

Product datasheet for **TA590208**

LIM kinase 2 (LIMK2) Rabbit Polyclonal Antibody

Product data:

Product Type:	Primary Antibodies
Applications:	ELISA, IF, IHC, WB
Recommended Dilution:	WB 1:20000, IHC 1:150, ELISA 1:100-1:2000
Reactivity:	Human
Host:	Rabbit
Isotype:	IgG
Clonality:	Polyclonal
Immunogen:	DNA immunization. This antibody is specific for the Middle Region of the target protein.
Formulation:	20 mM Potassium Phosphate, 150 mM Sodium Chloride, pH 7.0
Concentration:	1.17518 mg/ml
Purification:	Purified from mouse ascites fluids or tissue culture supernatant by affinity chromatography (protein A/G)
Conjugation:	Unconjugated
Storage:	Store at -20°C as received.
Stability:	Stable for 12 months from date of receipt.
Gene Name:	LIM domain kinase 2
Database Link:	NP_005560 Entrez Gene 3985 Human P53671
Background:	LIM-kinase 2 (LIMK2), a 75-kDa member of the LIM kinase family, is responsible for regulating actin polymerization via phosphorylation and inactivation of the actin depolymerizing factors ADF/cofilin (1). LIMK2 protein is found in the cytoplasm during interphase, redistributed to the mitotic spindle and then to the spindle midzone during anaphase to telophase (2). It has been shown that ROCK, a downstream protein kinase of Rho, activates LIMK2 by directly phosphorylates threonine 505 residue. Since activity of LIMK2 is cell cycle dependant, LIMK2 activity is markedly increased when HeLa cells are synchronized at mitosis with nocodazole treatment (3).



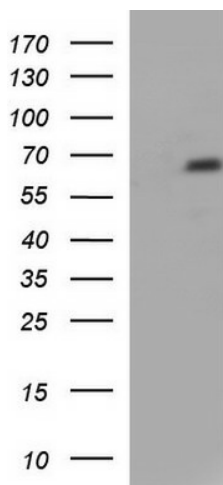
[View online »](#)

Note: This antibody was generated by SDIX's Genomic Antibody Technology® (GAT). [Learn about GAT](#)

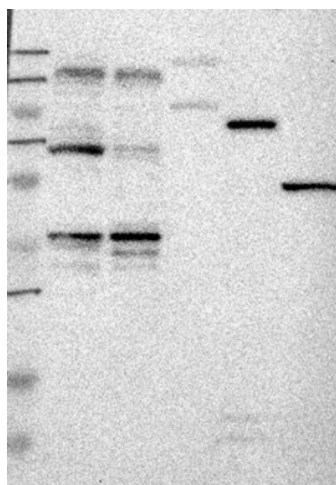
Protein Families: Druggable Genome, Protein Kinase

Protein Pathways: Axon guidance, Fc gamma R-mediated phagocytosis, Regulation of actin cytoskeleton

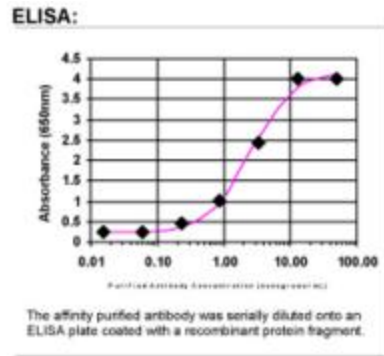
Product images:



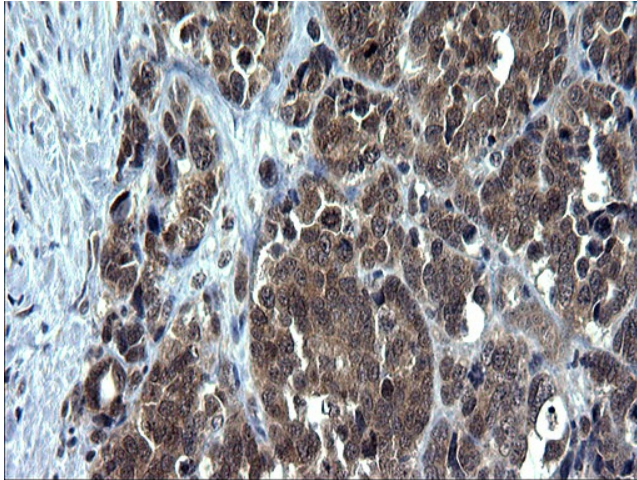
HEK293T cells were transfected with the pCMV6-ENTRY control (Cat# [PS100001], Left lane) or pCMV6-ENTRY LIMK2 (Cat# [RC217705], Right lane) cDNA for 48 hrs and lysed. Equivalent amounts of cell lysates (5 ug per lane) were separated by SDS-PAGE and immunoblotted with anti-LIMK2(Cat# TA590208).



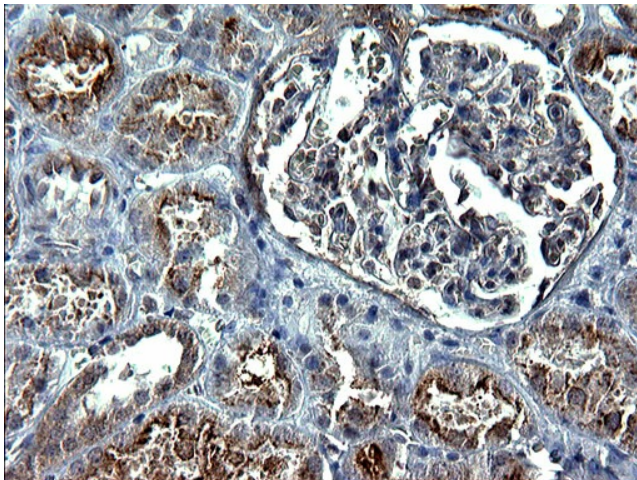
Lane 1: Marker [kDa] 250, 130, 95, 72, 55, 36, 28, 17, 11; Lane 2: RT-4; Lane 3: U-251 MG; Lane 4: Human Plasma; Lane 5: Liver; Lane 6: Tonsil This validation was performed by Protein Atlas and the presentation of data is for informational purposes only.



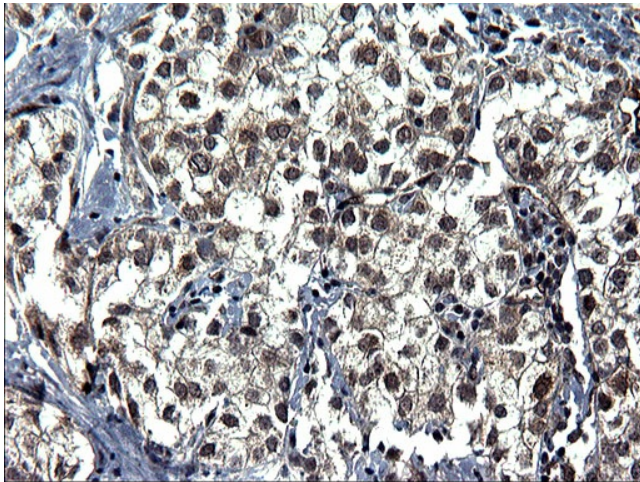
ELISA: LIM kinase 2 Antibody



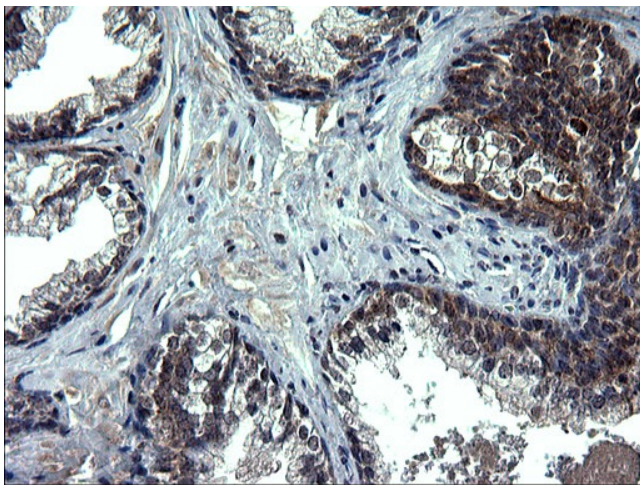
Immunohistochemical staining of paraffin-embedded Adenocarcinoma of Human colon tissue using anti-LIMK2 rabbit polyclonal antibody. (TA590208)



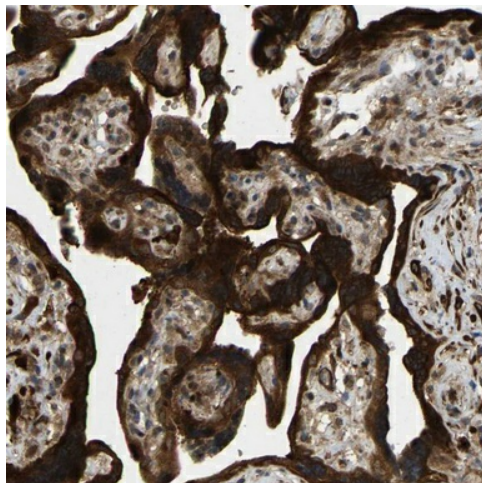
Immunohistochemical staining of paraffin-embedded Human Kidney tissue using anti-LIMK2 rabbit polyclonal antibody. (TA590208)



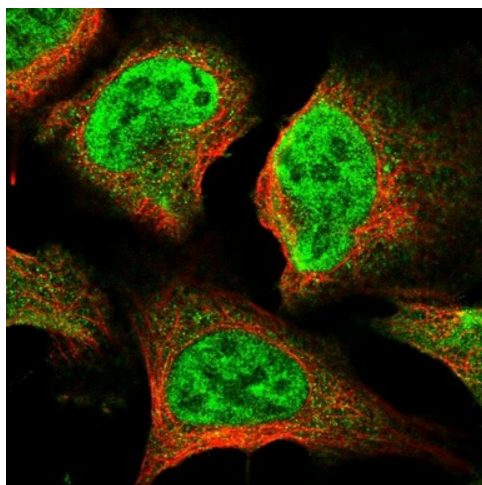
Immunohistochemical staining of paraffin-embedded Carcinoma of Human liver tissue using anti-LIMK2 rabbit polyclonal antibody. (TA590208)



Immunohistochemical staining of paraffin-embedded Human prostate tissue using anti-LIMK2 rabbit polyclonal antibody. (TA590208)



Immunohistochemical staining of human placenta shows strong cytoplasmic positivity in trophoblastic cells. This validation was performed by Protein Atlas and the presentation of data is for informational purposes only.



Immunofluorescent staining of human cell line U-2 OS shows positivity in nucleus but not nucleoli & cytoplasm. This validation was performed by Protein Atlas and the presentation of data is for informational purposes only.