

## Product datasheet for **TA590206**

### YES1 Rabbit Polyclonal Antibody

#### Product data:

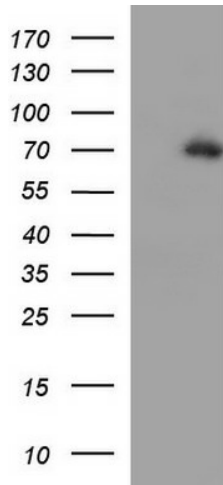
Product Type:	Primary Antibodies
Applications:	ELISA, IHC, WB
Recommended Dilution:	WB 1:20000, IHC 1:150, ELISA 1:100-1:2000
Reactivity:	Human
Host:	Rabbit
Isotype:	IgG
Clonality:	Polyclonal
Immunogen:	DNA immunization. This antibody is specific for the N Terminus Region of the target protein.
Formulation:	20 mM Potassium Phosphate, 150 mM Sodium Chloride, pH 7.0
Concentration:	1.07mg/ml
Purification:	Purified from mouse ascites fluids or tissue culture supernatant by affinity chromatography (protein A/G)
Conjugation:	Unconjugated
Storage:	Store at -20°C as received.
Stability:	Stable for 12 months from date of receipt.
Gene Name:	YES proto-oncogene 1, Src family tyrosine kinase
Database Link:	<a href="#">NP_005424</a> <a href="#">Entrez Gene 7525 Human P07947</a>
Background:	This gene is the cellular homolog of the Yamaguchi sarcoma virus oncogene. The encoded protein has tyrosine kinase activity and belongs to the src family of proteins. This gene lies in close proximity to thymidylate synthase gene on chromosome 18, and a corresponding pseudogene has been found on chromosome 22.
Synonyms:	c-yes; HsT441; P61-YES; Yes
Note:	This antibody was generated by SDIX's Genomic Antibody Technology® (GAT). <a href="#">Learn about GAT</a>
Protein Families:	Druggable Genome, Protein Kinase



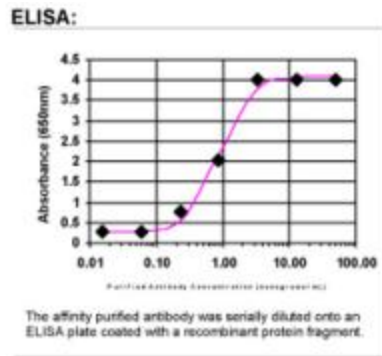
[View online »](#)

Protein Pathways: Adherens junction, Tight junction

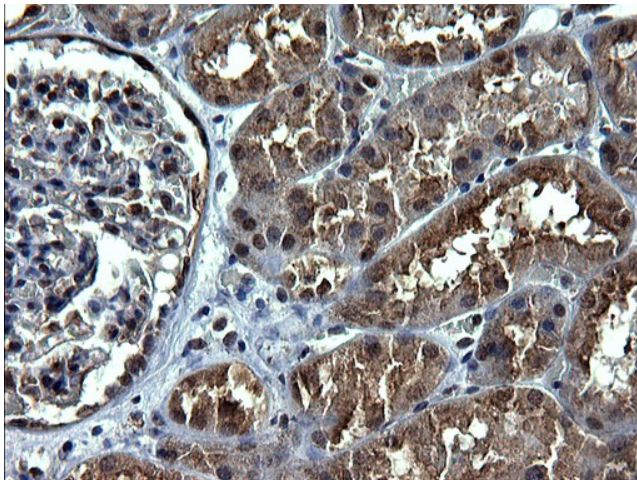
**Product images:**



HEK293T cells were transfected with the pCMV6-ENTRY control (Cat# [PS100001], Left lane) or pCMV6-ENTRY YES1 (Cat# [RC208432], Right lane) cDNA for 48 hrs and lysed. Equivalent amounts of cell lysates (5 ug per lane) were separated by SDS-PAGE and immunoblotted with anti-YES1 (Cat# TA590206). Positive lysates [LY401664] (100ug) and [LC401664] (20ug) can be purchased separately from OriGene.



ELISA: Yes1 Antibody



Immunohistochemical staining of paraffin-embedded Human Kidney tissue using anti-YES1 rabbit polyclonal antibody. (TA590206). Heat-induced epitope retrieval by EDTA solution buffer pH 8.0 at 120°C for 3 min.