

Product datasheet for **TA590205**

XRCC3 Rabbit Polyclonal Antibody

Product data:

Product Type:	Primary Antibodies
Applications:	ELISA
Recommended Dilution:	WB: 1:5000-1:20000; ELISA: 1:100-1:2000; IHC: 1:10-1:2000; IHC-P 1:250-1:2000
Reactivity:	Human
Host:	Rabbit
Isotype:	IgG
Clonality:	Polyclonal
Immunogen:	DNA immunization. This antibody is specific for the C Terminus Region of the target protein.
Formulation:	20 mM Potassium Phosphate, 150 mM Sodium Chloride, pH 7.0
Concentration:	1.04mg/ml
Purification:	Purified from mouse ascites fluids or tissue culture supernatant by affinity chromatography (protein A/G)
Conjugation:	Unconjugated
Storage:	Store at -20°C as received.
Stability:	Stable for 12 months from date of receipt.
Gene Name:	X-ray repair cross complementing 3
Database Link:	NP_005423 Entrez Gene 7517 Human O43542
Background:	Five human RAD51 homologs have been identified: XRCC2, XRCC3, RAD51B, RAD51C, and RAD51D. Each of these homologs interacts with one or more of the others, with all of the proteins involved in one complex or multiple smaller complexes. XRCC3 (x-ray cross complementing) was first identified as a human gene complementing the DNA damage sensitivity, chromosomal instability and impaired growth of the mutant hamster cell line irs1SF. This fact coupled with XRCC3 being a member of the RAD51 gene family have implied a role in the repair of DNA damage by homologous recombination.
Synonyms:	CMM6



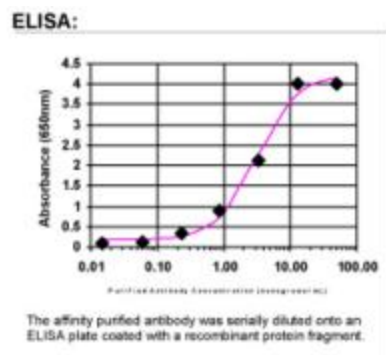
[View online »](#)

Note: This antibody was generated by SDIX's Genomic Antibody Technology® (GAT). [Learn about GAT](#)

Protein Families: Druggable Genome

Protein Pathways: Homologous recombination

Product images:



ELISA: XRCC3 Antibody