

## Product datasheet for **TA590204**

### PKC epsilon (PRKCE) Rabbit Polyclonal Antibody

#### Product data:

Product Type:	Primary Antibodies
Applications:	ELISA, WB
Recommended Dilution:	WB 1:20000, ELISA 1:100-1:2000
Reactivity:	Human
Host:	Rabbit
Isotype:	IgG
Clonality:	Polyclonal
Immunogen:	DNA immunization. This antibody is specific for the Middle Region of the target protein.
Formulation:	20 mM Potassium Phosphate, 150 mM Sodium Chloride, pH 7.0
Concentration:	1.16934 mg/ml
Purification:	Purified from mouse ascites fluids or tissue culture supernatant by affinity chromatography (protein A/G)
Conjugation:	Unconjugated
Storage:	Store at -20°C as received.
Stability:	Stable for 12 months from date of receipt.
Gene Name:	protein kinase C epsilon
Database Link:	<a href="#">NP_005391</a> <a href="#">Entrez Gene 5581 Human</a> <a href="#">Q02156</a>



[View online »](#)

**Background:**

The allergic reaction is mediated through the IgE high affinity receptor (FcεRI). When a multivalent antigen is presented, a redistribution of the monomeric IgE FcεRI receptor complexes cause the degranulation of mast cells and basophils, resulting in the subsequent release of factors responsible for the allergic reaction. The FcεRI receptor is a tetrameric complex, consisting of a α-chain, β-chain and a dimeric γ-chain. While the α-chain is primarily involved with the binding of IgE, the signal is transferred through the γ subunit, which contains the immunoreceptor tyrosine activation motifs (ITAM) critical for initiating receptor mediated signal transduction through the Syk and Lyn tyrosine kinases. The FcεRI receptor is able to engage and disengage the IgE, providing a versatile model for studying the function of kinase coupled receptors.

**Synonyms:**

nPKC-epsilon; PKCE

**Note:**

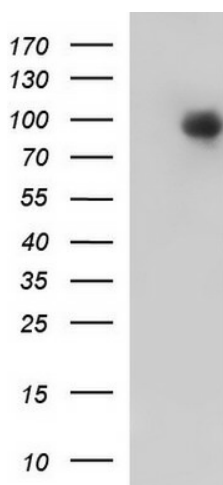
This antibody was generated by SDIX's Genomic Antibody Technology® (GAT). [Learn about GAT](#)

**Protein Families:**

Druggable Genome, Protein Kinase

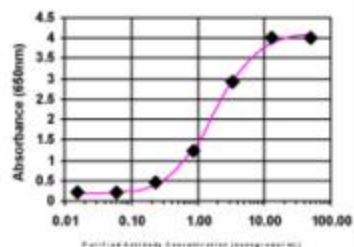
**Protein Pathways:**

Fc epsilon RI signaling pathway, Fc gamma R-mediated phagocytosis, Tight junction, Type II diabetes mellitus, Vascular smooth muscle contraction

**Product images:**


HEK293T cells were transfected with the pCMV6-ENTRY control (Left lane) or pCMV6-ENTRY PRKCE ([RC217702], Right lane) cDNA for 48 hrs and lysed. Equivalent amounts of cell lysates (5 ug per lane) were separated by SDS-PAGE and immunoblotted with anti-PRKCE. Positive lysates [LY401658] (100ug) and [LC401658] (20ug) can be purchased separately from OriGene.

ELISA:



The affinity purified antibody was serially diluted onto an ELISA plate coated with a recombinant protein fragment.

ELISA: PKC epsilon Antibody