

Product datasheet for **TA590203**

c-Myb (MYB) Rabbit Polyclonal Antibody

Product data:

Product Type:	Primary Antibodies
Applications:	ELISA, WB
Recommended Dilution:	WB: 1:5000-1:20000; ELISA: 1:100-1:2000; IHC: 1:10-1:2000; IHC-P 1:10-1:2000
Reactivity:	Human
Host:	Rabbit
Isotype:	IgG
Clonality:	Polyclonal
Immunogen:	DNA immunization. This antibody is specific for the Middle Region of the target protein.
Formulation:	20 mM Potassium Phosphate, 150 mM Sodium Chloride, pH 7.0
Concentration:	1.17mg/ml
Purification:	Purified from mouse ascites fluids or tissue culture supernatant by affinity chromatography (protein A/G)
Conjugation:	Unconjugated
Storage:	Store at -20°C as received.
Stability:	Stable for 12 months from date of receipt.
Gene Name:	MYB proto-oncogene, transcription factor
Database Link:	NP_005366 Entrez Gene 4602 Human P10242
Background:	The c-Myb proto-oncogene is a 75 kDa protein involved in growth regulation and differentiation in many different cell types but it is predominantly expressed in immature hemopoietic cells where it plays an important role in cell proliferation. c-Myb activity is directly regulated by cyclin D1 and CDKs and it is believed that c-Myb activity is regulated during the cell cycle in hematopoietic cells (2). Disrupting c-myb function might, therefore, prove an effective therapeutic strategy for controlling leukemic cell growth (3). c-Myb binds to promoter sequences of genes such as c-Myc or Bcl-2 that are expressed in cutaneous T-cell lymphoma.
Synonyms:	c-myb; c-myb_CDS; Cmyb; efg



[View online »](#)

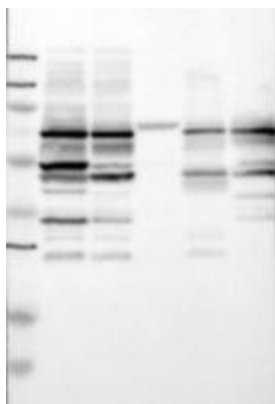
Note: This antibody was generated by SDIX's Genomic Antibody Technology® (GAT). [Learn about GAT](#)

Protein Families: Druggable Genome, ES Cell Differentiation/IPS, Stem cell - Pluripotency, Transcription Factors

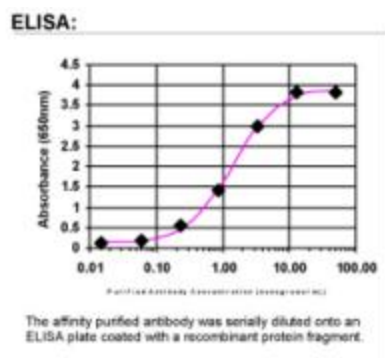
Product images:



Western Blot: c-Myb Antibody - Western Blot was performed using affinity purified SEQer MYB antibody. The lanes contain 5-30ug of a whole cell extract. Final concentration of antibodies = 0.1ug/ml (1:10,000 dilution).



Western Blot: c-Myb Antibody - Samples: Lane 1: Marker: 250, 130, 95, 72, 55, 36, 28, 17, 11 / Lane 2: RT-4 / Lane 3: U-251MG sp / Lane 4: Human Plasma / Lane 5: Liver / Lane 6: Tonsil; Target weight: 85, 82, 76, 72, 41, 31 (splice variants)



ELISA: c-Myb Antibody - Affinity Purified