

## Product datasheet for **TA590202**

### GNB2 Rabbit Polyclonal Antibody

#### Product data:

Product Type:	Primary Antibodies
Applications:	ELISA, IHC, WB
Recommended Dilution:	WB 1:20000, IHC 1:150, ELISA 1:100-1:2000
Reactivity:	Human
Host:	Rabbit
Isotype:	IgG
Clonality:	Polyclonal
Immunogen:	DNA immunization. This antibody is specific for the N Terminus Region of the target protein.
Formulation:	20 mM Potassium Phosphate, 150 mM Sodium Chloride, pH 7.0
Concentration:	0.99197 mg/ml
Purification:	Purified from mouse ascites fluids or tissue culture supernatant by affinity chromatography (protein A/G)
Conjugation:	Unconjugated
Storage:	Store at -20°C as received.
Stability:	Stable for 12 months from date of receipt.
Gene Name:	G protein subunit beta 2
Database Link:	<a href="#">NP_005264</a> <a href="#">Entrez Gene 2783 Human P62879</a>
Background:	Heterotrimeric guanine nucleotide-binding proteins (G proteins), which integrate signals between receptors and effector proteins, are composed of an alpha, a beta, and a gamma subunit. These subunits are encoded by families of related genes. This gene encodes a beta subunit. Beta subunits are important regulators of alpha subunits, as well as of certain signal transduction receptors and effectors. This gene contains a trinucleotide (CCG) repeat length polymorphism in its 5' UTR.
Synonyms:	beta-2 subunit; G(S); G(T) beta subunit 2; G protein; guanine nucleotide-binding protein; guanine nucleotide-binding protein G(I); OTTHUMP00000174601; OTTHUMP00000174602; signal-transducing guanine nucleotide-binding regulatory protein beta

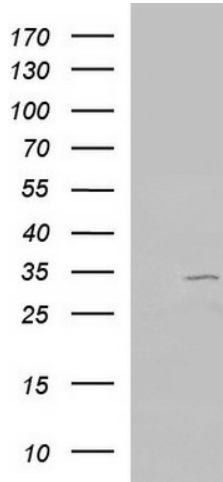


[View online »](#)

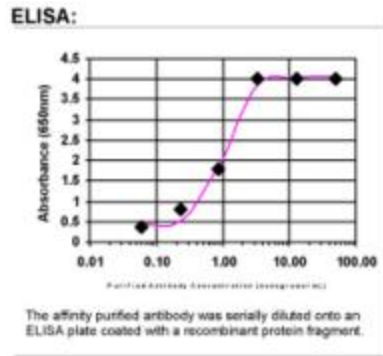
**Note:** This antibody was generated by SDIX's Genomic Antibody Technology® (GAT). [Learn about GAT](#)

**Protein Pathways:** Chemokine signaling pathway

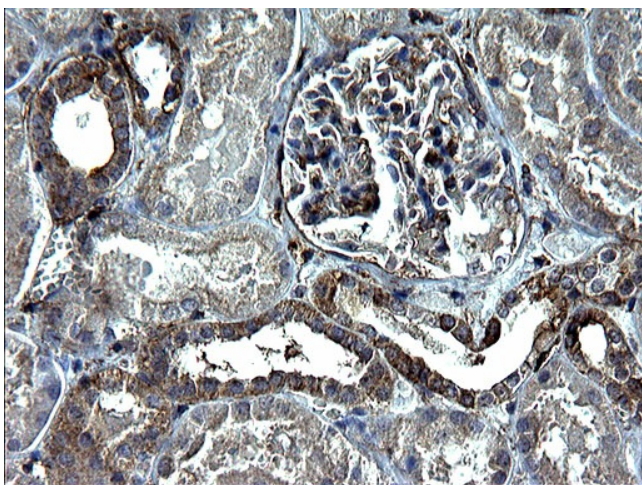
**Product images:**



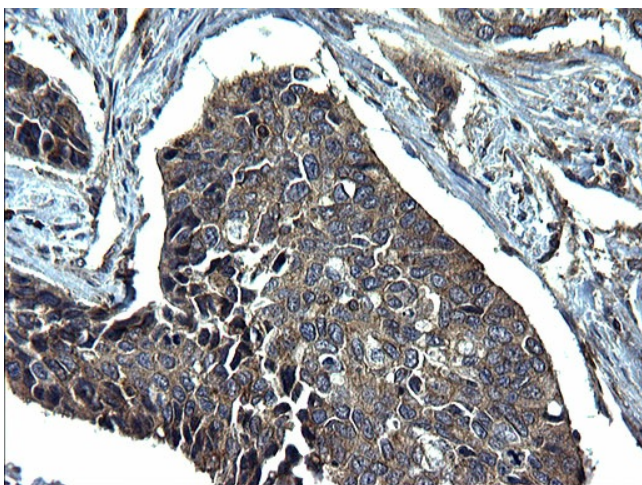
HEK293T cells were transfected with the pCMV6-ENTRY control (Cat# [PS100001], Left lane) or pCMV6-ENTRY GNB2 (Cat# [RC204178], Right lane) cDNA for 48 hrs and lysed. Equivalent amounts of cell lysates (5 ug per lane) were separated by SDS-PAGE and immunoblotted with anti-GNB2 (Cat# TA590202). Positive lysates [LY401621] (100ug) and [LC401621] (20ug) can be purchased separately from OriGene.



ELISA: GNB2 Antibody



Immunohistochemical staining of paraffin-embedded Human Kidney tissue using anti-GNB2 rabbit polyclonal antibody. (TA590202)



Immunohistochemical staining of paraffin-embedded Carcinoma of Human bladder tissue using anti-GNB2 rabbit polyclonal antibody. (TA590202)