

## Product datasheet for **TA590201**

### c Fos (FOS) Rabbit Polyclonal Antibody

#### Product data:

|                       |  |
|-----------------------|--|
| Product Type:         | Primary Antibodies   |
| Applications:         | ELISA, IHC, WB   |
| Recommended Dilution: | WB 1:5000~20000, IHC 1:150, ELISA 1:100-1:2000   |
| Reactivity:           | Human, Dog, Rat, Monkey, Mouse   |
| Host:                 | Rabbit   |
| Isotype:              | IgG  |
| Clonality:            | Polyclonal   |
| Immunogen:            | DNA immunization. This antibody is specific for the N Terminus Region of the target protein.   |
| Formulation:          | 20 mM Potassium Phosphate, 150 mM Sodium Chloride, pH 7.0  |
| Concentration:        | 1.3mg/ml   |
| Purification:         | Purified from mouse ascites fluids or tissue culture supernatant by affinity chromatography (protein A/G)  |
| Conjugation:          | Unconjugated   |
| Storage:              | Store at -20°C as received.  |
| Stability:            | Stable for 12 months from date of receipt.   |
| Gene Name:            | Fos proto-oncogene, AP-1 transcription factor subunit  |
| Database Link:        | <a href="#">NP_005243</a><br><a href="#">Entrez Gene 14281 Mouse</a> <a href="#">Entrez Gene 314322 Rat</a> <a href="#">Entrez Gene 490792 Dog</a> <a href="#">Entrez Gene 702077 Monkey</a> <a href="#">Entrez Gene 2353 Human</a><br><a href="#">P01100</a>  |
| Background:           | The Fos gene family consists of 4 members: Fos, FosB, FosL1, and FosL2. These genes encode leucine zipper proteins that can dimerize with proteins of the JUN family, thereby forming the transcription factor complex AP1. As such, the Fos proteins have been implicated as regulators of cell proliferation, differentiation, and transformation. In some cases, expression of the Fos gene has also been associated with apoptotic cell death. |
| Synonyms:             | AP-1; C-FOS; p55   |
| Note:                 | This antibody was generated by SDIX's Genomic Antibody Technology® (GAT). <a href="#">Learn about GAT</a>  |

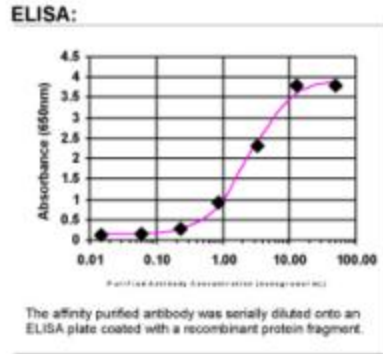


[View online »](#)

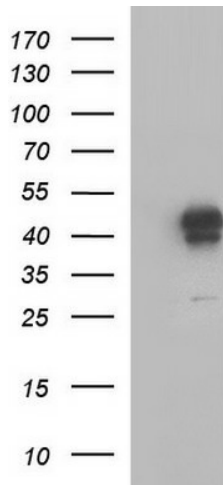
**Protein Families:** Druggable Genome, Transcription Factors

**Protein Pathways:** B cell receptor signaling pathway, Colorectal cancer, MAPK signaling pathway, Pathways in cancer, T cell receptor signaling pathway, Toll-like receptor signaling pathway

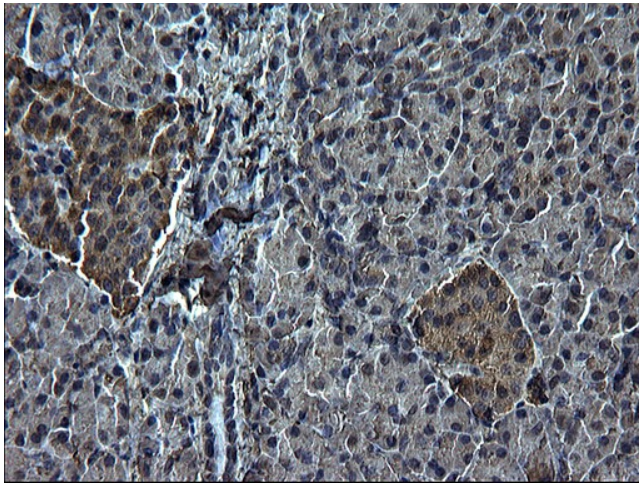
**Product images:**



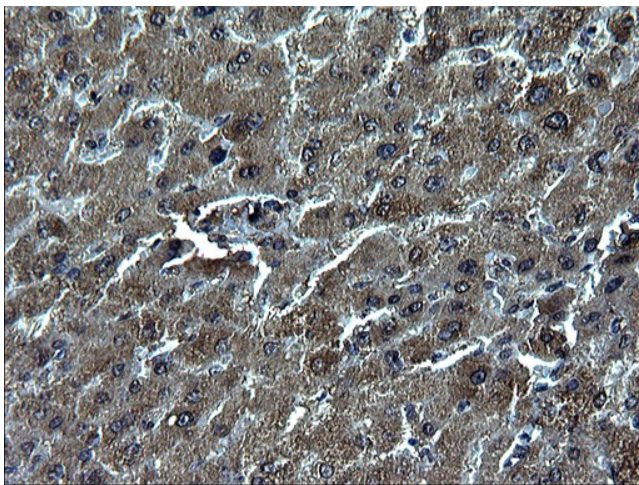
ELISA: c-Fos Antibody



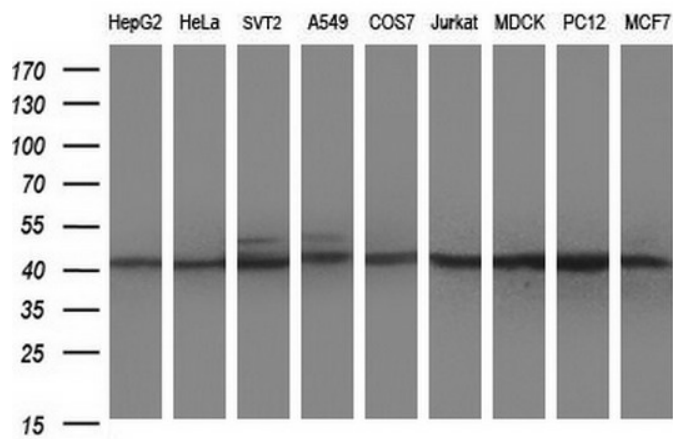
HEK293T cells were transfected with the pCMV6-ENTRY control (Left lane) or pCMV6-ENTRY FOS ([RC202597], Right lane) cDNA for 48 hrs and lysed. Equivalent amounts of cell lysates (5 ug per lane) were separated by SDS-PAGE and immunoblotted with anti-FOS. Positive lysates [LY401614] (100ug) and [LC401614] (20ug) can be purchased separately from OriGene.



Immunohistochemical staining of paraffin-embedded Human pancreas tissue using anti-FOS Rabbit Polyclonal antibody. (TA590201)



Immunohistochemical staining of paraffin-embedded Human liver tissue using anti-FOS Rabbit Polyclonal antibody. (TA590201)



Western blot analysis of extracts (35ug) from 9 different cell lines by using anti-FOS polyclonal antibody (HepG2: human; HeLa: human; SVT2: mouse; A549: human; COS7: monkey; Jurkat: human; MDCK: canine; PC12: rat; MCF7: human).