

Product datasheet for **TA590190**

BAP1 Rabbit Polyclonal Antibody

Product data:

Product Type:	Primary Antibodies
Applications:	ELISA
Recommended Dilution:	WB: 1:5000-1:20000; ELISA: 1:100-1:2000
Reactivity:	Human
Host:	Rabbit
Isotype:	IgG
Clonality:	Polyclonal
Immunogen:	DNA immunization. This antibody is specific for the Middle Region of the target protein.
Formulation:	20 mM Potassium Phosphate, 150 mM Sodium Chloride, pH 7.0
Concentration:	0.70511 mg/ml
Purification:	Purified from mouse ascites fluids or tissue culture supernatant by affinity chromatography (protein A/G)
Conjugation:	Unconjugated
Storage:	Store at -20°C as received.
Stability:	Stable for 12 months from date of receipt.
Gene Name:	BRCA1 associated protein 1
Database Link:	NP_004647 Entrez Gene 8314 Human Q92560



[View online »](#)

Background:

Mutations within the BRCA1 gene, localized to chromosome 17q, are believed to account for approximately 45% of families with increased incidence of both early-onset breast cancer and ovarian cancer. The BRCA1 gene is expressed in numerous tissues, including breast and ovary, and encodes a predicted protein of 1863 amino acids. This protein contains a RING domain near the N-terminus and appears to encode a tumor suppressor. BARD1 (BRCA1-associated RING domain protein 1) and BAP1 (BRCA1-associated protein 1) have both been shown to bind to the N-terminus of BRCA1 and are potential mediators of tumor suppression. BARD1 contains an N-terminal RING domain and three tandem ankyrin repeats. The C-terminus of BARD1 contains a region with sequence homology to BRCA1, termed the BRCT domain. BAP1 is a ubiquitin hydrolase and has been shown to enhance BRCA1-mediated cell growth suppression.

Synonyms:

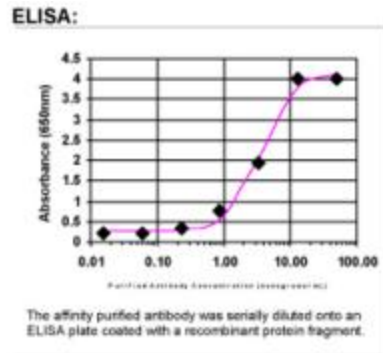
hucep-6; HUCEP-13; UCHL2

Note:

This antibody was generated by SDIX's Genomic Antibody Technology® (GAT). [Learn about GAT](#)

Protein Families:

Druggable Genome, Protease

Product images:


ELISA: BAP1 Antibody