

Product datasheet for **TA590189**

CDK2AP1 Rabbit Polyclonal Antibody

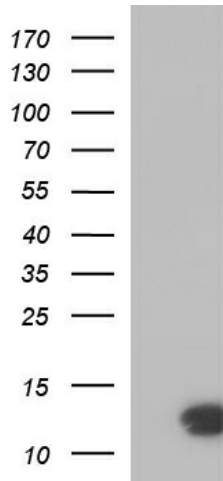
Product data:

Product Type:	Primary Antibodies
Applications:	ELISA, IHC, WB
Recommended Dilution:	WB 1:20000, ELISA 1:100-1:2000
Reactivity:	Human
Host:	Rabbit
Isotype:	IgG
Clonality:	Polyclonal
Immunogen:	DNA immunization. This antibody is specific for the entire range of the target protein.
Formulation:	20 mM Potassium Phosphate, 150 mM Sodium Chloride, pH 7.0
Concentration:	0.95109 mg/ml
Purification:	Purified from mouse ascites fluids or tissue culture supernatant by affinity chromatography (protein A/G)
Conjugation:	Unconjugated
Storage:	Store at -20°C as received.
Stability:	Stable for 12 months from date of receipt.
Gene Name:	cyclin dependent kinase 2 associated protein 1
Database Link:	NP_004633 Entrez Gene 8099 Human Q14519
Background:	The protein encoded by this gene is a specific CDK2-associated protein, which is thought to negatively regulate CDK2 activity by sequestering monomeric CDK2, and targeting CDK2 for proteolysis. This protein was found to also interact with DNA polymerase alpha/primase and mediate the phosphorylation of the large p180 subunit, which suggested the regulatory role in DNA replication during S phase of the cell cycle. A similar gene in hamster was isolated from, and functions as a growth suppressor of normal keratinocytes.
Synonyms:	doc-1; DOC1; DORC1; p12DOC-1; ST19
Note:	This antibody was generated by SDIX's Genomic Antibody Technology® (GAT). Learn about GAT

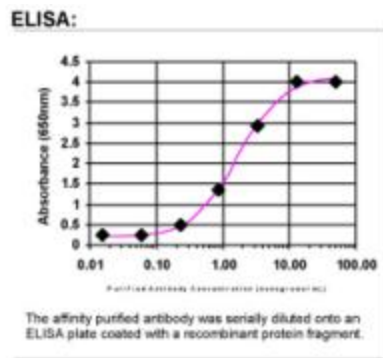


[View online »](#)

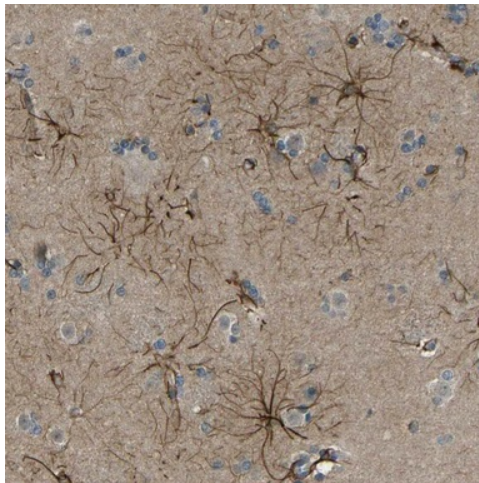
Product images:



HEK293T cells were transfected with the pCMV6-ENTRY control (Cat# [PS100001], Left lane) or pCMV6-ENTRY CDK2AP1 (Cat# [RC204442], Right lane) cDNA for 48 hrs and lysed. Equivalent amounts of cell lysates (5 ug per lane) were separated by SDS-PAGE and immunoblotted with anti-CDK2(Cat# TA590189). Positive lysates [LY401472] (100ug) and [LC401472] (20ug) can be purchased separately from OriGene.



ELISA: CDK2AP1 Antibody



Immunohistochemical staining of human lateral ventricle shows strong positivity in Astrocytes. This validation was performed by Protein Atlas and the presentation of data is for informational purposes only.