

Product datasheet for **TA590184**

IL16 Rabbit Polyclonal Antibody

Product data:

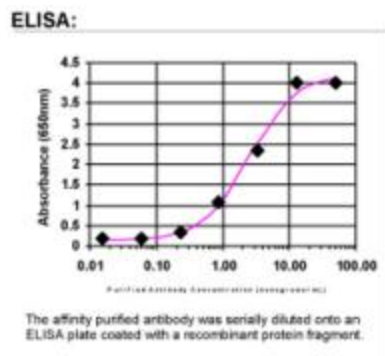
Product Type:	Primary Antibodies
Applications:	ELISA
Recommended Dilution:	ELISA: 1:100-1:2000
Reactivity:	Human
Host:	Rabbit
Isotype:	IgG
Clonality:	Polyclonal
Immunogen:	DNA immunization. This antibody is specific for the N Terminus Region of the target protein.
Formulation:	20 mM Potassium Phosphate, 150 mM Sodium Chloride, pH 7.0
Concentration:	1.0073 mg/ml
Purification:	Purified from mouse ascites fluids or tissue culture supernatant by affinity chromatography (protein A/G)
Conjugation:	Unconjugated
Storage:	Store at -20°C as received.
Stability:	Stable for 12 months from date of receipt.
Gene Name:	interleukin 16
Database Link:	NP_004504 Entrez Gene 3603 Human Q14005
Background:	Interleukin-16, also known as lymphocyte chemoattractant factor (LCF), is a chemotactic cytokine that stimulates a migratory response in CD4+ lymphocytes, monocytes, and eosinophils through binding to the CD4 receptor . IL-16 induces human T-lymphocyte expression of interleukin 2 receptor and upregulates major histocompatibility complex molecules on resting human T lymphocyte. It is able to render CD4+ T cells unresponsive to TCR/CD3 stimuli. Moreover, IL-16 inhibits the replication of T cell and monocyte tropic HIV strains in vitro.
Synonyms:	LCF; NIL16; prIL-16; PRIL16


[View online »](#)

Note: This antibody was generated by SDIX's Genomic Antibody Technology ® (GAT). [Learn about GAT](#)

Protein Families: Druggable Genome, Secreted Protein

Product images:



ELISA: IL16 Antibody