

## Product datasheet for **TA590178**

### E Cadherin (CDH1) Rabbit Polyclonal Antibody

#### Product data:

Product Type:	Primary Antibodies
Applications:	ELISA
Recommended Dilution:	WB: 1:5000-1:20000; ELISA: 1:100-1:2000
Reactivity:	Human
Host:	Rabbit
Isotype:	IgG
Clonality:	Polyclonal
Immunogen:	DNA immunization. This antibody is specific for the N Terminus Region of the target protein.
Formulation:	20 mM Potassium Phosphate, 150 mM Sodium Chloride, pH 7.0
Concentration:	0.68mg/ml
Purification:	Purified from mouse ascites fluids or tissue culture supernatant by affinity chromatography (protein A/G)
Conjugation:	Unconjugated
Storage:	Store at -20°C as received.
Stability:	Stable for 12 months from date of receipt.
Gene Name:	cadherin 1
Database Link:	<a href="#">NP_004351</a> <a href="#">Entrez Gene 999 Human P12830</a>
Background:	E-Cadherin, a member of the cadherin superfamily, is implicated as a key player in different cellular processes including development, morphology, polarity, migration and tissue integrity (1-2). E-cadherin is a glycoprotein with an extracellular domain that interacts with other E-cadherin molecules on adjacent cells, thereby establishing adhesion between epithelial cells. Established as a tumor and metastasis suppressor, E-cadherin expression is frequently down-regulated or extinguished in malignancy which strongly correlates with poor prognosis (3-4). Mutations in E-cadherin are found in gastric, breast, colorectal, thyroid and ovarian cancer (5).
Synonyms:	Arc-1; CD324; CDHE; ECAD; LCAM; UVO



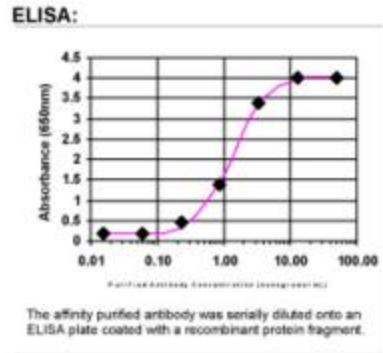
[View online »](#)

**Note:** This antibody was generated by SDIX's Genomic Antibody Technology® (GAT). [Learn about GAT](#)

**Protein Families:** Druggable Genome, ES Cell Differentiation/IPS, Transmembrane

**Protein Pathways:** Adherens junction, Bladder cancer, Cell adhesion molecules (CAMs), Endometrial cancer, Melanoma, Pathogenic Escherichia coli infection, Pathways in cancer, Thyroid cancer

### Product images:



ELISA: E Cadherin Antibody