

## Product datasheet for **TA590175**

### **BST2 Rabbit Polyclonal Antibody**

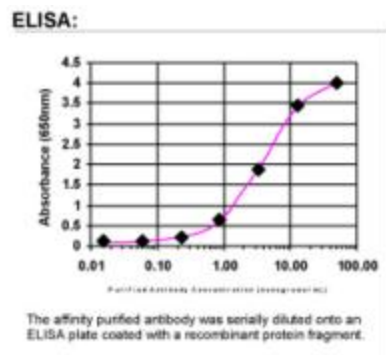
#### **Product data:**

<b>Product Type:</b>	Primary Antibodies
<b>Applications:</b>	ELISA
<b>Recommended Dilution:</b>	WB: 1:5000-1:20000; ELISA: 1:100-1:2000
<b>Reactivity:</b>	Human
<b>Host:</b>	Rabbit
<b>Isotype:</b>	IgG
<b>Clonality:</b>	Polyclonal
<b>Immunogen:</b>	DNA immunization. This antibody is specific for the entire range of the target protein.
<b>Formulation:</b>	20 mM Potassium Phosphate, 150 mM Sodium Chloride, pH 7.0
<b>Concentration:</b>	0.72993 mg/ml
<b>Purification:</b>	Purified from mouse ascites fluids or tissue culture supernatant by affinity chromatography (protein A/G)
<b>Conjugation:</b>	Unconjugated
<b>Storage:</b>	Store at -20°C as received.
<b>Stability:</b>	Stable for 12 months from date of receipt.
<b>Gene Name:</b>	bone marrow stromal cell antigen 2
<b>Database Link:</b>	<a href="#">NP_004326</a> <a href="#">Entrez Gene 684 Human</a> <a href="#">Q10589</a>
<b>Background:</b>	Bone marrow stromal cells are involved in the growth and development of B-cells. The specific function of the protein encoded by the bone marrow stromal cell antigen 2 is undetermined; however, this protein may play a role in pre-B-cell growth and in rheumatoid arthritis. [provided by RefSeq]
<b>Synonyms:</b>	CD317; HM1.24; TETHERIN
<b>Note:</b>	This antibody was generated by SDIX's Genomic Antibody Technology® (GAT). <a href="#">Learn about GAT</a>
<b>Protein Families:</b>	Druggable Genome, ES Cell Differentiation/IPS, Transmembrane



[View online »](#)

## Product images:



ELISA: BST2 Antibody