

Product datasheet for **TA590166**

SOCS2 Rabbit Polyclonal Antibody

Product data:

Product Type:	Primary Antibodies
Applications:	ELISA
Recommended Dilution:	ELISA: 1:100-1:2000
Reactivity:	Human
Host:	Rabbit
Isotype:	IgG
Clonality:	Polyclonal
Immunogen:	DNA immunization. This antibody is specific for the N Terminus Region of the target protein.
Formulation:	20 mM Potassium Phosphate, 150 mM Sodium Chloride, pH 7.0
Concentration:	1.00547 mg/ml
Purification:	Purified from mouse ascites fluids or tissue culture supernatant by affinity chromatography (protein A/G)
Conjugation:	Unconjugated
Storage:	Store at -20°C as received.
Stability:	Stable for 12 months from date of receipt.
Gene Name:	suppressor of cytokine signaling 2
Database Link:	NP_003868 Entrez Gene 8835 Human Q14508
Background:	The SOCS2 (suppressor of cytokine signaling-2) protein is a 23 kD cytoplasmic protein that contains a SOCS box and an SH2 domain. SOCS2 has been shown to be involved in postnatal growth hormone signaling, IGF-1 signaling via the JAK/STAT pathway, and neuronal differentiation. SOCS2 is induced by erythropoietin, GM-CSF, IL-10, and IFN- gamma. SOCS2 has been shown to interact with the IGF-1 and growth hormone receptors. The Poly6153 antibody recognizes the N-terminal region of human SOCS2 and has been shown to be useful for Western blotting.
Synonyms:	CIS2; Cish2; SOCS-2; SSI-2; SSI2; STAT12



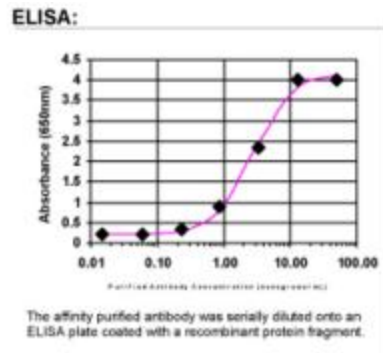
[View online »](#)

Note: This antibody was generated by SDIX's Genomic Antibody Technology® (GAT). [Learn about GAT](#)

Protein Families: Druggable Genome

Protein Pathways: Insulin signaling pathway, Jak-STAT signaling pathway, Type II diabetes mellitus

Product images:



ELISA: SOCS2 Antibody