

Product datasheet for **TA590160**

BCAR3 Rabbit Polyclonal Antibody

Product data:

Product Type:	Primary Antibodies
Applications:	ELISA
Recommended Dilution:	ELISA: 1:100-1:2000
Reactivity:	Human
Host:	Rabbit
Isotype:	IgG
Clonality:	Polyclonal
Immunogen:	DNA immunization. This antibody is specific for the Middle Region of the target protein.
Formulation:	20 mM Potassium Phosphate, 150 mM Sodium Chloride, pH 7.0
Concentration:	1.3mg/ml
Purification:	Purified from mouse ascites fluids or tissue culture supernatant by affinity chromatography (protein A/G)
Conjugation:	Unconjugated
Storage:	Store at -20°C as received.
Stability:	Stable for 12 months from date of receipt.
Gene Name:	BCAR3 adaptor protein, NSP family member
Database Link:	NP_003558 Entrez Gene 8412 Human O75815



[View online »](#)

Background:

In breast cancer, the antiestrogen tamoxifen has been prescribed for both primary treatment and the treatment of advanced metastatic disease. Although the drug induces remission in most patients with estrogen receptor-positive disease, all patients eventually develop resistance. van Agthoven et al. (1998) applied an insertional mutagenesis strategy to a breast cancer cell line. Infected cells were subjected to tamoxifen selection, and the resistant clones were screened for a common integration site linked with antiestrogen resistance. By screening a human testis cDNA library with the integration site-specific probe, they obtained a cDNA encoding BCAR3 (breast cancer antiestrogen resistance 3). The deduced 825 amino acid BCAR3 protein contains a putative Src homology 2 (SH2) domain and sequences homologous to yeast CDC48. Northern blot analysis detected abundant expression of a 3.4kb BCAR3 transcript in heart, placenta, skeletal muscle, spleen, prostate, testis, ovary, small intestine, colon, fetal kidney, and several cancer cell lines, but not in nonmalignant breast tissue; a 6kb BCAR3 transcript was also detected in skeletal muscle and heart.

Synonyms:

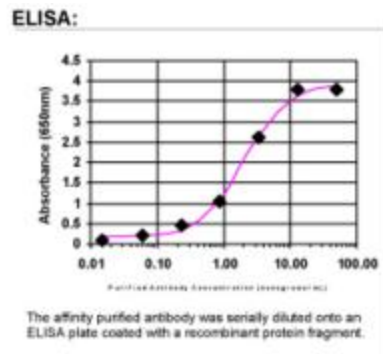
NSP2; SH2D3B

Note:

This antibody was generated by SDIX's Genomic Antibody Technology® (GAT). [Learn about GAT](#)

Protein Families:

Druggable Genome

Product images:

ELISA: BCAR3 Antibody