

Product datasheet for **TA590159**

Ezrin (EZR) Rabbit Polyclonal Antibody

Product data:

Product Type:	Primary Antibodies
Applications:	ELISA
Recommended Dilution:	WB: 1:5000-1:20000; ELISA: 1:100-1:2000; IHC: 1:10-1:2000; IHC-P 1:250-1:2000
Reactivity:	Human
Host:	Rabbit
Isotype:	IgG
Clonality:	Polyclonal
Immunogen:	DNA immunization. This antibody is specific for the Middle Region of the target protein.
Formulation:	20 mM Potassium Phosphate, 150 mM Sodium Chloride, pH 7.0
Concentration:	0.9mg/ml
Purification:	Purified from mouse ascites fluids or tissue culture supernatant by affinity chromatography (protein A/G)
Conjugation:	Unconjugated
Storage:	Store at -20°C as received.
Stability:	Stable for 12 months from date of receipt.
Gene Name:	ezrin
Database Link:	NP_003370 Entrez Gene 7430 Human P15311
Background:	Erzin, a member of the Ezrin, Radixin, Moesin (ERM) family, is a linker protein located between cell surface receptors, adhesion molecules, and actin cytoskeleton (1-2). Ezrin activity is regulated by intramolecular interactions between N- and C-terminal ERM association domains (3). Phosphorylation at threonine 567 is a critical regulator of Ezrin function allowing the active protein to link target molecules to the actin cytoskeleton (4). Ezrin tyrosine phosphorylation can also be induced by EGF, PDGF and HGF stimulation. Erzin interacts with PI3-K protein kinase A and Rho (5).
Synonyms:	CVIL; CVL; HEL-S-105; VIL2



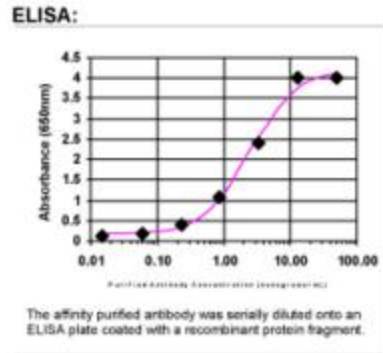
[View online »](#)

Note: This antibody was generated by SDIX's Genomic Antibody Technology® (GAT). [Learn about GAT](#)

Protein Families: Druggable Genome

Protein Pathways: Leukocyte transendothelial migration, Pathogenic Escherichia coli infection, Regulation of actin cytoskeleton

Product images:



ELISA: Ezrin Antibody