

Product datasheet for **TA590158**

WIPF1 Rabbit Polyclonal Antibody

Product data:

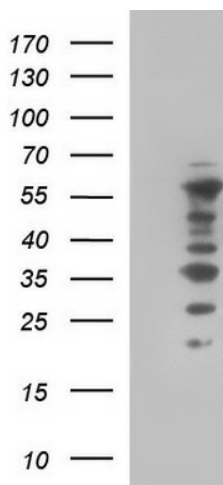
Product Type:	Primary Antibodies
Applications:	IHC, WB
Recommended Dilution:	WB 1:5000~20000, IHC 1:150, ELISA 1:100-1:2000
Reactivity:	Human, Mouse
Host:	Rabbit
Isotype:	IgG
Clonality:	Polyclonal
Immunogen:	DNA immunization. This antibody is specific for the Middle Region of the target protein.
Formulation:	20 mM Potassium Phosphate, 150 mM Sodium Chloride, pH 7.0
Concentration:	1.2mg/ml
Purification:	Purified from mouse ascites fluids or tissue culture supernatant by affinity chromatography (protein A/G)
Conjugation:	Unconjugated
Storage:	Store at -20°C as received.
Stability:	Stable for 12 months from date of receipt.
Gene Name:	WAS/WASL interacting protein family member 1
Database Link:	NP_003378 Entrez Gene 215280 Mouse Entrez Gene 7456 Human O43516
Background:	WIPF1 is involved in the organization of the actin cytoskeleton. The protein binds to a region of Wiskott-Aldrich syndrome protein that is frequently mutated in Wiskott-Aldrich syndrome, an X-linked recessive disorder. Impairment of the interaction between these WIPF1 and Wiskott-Aldrich syndrome protein may contribute to the disease. Two transcript variants encoding the same protein have been identified for this gene. WIPF1 binds to Wiskott-Aldrich syndrome protein, profilin and actin. It is involved with NCK1 and GRB2 in the recruitment and activation of N-WASP and may be involved in regulating the subcellular localization of N-WASP, resulting in the disassembly of stress fibers in filopodia formation.
Synonyms:	PRPL-2; WAS2; WASPIP; WIP



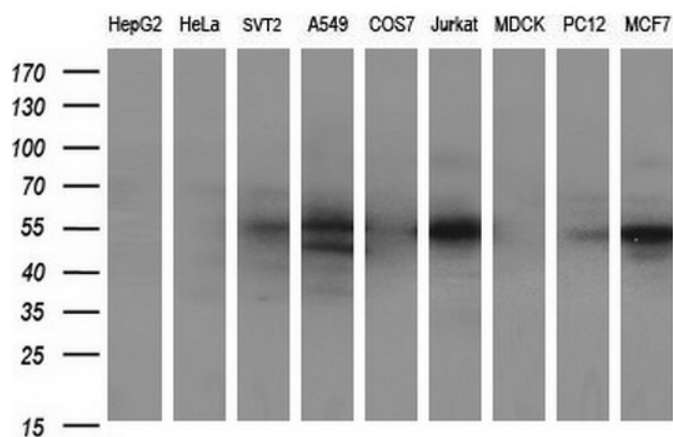
[View online »](#)

Note: This antibody was generated by SDIX's Genomic Antibody Technology® (GAT). [Learn about GAT](#)

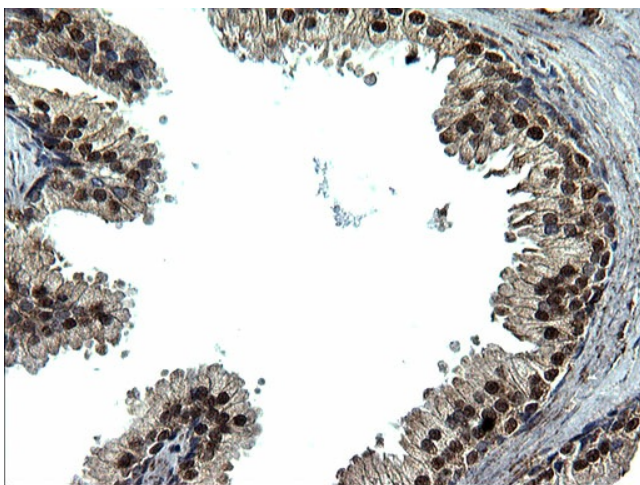
Product images:



HEK293T cells were transfected with the pCMV6-ENTRY control (Cat# [PS100001], Left lane) or pCMV6-ENTRY WIPF1 (Cat# [RC217601], Right lane) cDNA for 48 hrs and lysed. Equivalent amounts of cell lysates (5 ug per lane) were separated by SDS-PAGE and immunoblotted with anti-WIPF1 (Cat# TA590158). Positive lysates [LY401163] (100ug) and [LC401163] (20ug) can be purchased separately from OriGene.



Western blot analysis of extracts (35ug) from 9 different cell lines by using anti-WIPF1 polyclonal antibody (HepG2: human; HeLa: human; SVT2: mouse; A549: human; COS7: monkey; Jurkat: human; MDCK: canine; PC12: rat; MCF7: human).



Immunohistochemical staining of paraffin-embedded Human prostate tissue using anti-WIPF1 rabbit polyclonal antibody. (TA590158)