

Product datasheet for **TA590155**

TCTP (TPT1) Rabbit Polyclonal Antibody

Product data:

Product Type:	Primary Antibodies
Applications:	IHC, WB
Recommended Dilution:	WB 1:20000, IHC 1:150, ELISA 1:100-1:2000
Reactivity:	Human
Host:	Rabbit
Isotype:	IgG
Clonality:	Polyclonal
Immunogen:	DNA immunization. This antibody was made against a protein fragment from the N Terminus Region
Formulation:	20 mM Potassium Phosphate, 150 mM Sodium Chloride, pH 7.0
Concentration:	1.06mg/ml
Purification:	Purified from mouse ascites fluids or tissue culture supernatant by affinity chromatography (protein A/G)
Conjugation:	Unconjugated
Storage:	Store at -20°C as received.
Stability:	Stable for 12 months from date of receipt.
Gene Name:	tumor protein, translationally-controlled 1
Database Link:	NP_003286 Entrez Gene 7178 Human P13693



[View online »](#)

Background:

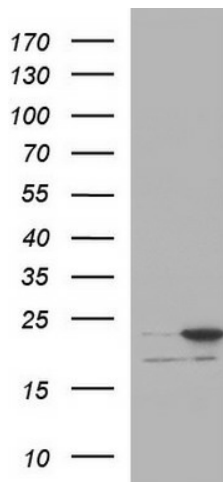
Histamine is an inflammatory mediator that is ubiquitously expressed and has a broad range of pharmacologic effects. Specifically, it plays a role in the central nervous, gastrointestinal, respiratory and immune systems. Histamine release is mediated by the stimulation of mast cells and basophils. Histamine-releasing factor (HRF) is a cytokine-like molecule that causes the release of histamine, IL-4 and IL-13 from basophils as well as the secretion of IL-8 and a calcium response in eosinophils. HRF belongs to the translationally controlled tumor protein (TCTP) family and is detected as a protein of 21 kDa in mice and 23 kDa in human. It is expressed in several healthy and tumoral cells, including erythrocytes, hepatocytes, macrophages, platelets, keratinocytes, erythroleukemia cells, gliomas, melanomas, hepatoblastomas and lymphomas, and it is localized in the cytoplasm. HRF plays a pivotal role in allergic diseases, and due to its wide distribution in brain, is thought to be involved in neurodegenerative disorders, such as Alzheimer's disease and Down Syndrome.

Synonyms:

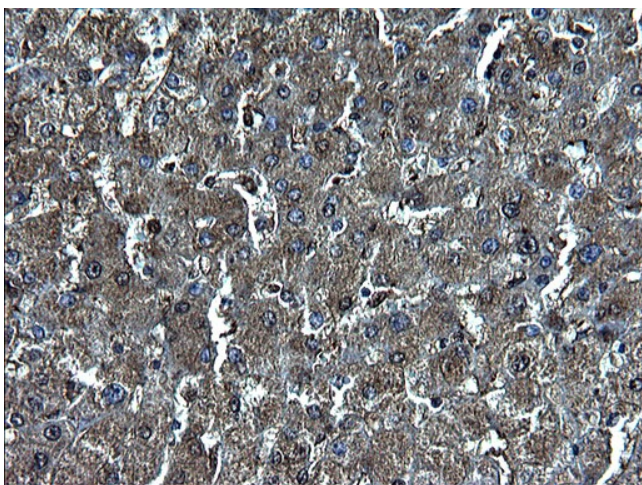
HRF; p02; p23; TCTP

Note:

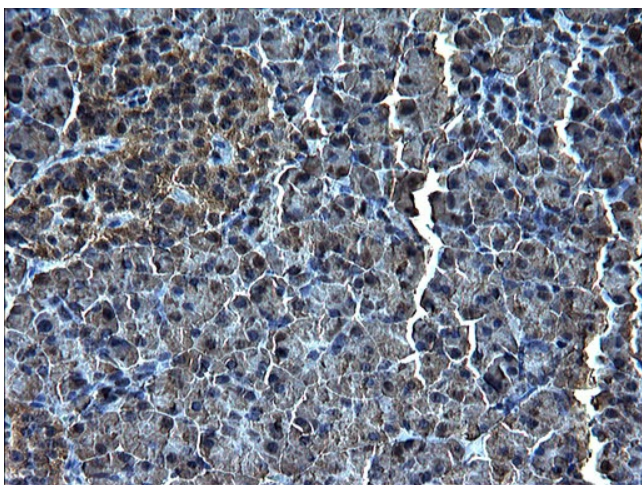
This antibody was generated by SDIX's Genomic Antibody Technology® (GAT). [Learn about GAT](#)

Product images:

HEK293T cells were transfected with the pCMV6-ENTRY control (Cat# [PS100001], Left lane) or pCMV6-ENTRY TPT1 (Cat# [RC201664], Right lane) cDNA for 48 hrs and lysed. Equivalent amounts of cell lysates (5 ug per lane) were separated by SDS-PAGE and immunoblotted with anti-TPT1 (Cat# TA590155). Positive lysates [LY401136] (100ug) and [LC401136] (20ug) can be purchased separately from OriGene.



Immunohistochemical staining of paraffin-embedded Human liver tissue using anti-TPT1 Rabbit Polyclonal antibody. (TA590155)



Immunohistochemical staining of paraffin-embedded Human pancreas tissue using anti-TPT1 Rabbit Polyclonal antibody. (TA590155)