

Product datasheet for **TA590152**

Cripto1 (TDGF1) Rabbit Polyclonal Antibody

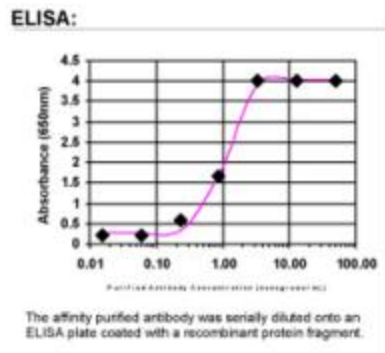
Product data:

Product Type:	Primary Antibodies
Applications:	ELISA
Recommended Dilution:	ELISA: 1:100-1:2000
Reactivity:	Human
Host:	Rabbit
Isotype:	IgG
Clonality:	Polyclonal
Immunogen:	DNA immunization. This antibody is specific for the entire range of the target protein.
Formulation:	20 mM Potassium Phosphate, 150 mM Sodium Chloride, pH 7.0
Concentration:	0.72482 mg/ml
Purification:	Purified from mouse ascites fluids or tissue culture supernatant by affinity chromatography (protein A/G)
Conjugation:	Unconjugated
Storage:	Store at -20°C as received.
Stability:	Stable for 12 months from date of receipt.
Gene Name:	teratocarcinoma-derived growth factor 1
Database Link:	NP_003203 Entrez Gene 6997 Human P13385
Background:	The cripto gene is expressed both in ES cells and during the early phases of embryo development, while, in the adult, it is reactivated in a wide range of epithelial cancers.
Synonyms:	CR; CRGF; CRIPTO
Note:	This antibody was generated by SDIX's Genomic Antibody Technology® (GAT). Learn about GAT
Protein Families:	Druggable Genome, Embryonic stem cells, ES Cell Differentiation/IPS, Stem cell - Pluripotency, Transmembrane



[View online »](#)

Product images:



ELISA: Cripto1 Antibody