

## Product datasheet for **TA590145**

### Parathyroid hormone related protein (PTHrH) Rabbit Polyclonal Antibody

#### Product data:

Product Type:	Primary Antibodies
Applications:	ELISA
Recommended Dilution:	ELISA: 1:100-1:2000
Reactivity:	Human
Host:	Rabbit
Isotype:	IgG
Clonality:	Polyclonal
Immunogen:	DNA immunization. This antibody is specific for the Middle Region of the target protein.
Formulation:	20 mM Potassium Phosphate, 150 mM Sodium Chloride, pH 7.0
Concentration:	1.28321 mg/ml
Purification:	Purified from mouse ascites fluids or tissue culture supernatant by affinity chromatography (protein A/G)
Conjugation:	Unconjugated
Storage:	Store at -20°C as received.
Stability:	Stable for 12 months from date of receipt.
Gene Name:	parathyroid hormone like hormone
Database Link:	<a href="#">NP_002811</a> <a href="#">Entrez Gene 5744 Human</a> <a href="#">P12272</a>
Background:	Parathyroid hormone is secreted by parathyroid cells. This hormone elevates blood Ca <sup>2+</sup> levels by dissolving the salts in bone and preventing their renal excretion. Defects in this gene are a cause of familial isolated hypoparathyroidism (FIH). Most PTH is secreted in its intact, mature 9.5 kDa form, amino acids 1-84; however, it can also be secreted as N-terminal truncated fragments or C-terminal fragments after intracellular degradation, as in case of hypercalcemia. No PTH fragment has been found to be the result of another gene or alternative splicing of the PTH gene.
Synonyms:	BDE2; HHM; PLP; PTHR; PTHRP

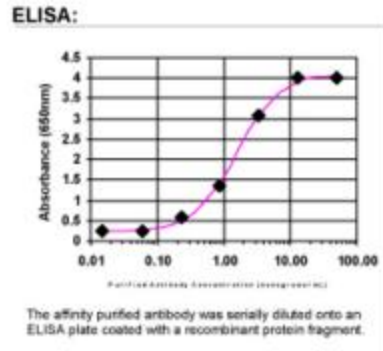


[View online »](#)

**Note:** This antibody was generated by SDIX's Genomic Antibody Technology® (GAT). [Learn about GAT](#)

**Protein Families:** Druggable Genome, Secreted Protein

**Product images:**



ELISA: PTHrP Antibody