

## Product datasheet for **TA590137**

### PCNA Rabbit Polyclonal Antibody

#### Product data:

Product Type:	Primary Antibodies
Applications:	ELISA, IHC, WB
Recommended Dilution:	WB 1:5000~20000, IHC 1:150, ELISA 1:100-1:2000
Reactivity:	Human, Dog, Rat, Monkey, Mouse
Host:	Rabbit
Isotype:	IgG
Clonality:	Polyclonal
Immunogen:	DNA immunization. This antibody is specific for the Middle Region of the target protein.
Formulation:	20 mM Potassium Phosphate, 150 mM Sodium Chloride, pH 7.0
Concentration:	0.9mg/ml
Purification:	Purified from mouse ascites fluids or tissue culture supernatant by affinity chromatography (protein A/G)
Conjugation:	Unconjugated
Storage:	Store at -20°C as received.
Stability:	Stable for 12 months from date of receipt.
Gene Name:	proliferating cell nuclear antigen
Database Link:	<a href="#">NP_002583</a> <a href="#">Entrez Gene 18538 Mouse</a> <a href="#">Entrez Gene 25737 Rat</a> <a href="#">Entrez Gene 477166 Dog</a> <a href="#">Entrez Gene 718006 Monkey</a> <a href="#">Entrez Gene 5111 Human</a> <a href="#">P12004</a>
Background:	PCNA is a marker for cells in early G1 phase and S phase of the cell cycle. It is found in the nucleus and is a cofactor of DNA polymerase delta. PCNA acts as a homotrimer and helps increase the processivity of leading strand synthesis during DNA replication. In response to DNA damage, PCNA is ubiquitinated and is involved in the RAD6 dependent DNA repair pathway. Two transcript variants encoding the same protein have been found for PCNA. Pseudogenes of this gene have been described on chromosome 4 and on the X chromosome.
Synonyms:	ATLD2



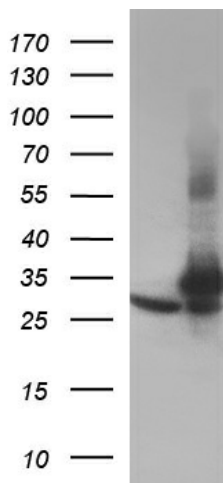
[View online »](#)

**Note:** This antibody was generated by SDIX's Genomic Antibody Technology® (GAT). [Learn about GAT](#)

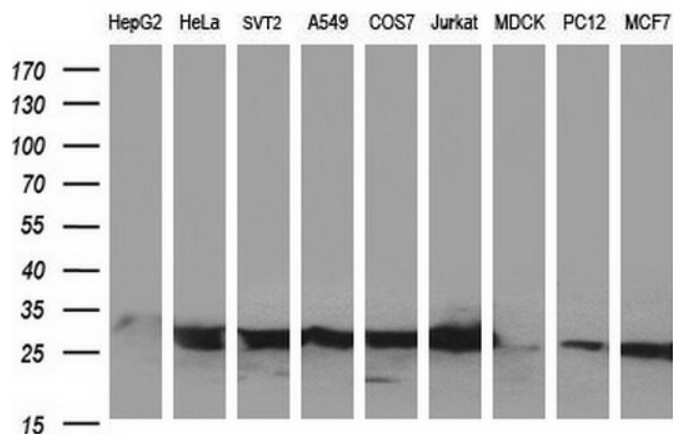
**Protein Families:** Druggable Genome, Stem cell - Pluripotency

**Protein Pathways:** Base excision repair, Cell cycle, DNA replication, Mismatch repair, Nucleotide excision repair

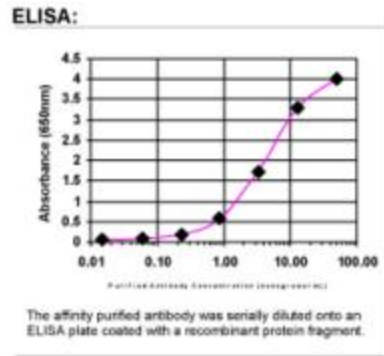
**Product images:**



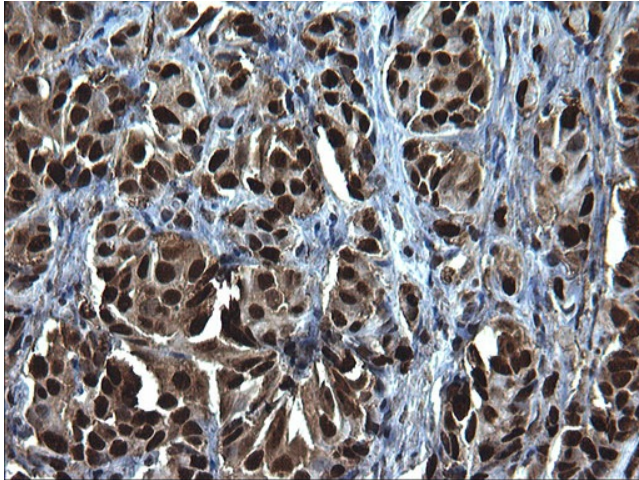
HEK293T cells were transfected with the pCMV6-ENTRY control (Left lane) or pCMV6-ENTRY PCNA ([RC201741], Right lane) cDNA for 48 hrs and lysed. Equivalent amounts of cell lysates (5 ug per lane) were separated by SDS-PAGE and immunoblotted with anti-PCNA. Positive lysates [LY400929] (100ug) and [LC400929] (20ug) can be purchased separately from OriGene.



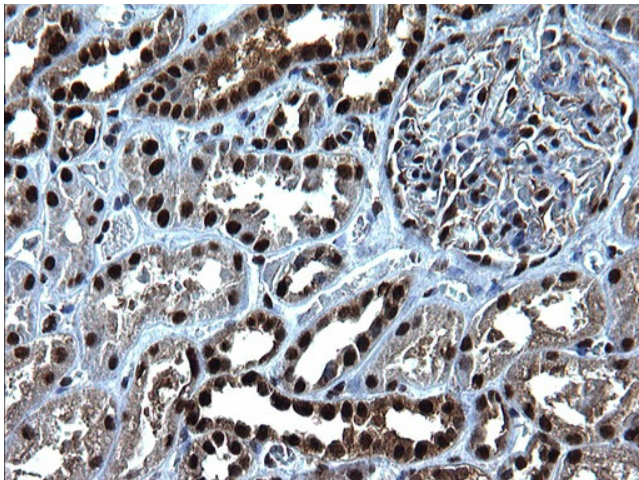
Western blot analysis of extracts (35ug) from 9 different cell lines by using anti-PCNA polyclonal antibody (HepG2: human; HeLa: human; SVT2: mouse; A549: human; COS7: monkey; Jurkat: human; MDCK: canine; PC12: rat; MCF7: human).



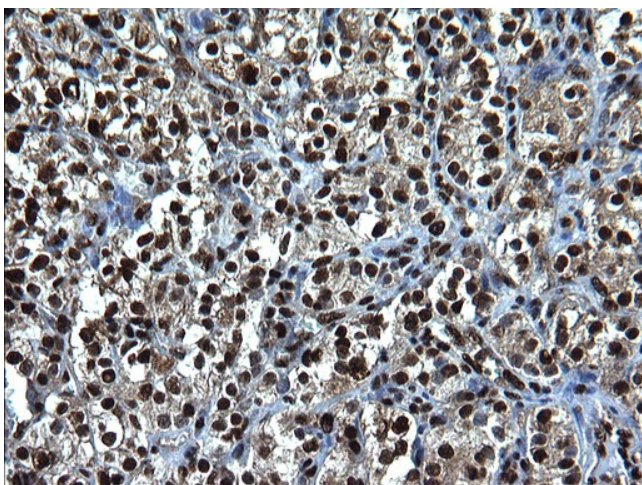
ELISA: PCNA Antibody



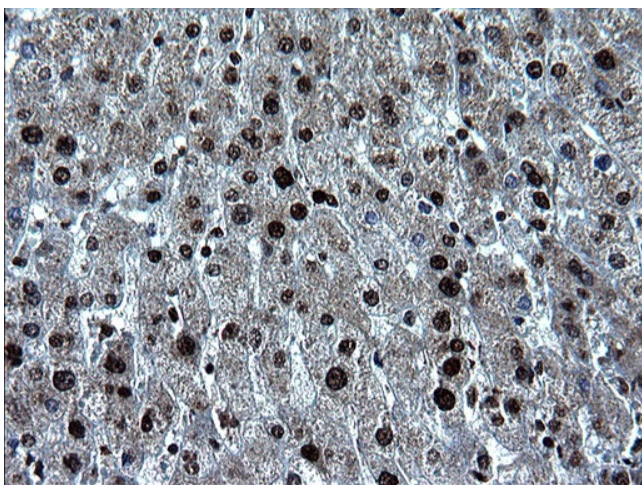
Immunohistochemical staining of paraffin-embedded Adenocarcinoma of Human breast tissue using anti-PCNA Rabbit Polyclonal antibody. (TA590137)



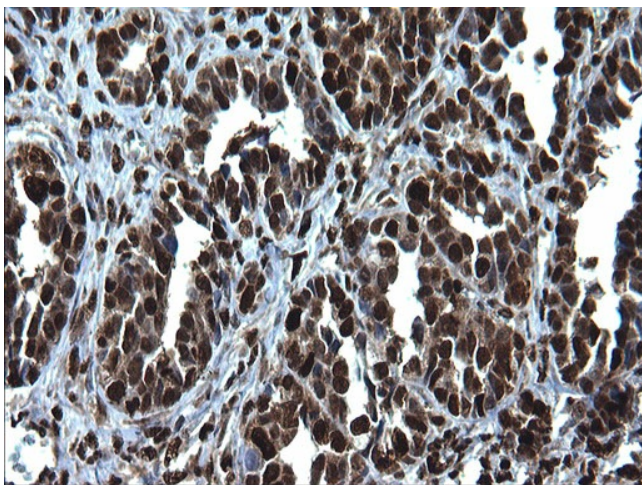
Immunohistochemical staining of paraffin-embedded Human Kidney tissue using anti-PCNA Rabbit Polyclonal antibody. (TA590137)



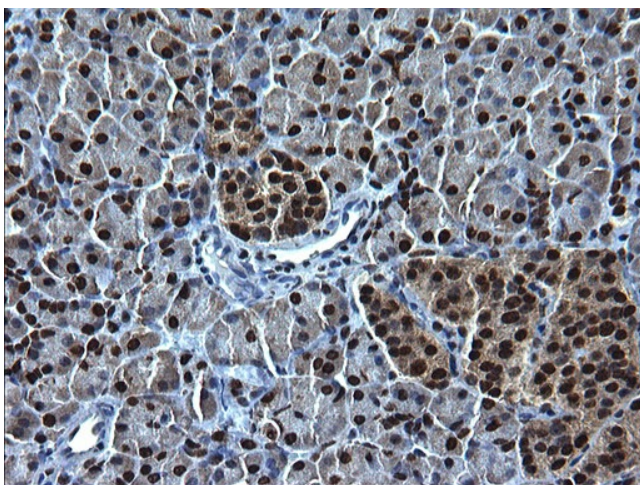
Immunohistochemical staining of paraffin-embedded Carcinoma of Human kidney tissue using anti-PCNA Rabbit Polyclonal antibody. (TA590137)



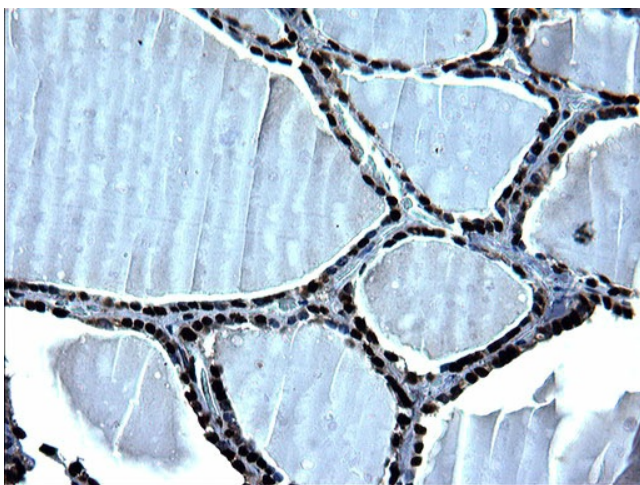
Immunohistochemical staining of paraffin-embedded Human liver tissue using anti-PCNA Rabbit Polyclonal antibody. (TA590137)



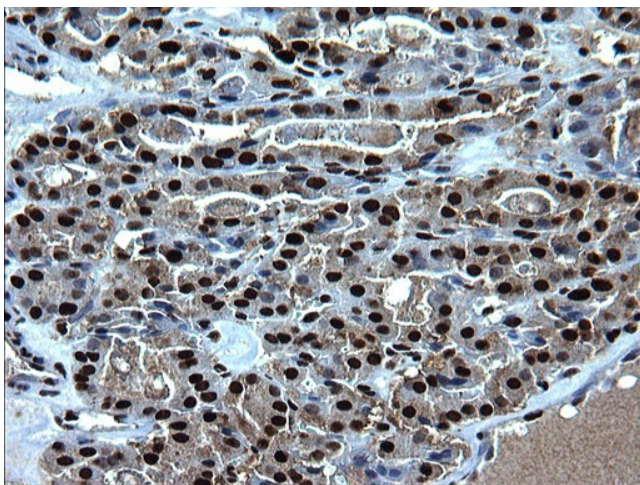
Immunohistochemical staining of paraffin-embedded Adenocarcinoma of Human ovary tissue using anti-PCNA Rabbit Polyclonal antibody. (TA590137)



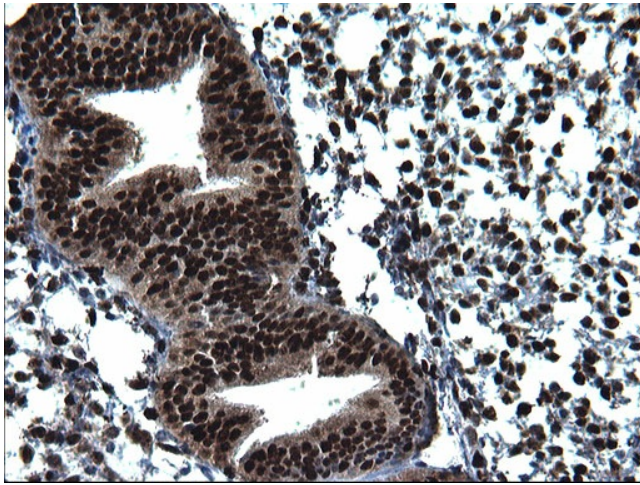
Immunohistochemical staining of paraffin-embedded Human pancreas tissue using anti-PCNA Rabbit Polyclonal antibody. (TA590137)



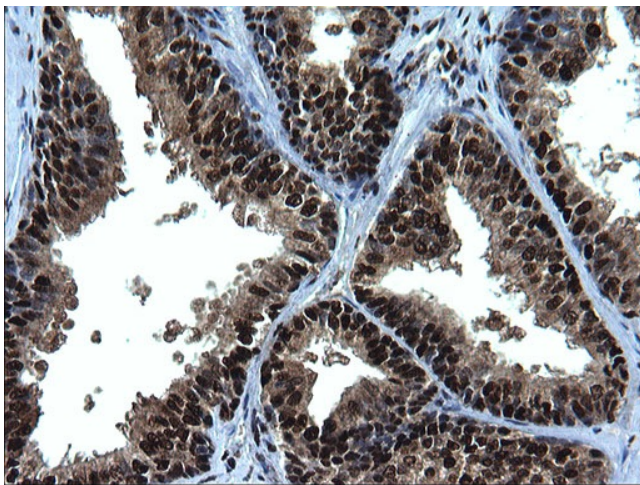
Immunohistochemical staining of paraffin-embedded Human thyroid tissue using anti-PCNA Rabbit Polyclonal antibody. (TA590137)



Immunohistochemical staining of paraffin-embedded Carcinoma of Human thyroid tissue using anti-PCNA Rabbit Polyclonal antibody. (TA590137)



Immunohistochemical staining of paraffin-embedded Human endometrium tissue using anti-PCNA Rabbit Polyclonal antibody. (TA590137)



Immunohistochemical staining of paraffin-embedded Human prostate tissue using anti-PCNA Rabbit Polyclonal antibody. (TA590137)