

## Product datasheet for **TA590135**

### PDGF Receptor beta (PDGFRB) Rabbit Polyclonal Antibody

#### Product data:

|                       |   |
|-----------------------|---|
| Product Type:         | Primary Antibodies  |
| Applications:         | ELISA   |
| Recommended Dilution: | WB: 1:5000-1:20000; ELISA: 1:100-1:2000; IHC: 1:10-1:2000; IHC-P 1:250-1:2000   |
| Reactivity:           | Human   |
| Host:                 | Rabbit  |
| Isotype:              | IgG   |
| Clonality:            | Polyclonal  |
| Immunogen:            | DNA immunization. This antibody is specific for the N Terminus Region of the target protein.  |
| Formulation:          | 20 mM Potassium Phosphate, 150 mM Sodium Chloride, pH 7.0   |
| Concentration:        | 1.02mg/ml   |
| Purification:         | Purified from mouse ascites fluids or tissue culture supernatant by affinity chromatography (protein A/G)   |
| Conjugation:          | Unconjugated  |
| Storage:              | Store at -20°C as received.   |
| Stability:            | Stable for 12 months from date of receipt.  |
| Gene Name:            | platelet derived growth factor receptor beta  |
| Database Link:        | <a href="#">NP_002600</a><br><a href="#">Entrez Gene 5159 Human P09619</a>  |
| Background:           | Human platelet-derived growth factor (PDGF) receptor, is a receptor tyrosine kinase whose activity induces various signalling cascades leading to cell growth and proliferation. Two major isoforms exist, PDGF receptor-alpha and PDGF receptor-beta. PDGF receptor-beta can only bind two specific PDGF isoforms, PDGF-beta and PDGF-delta (1,2). Upon ligand binding, the receptor undergoes autophosphorylation, allowing binding and activation of cytoplasmic SH2 domain-containing signal transduction molecules such as PI kinase (3), Grb2, and Src, among others. |
| Synonyms:             | CD140B; IBGC4; IMF1; JTK12; PDGFR; PDGFR-1; PDGFR1  |



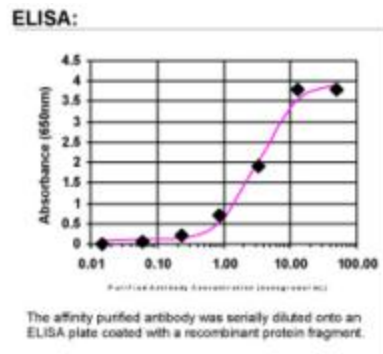
[View online »](#)

**Note:** This antibody was generated by SDIX's Genomic Antibody Technology® (GAT). [Learn about GAT](#)

**Protein Families:** Druggable Genome, ES Cell Differentiation/IPS, Protein Kinase, Transmembrane

**Protein Pathways:** Calcium signaling pathway, Colorectal cancer, Cytokine-cytokine receptor interaction, Focal adhesion, Gap junction, Glioma, MAPK signaling pathway, Melanoma, Pathways in cancer, Prostate cancer, Regulation of actin cytoskeleton

### Product images:



ELISA: PDGF Receptor beta Antibody