

Product datasheet for **TA590134**

PDGF beta (PDGFB) Rabbit Polyclonal Antibody

Product data:

Product Type:	Primary Antibodies
Applications:	ELISA
Recommended Dilution:	WB: 1:5000-1:20000; ELISA: 1:100-1:2000; IHC: 1:10-1:2000; IHC-P 1:250-1:2000
Reactivity:	Human
Host:	Rabbit
Isotype:	IgG
Clonality:	Polyclonal
Immunogen:	DNA immunization. This antibody is specific for the Middle Region of the target protein.
Formulation:	20 mM Potassium Phosphate, 150 mM Sodium Chloride, pH 7.0
Concentration:	0.83mg/ml
Purification:	Purified from mouse ascites fluids or tissue culture supernatant by affinity chromatography (protein A/G)
Conjugation:	Unconjugated
Storage:	Store at -20°C as received.
Stability:	Stable for 12 months from date of receipt.
Gene Name:	platelet derived growth factor subunit B
Database Link:	NP_002599 Entrez Gene 5155 Human P01127
Background:	Platelet Derived Growth Factor (PDGF) is the major serum mitogen for cells of mesenchymal origin in humans. The biologically active protein is a dimer composed of two related polypeptides designated A and B. The PDGF protein has been implicated both directly as well as indirectly in several pathological states including neoplasia, arthritis, arteriosclerosis and bone marrow sclerosis.
Synonyms:	c-sis; IBGC5; PDGF-2; PDGF2; SIS; SSV
Note:	This antibody was generated by SDIX's Genomic Antibody Technology® (GAT). Learn about GAT

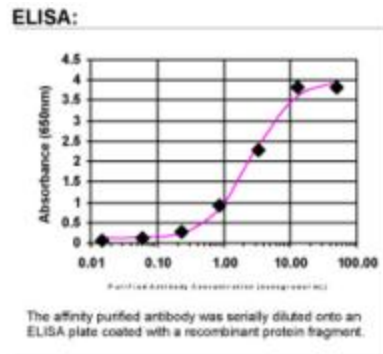


[View online »](#)

Protein Families: Druggable Genome

Protein Pathways: Cytokine-cytokine receptor interaction, Focal adhesion, Gap junction, Glioma, MAPK signaling pathway, Melanoma, Pathways in cancer, Prostate cancer, Regulation of actin cytoskeleton, Renal cell carcinoma

Product images:



ELISA: PDGFB Antibody