

Product datasheet for **TA590133**

NRAS Rabbit Polyclonal Antibody

Product data:

Product Type:	Primary Antibodies
Applications:	ELISA, IHC, WB
Recommended Dilution:	WB 1:20000, IHC 1:150, ELISA 1:100-1:2000
Reactivity:	Human
Host:	Rabbit
Isotype:	IgG
Clonality:	Polyclonal
Immunogen:	DNA immunization. This antibody is specific for the C Terminus Region of the target protein.
Formulation:	20 mM Potassium Phosphate, 150 mM Sodium Chloride, pH 7.0
Concentration:	1.1 mg/ml
Purification:	Purified from mouse ascites fluids or tissue culture supernatant by affinity chromatography (protein A/G)
Conjugation:	Unconjugated
Storage:	Store at -20°C as received.
Stability:	Stable for 12 months from date of receipt.
Gene Name:	NRAS proto-oncogene, GTPase
Database Link:	NP_002515 Entrez Gene 4893 Human P01111
Background:	Ras, a signal transducer, was first characterized as the transforming genes of Harvey & Kristen sarcoma virus (1). The Ras family (H-Ras, N-Ras, and K-Ras) regulates cell growth, differentiation and apoptosis (2). Switching from an active or resting state, Ras can either bind GTP or GDP respectively. In the triphosphate conformation, Ras will interact with GTPase activating protein (GAP) to increase its activity (3). Mutations in any of the three isoforms can convert these proteins into active oncogenes. Additionally, Ras mutations are found in 30% of all human cancer (4).
Synonyms:	ALPS4; CMNS; N-ras; NCMS; NRAS1; NS6



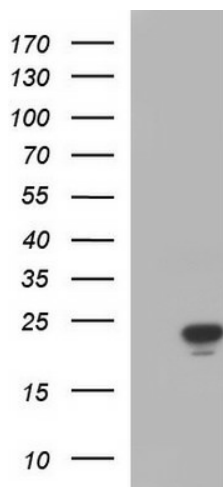
[View online »](#)

Note: This antibody was generated by SDIX's Genomic Antibody Technology® (GAT). [Learn about GAT](#)

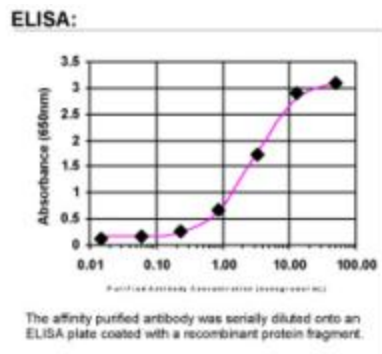
Protein Families: Druggable Genome

Protein Pathways: Acute myeloid leukemia, Axon guidance, B cell receptor signaling pathway, Bladder cancer, Chemokine signaling pathway, Chronic myeloid leukemia, Endometrial cancer, ErbB signaling pathway, Fc epsilon RI signaling pathway, Gap junction, Glioma, GnRH signaling pathway, Insulin signaling pathway, Long-term depression, Long-term potentiation, MAPK signaling pathway, Melanogenesis, Melanoma, Natural killer cell mediated cytotoxicity, Neurotrophin signaling pathway, Non-small cell lung cancer, Pathways in cancer, Prostate cancer, Regulation of actin cytoskeleton, Renal cell carcinoma, T cell receptor signaling pathway, Thyroid cancer, Tight junction, VEGF signaling pathway

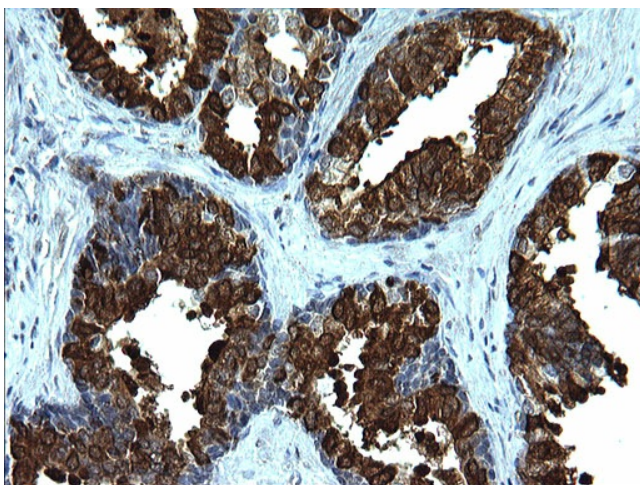
Product images:



HEK293T cells were transfected with the pCMV6-ENTRY control (Left lane) or pCMV6-ENTRY NRAS ([RC202681], Right lane) cDNA for 48 hrs and lysed. Equivalent amounts of cell lysates (5 ug per lane) were separated by SDS-PAGE and immunoblotted with anti-NRAS. Positive lysates [LY400901] (100ug) and [LC400901] (20ug) can be purchased separately from OriGene.



ELISA: NRAS Antibody



Immunohistochemical staining of paraffin-embedded Human prostate tissue using anti-NRAS Rabbit Polyclonal antibody. (TA590133)