

## Product datasheet for **TA590132**

### CCN3 (NOV) Rabbit Polyclonal Antibody

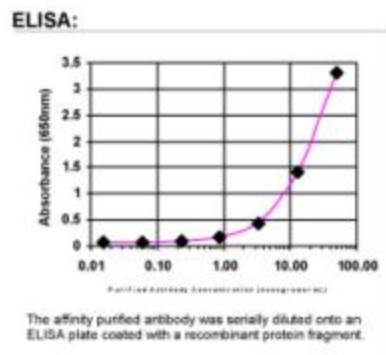
#### Product data:

Product Type:	Primary Antibodies
Applications:	ELISA
Recommended Dilution:	WB: 1:5000-1:20000; ELISA: 1:100-1:2000; IHC: 1:10-1:2000; IHC-P 1:250-1:2000
Reactivity:	Human
Host:	Rabbit
Isotype:	IgG
Clonality:	Polyclonal
Immunogen:	DNA immunization. This antibody is specific for the Middle Region of the target protein.
Formulation:	20 mM Potassium Phosphate, 150 mM Sodium Chloride, pH 7.0
Concentration:	1.09mg/ml
Purification:	Purified from mouse ascites fluids or tissue culture supernatant by affinity chromatography (protein A/G)
Conjugation:	Unconjugated
Storage:	Store at -20°C as received.
Stability:	Stable for 12 months from date of receipt.
Gene Name:	cellular communication network factor 3
Database Link:	<a href="#">NP_002505</a> <a href="#">Entrez Gene 4856 Human</a> <a href="#">P48745</a>
Background:	The protein encoded by this gene is a small secreted cysteine-rich protein and a member of the CCN family of regulatory proteins. CNN family proteins associate with the extracellular matrix and play an important role in cardiovascular and skeletal development, fibrosis and cancer development. [provided by RefSeq]
Synonyms:	CCN3; IBP-9; IGFBP-9; IGFBP9; NOVh
Note:	This antibody was generated by SDIX's Genomic Antibody Technology® (GAT). <a href="#">Learn about GAT</a>
Protein Families:	ES Cell Differentiation/IPS, Secreted Protein



[View online »](#)

## Product images:



ELISA: CCN3 Antibody