

Product datasheet for **TA590104**

Cathepsin D (CTSD) Rabbit Polyclonal Antibody

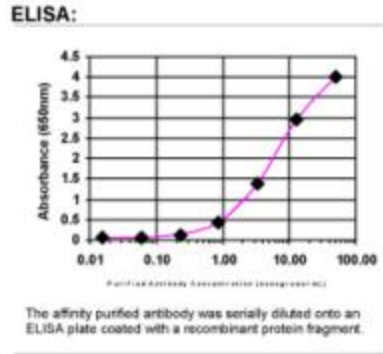
Product data:

| | |
|-----------------------|---|
| Product Type: | Primary Antibodies |
| Applications: | ELISA, IHC, WB |
| Recommended Dilution: | WB 1:20000, IHC 1:150,ELISA 1:100-1:2000 |
| Reactivity: | Human |
| Host: | Rabbit |
| Isotype: | IgG |
| Clonality: | Polyclonal |
| Immunogen: | DNA immunization. This antibody is specific for the Middle Region of the target protein. |
| Formulation: | 20 mM Potassium Phosphate, 150 mM Sodium Chloride, pH 7.0 |
| Concentration: | 0.83mg/ml |
| Purification: | Purified from mouse ascites fluids or tissue culture supernatant by affinity chromatography (protein A/G) |
| Conjugation: | Unconjugated |
| Storage: | Store at -20°C as received. |
| Stability: | Stable for 12 months from date of receipt. |
| Gene Name: | cathepsin D |
| Database Link: | NP_001900 Entrez Gene 1509 Human P07339 |
| Background: | Cathepsin D has been reported to be involved in malignant tumour progression and with prognosis of various human cancers. |
| Synonyms: | CLN10; CPSD; HEL-S-130P |
| Note: | This antibody was generated by SDIX's Genomic Antibody Technology® (GAT). Learn about GAT |
| Protein Families: | Druggable Genome, Protease |
| Protein Pathways: | Lysosome |

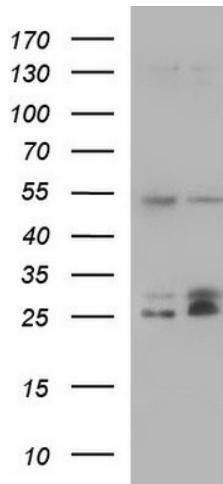


[View online »](#)

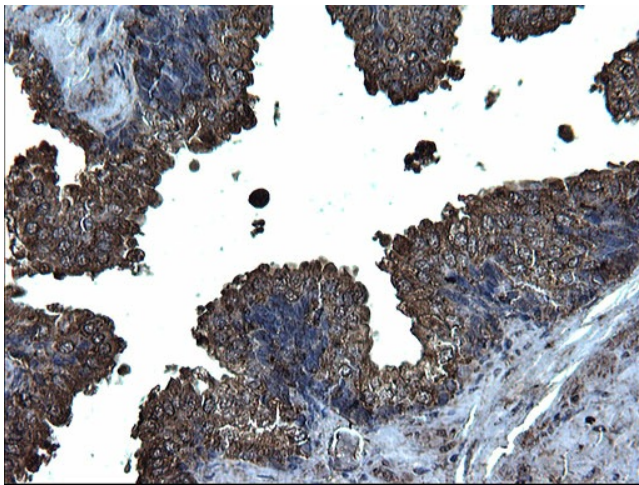
Product images:



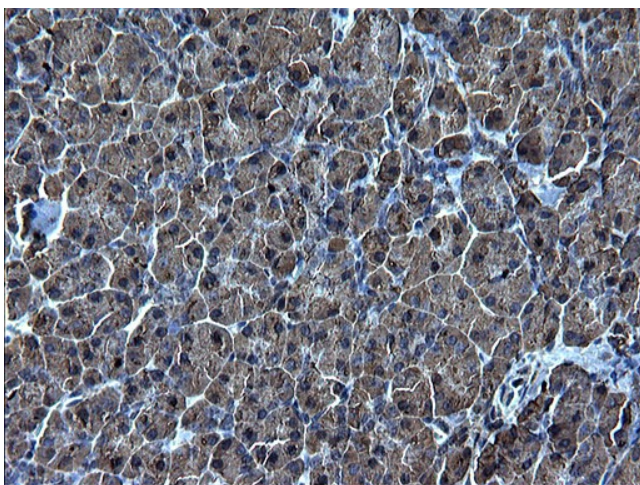
ELISA: Cathepsin D Antibody



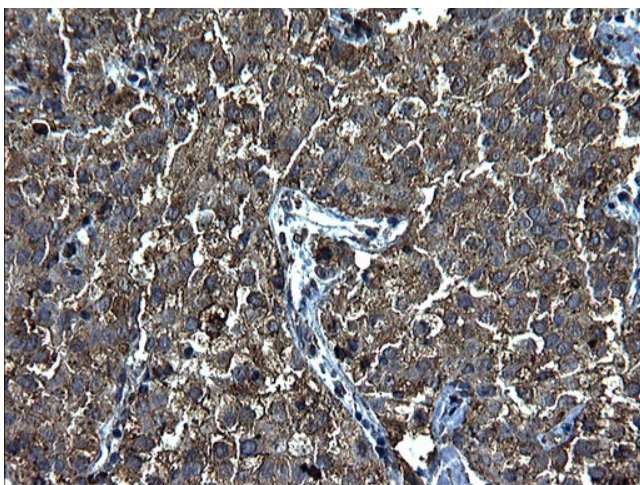
HEK293T cells were transfected with the pCMV6-ENTRY control (Cat# [PS100001], Left lane) or pCMV6-ENTRY CTSD (Cat# [RC200719], Right lane) cDNA for 48 hrs and lysed. Equivalent amounts of cell lysates (5 µg per lane) were separated by SDS-PAGE and immunoblotted with anti-CTSD (Cat# TA590104). Positive lysates [LY400712] (100µg) and [LC400712] (20µg) can be purchased separately from OriGene.



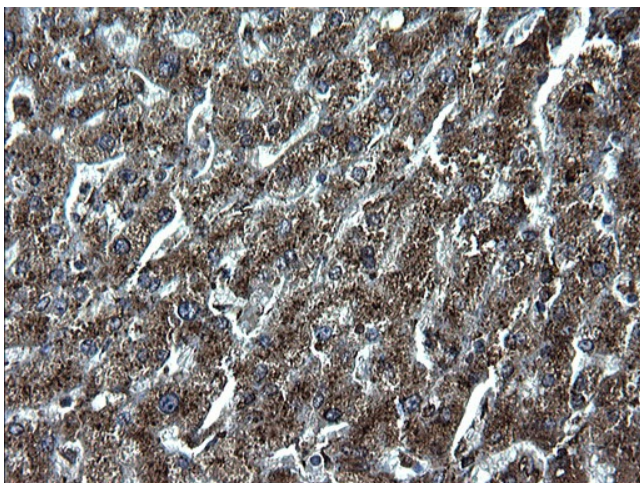
Immunohistochemical staining of paraffin-embedded Human prostate tissue using anti-CTSD Rabbit Polyclonal antibody. (TA590104). Heat-induced epitope retrieval by EDTA solution buffer pH 8.0 at 120°C for 3 min.



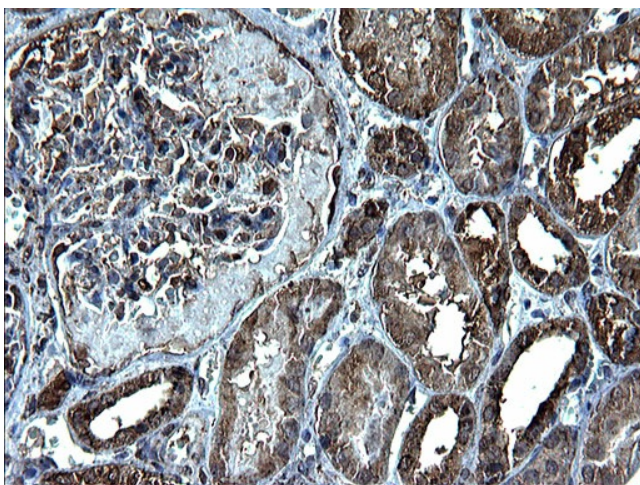
Immunohistochemical staining of paraffin-embedded Human pancreas tissue using anti-CTSD Rabbit Polyclonal antibody. (TA590104). Heat-induced epitope retrieval by EDTA solution buffer pH 8.0 at 120°C for 3 min.



Immunohistochemical staining of paraffin-embedded Carcinoma of Human liver tissue using anti-CTSD Rabbit Polyclonal antibody. (TA590104). Heat-induced epitope retrieval by EDTA solution buffer pH 8.0 at 120°C for 3 min.



Immunohistochemical staining of paraffin-embedded Human liver tissue using anti-CTSD Rabbit Polyclonal antibody. (TA590104). Heat-induced epitope retrieval by EDTA solution buffer pH 8.0 at 120°C for 3 min.



Immunohistochemical staining of paraffin-embedded Human Kidney tissue using anti-CTSD Rabbit Polyclonal antibody. (TA590104). Heat-induced epitope retrieval by EDTA solution buffer pH 8.0 at 120°C for 3 min.