

Product datasheet for **TA590089**

Amphiphysin (AMPH) Rabbit Polyclonal Antibody

Product data:

Product Type:	Primary Antibodies
Applications:	ELISA
Recommended Dilution:	WB: 1:5000-1:20000; ELISA: 1:100-1:2000
Reactivity:	Human
Host:	Rabbit
Isotype:	IgG
Clonality:	Polyclonal
Immunogen:	DNA immunization. This antibody is specific for the Middle Region of the target protein.
Formulation:	20 mM Potassium Phosphate, 150 mM Sodium Chloride, pH 7.0
Concentration:	1 mg/ml
Purification:	Purified from mouse ascites fluids or tissue culture supernatant by affinity chromatography (protein A/G)
Conjugation:	Unconjugated
Storage:	Store at -20°C as received.
Stability:	Stable for 12 months from date of receipt.
Gene Name:	amphiphysin
Database Link:	NP_001626 Entrez Gene 273 Human P49418

Background: Amphiphysin, a neuronal protein first identified in chicken synaptic membranes, is the autoantigen of Stiff-Man Syndrome (SMS) associated with breast cancer. Patient autoantibodies have a distinct pattern of reactivity with amphiphysin, and the dominant autoepitope is located in its C-terminal region, which contains an SH3 domain (1). Amphiphysin is expressed in many neurons, certain endocrine cell types, and spermatocytes (2). study suggests a link between amphiphysin I expression in cancer and amphiphysin I autoimmunity. The enhanced expression of amphiphysin I in some forms of cancer supports the hypothesis that amphiphysin family members may play a role in the biology of cancer cells (3).



[View online »](#)

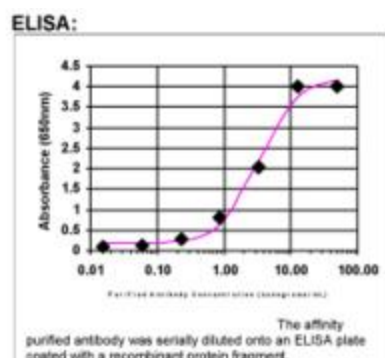
Synonyms: AMPH1

Note: This antibody was generated by SDIX's Genomic Antibody Technology® (GAT). [Learn about GAT](#)

Protein Families: Secreted Protein

Protein Pathways: Fc gamma R-mediated phagocytosis

Product images:



ELISA: Amphiphysin Antibody 16470002 - Affinity purified