

## Product datasheet for **TA590062**

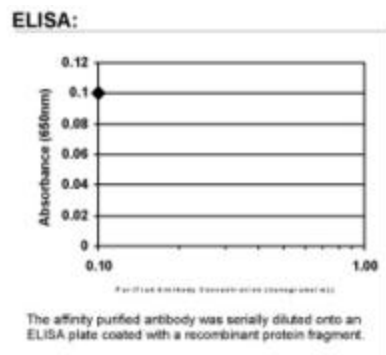
### Somatostatin Receptor 2 (SSTR2) Rabbit Polyclonal Antibody

#### Product data:

Product Type:	Primary Antibodies
Applications:	ELISA
Recommended Dilution:	WB: 1:5000-1:20000; ELISA: 1:100-1:2000
Reactivity:	Human
Host:	Rabbit
Isotype:	IgG
Clonality:	Polyclonal
Immunogen:	DNA immunization. This antibody is specific for the C Terminus Region of the target protein.
Formulation:	20 mM Potassium Phosphate, 150 mM Sodium Chloride, pH 7.0
Concentration:	0.7mg/ml
Purification:	Purified from mouse ascites fluids or tissue culture supernatant by affinity chromatography (protein A/G)
Conjugation:	Unconjugated
Storage:	Store at -20°C as received.
Stability:	Stable for 12 months from date of receipt.
Gene Name:	somatostatin receptor 2
Database Link:	<a href="#">NP_001041</a> <a href="#">Entrez Gene 6752 Human P30874</a>
Background:	Somatostatin is a tetradecapeptide that is widely distributed in the body. It acts on multiple organs in the body and also functions as a neuropeptide affecting electrical activity of neurons. Somatostatin Receptor 2 (SSR2), along with SSR1, is expressed at the highest levels in the stomach and jejunum, cerebrum and kidney, respectively.
Note:	This antibody was generated by SDIX's Genomic Antibody Technology® (GAT). <a href="#">Learn about GAT</a>
Protein Families:	Druggable Genome, GPCR, Transmembrane
Protein Pathways:	Neuroactive ligand-receptor interaction



[View online »](#)

**Product images:**

ELISA: Somatostatin Receptor 2 Antibody