

Product datasheet for **TA590049**

GM CSF (CSF2) Rabbit Polyclonal Antibody

Product data:

Product Type:	Primary Antibodies
Applications:	ELISA
Recommended Dilution:	ELISA: 1:100-1:2000
Reactivity:	Human
Host:	Rabbit
Isotype:	IgG
Clonality:	Polyclonal
Immunogen:	DNA immunization. This antibody is specific for the entire range of the target protein.
Formulation:	20 mM Potassium Phosphate, 150 mM Sodium Chloride, pH 7.0
Concentration:	0.83942 mg/ml
Purification:	Purified from mouse ascites fluids or tissue culture supernatant by affinity chromatography (protein A/G)
Conjugation:	Unconjugated
Storage:	Store at -20°C as received.
Stability:	Stable for 12 months from date of receipt.
Gene Name:	colony stimulating factor 2
Database Link:	NP_000749 Entrez Gene 1437 Human P04141
Background:	The cytokine GM-CSF stimulates the growth and differentiation of hematopoietic precursor cells from various lineages, including granulocytes, macrophages, eosinophils and erythrocytes. Used in myeloid reconstitution following bone marrow transplant, bone marrow transplant engraftment failure or delay, mobilization and following transplantation of autologous peripheral blood progenitor cells, and following induction chemotherapy in older adults with acute myelogenous leukemia.
Synonyms:	GMCSF
Note:	This antibody was generated by SDIX's Genomic Antibody Technology® (GAT). Learn about GAT

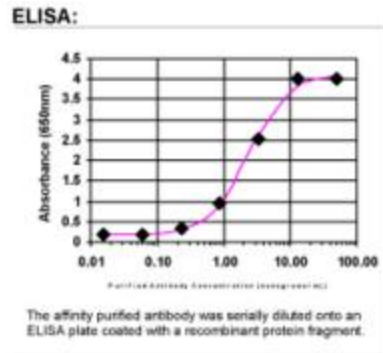


[View online »](#)

Protein Families: Druggable Genome, ES Cell Differentiation/IPS, Secreted Protein

Protein Pathways: Cytokine-cytokine receptor interaction, Fc epsilon RI signaling pathway, Hematopoietic cell lineage, Jak-STAT signaling pathway, Natural killer cell mediated cytotoxicity, T cell receptor signaling pathway

Product images:



ELISA: GM-CSF Antibody - Affinity Purified