

Product datasheet for **TA590046**

CCR2 Rabbit Polyclonal Antibody

Product data:

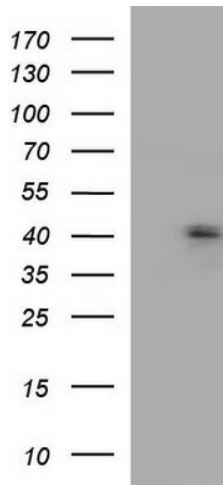
Product Type:	Primary Antibodies
Applications:	ELISA, WB
Recommended Dilution:	WB 1:20000, ELISA 1:100-1:2000
Reactivity:	Human
Host:	Rabbit
Isotype:	IgG
Clonality:	Polyclonal
Immunogen:	DNA immunization. This antibody is specific for the C Terminus Region of the target protein.
Formulation:	20 mM Potassium Phosphate, 150 mM Sodium Chloride, pH 7.0
Concentration:	1.1mg/ml
Purification:	Purified from mouse ascites fluids or tissue culture supernatant by affinity chromatography (protein A/G)
Conjugation:	Unconjugated
Storage:	Store at -20°C as received.
Stability:	Stable for 12 months from date of receipt.
Database Link:	NP_000639 Entrez Gene 1231
Background:	CCR2, or C C chemokine receptor type 2, is a receptor for several monocyte chemo attractant proteins (MCP1, MCP3, MCP4) which specifically mediate monocyte chemotaxis. CCR2 transduces such signals by increasing the intracellular level of calcium ions. For example, MCP1 is involved in monocyte infiltration in inflammatory diseases such as rheumatoid arthritis as well as in the inflammatory response against tumors. CCR2 is also an alternative coreceptor with CD4 for HIV1 infection. CCR2 has two isoforms and has been reported to be expressed in a wide variety of tissues, including blood, brain, heart, kidney, liver, lung, ovary, pancreas, spinal cord, spleen and thymus.
Synonyms:	CC-CKR-2; CCR2A; CCR2B; CD192; CKR2; CKR2A; CKR2B; CMKBR2; MCP-1-R
Note:	This antibody was generated by SDIX's Genomic Antibody Technology® (GAT). Learn about GAT



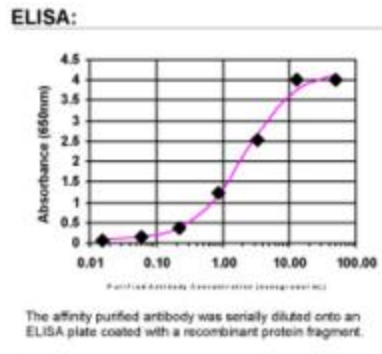
[View online »](#)

Protein Families: Druggable Genome, GPCR, Transmembrane

Product images:



HEK293T cells were transfected with the pCMV6-ENTRY control (Left lane) or pCMV6-ENTRY CCR2 ([RC221283], Right lane) cDNA for 48 hrs and lysed. Equivalent amounts of cell lysates (5 ug per lane) were separated by SDS-PAGE and immunoblotted with anti-CCR2. Positive lysates [LY400217] (100ug) and [LC400217] (20ug) can be purchased separately from OriGene.



ELISA: CCR2 Antibody