

## Product datasheet for **TA590045**

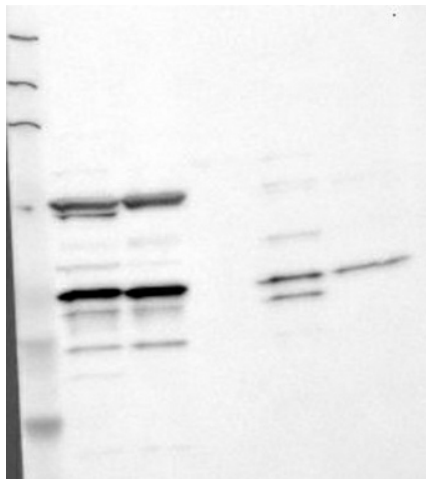
### Fas Ligand (FASLG) Rabbit Polyclonal Antibody

#### Product data:

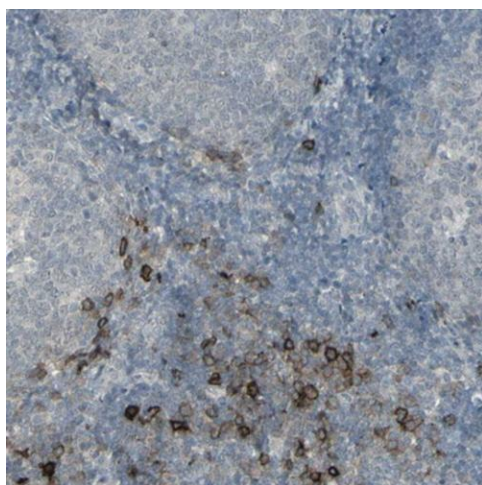
Product Type:	Primary Antibodies
Applications:	IHC, WB
Recommended Dilution:	WB: 1:500; ELISA: 1:100-1:2000; IHC: 1:200
Reactivity:	Human
Host:	Rabbit
Isotype:	IgG
Clonality:	Polyclonal
Immunogen:	DNA immunization. This antibody was made against a protein fragment from the C Terminus Region
Formulation:	20 mM Potassium Phosphate, 150 mM Sodium Chloride, pH 7.0
Concentration:	1.18mg/ml
Purification:	Purified from mouse ascites fluids or tissue culture supernatant by affinity chromatography (protein A/G)
Conjugation:	Unconjugated
Storage:	Store at -20°C as received.
Stability:	Stable for 12 months from date of receipt.
Gene Name:	Fas ligand
Database Link:	<a href="#">NP_000630</a> <a href="#">Entrez Gene 356 Human P48023</a>
Synonyms:	ALPS1B; APT1LG1; APTL; CD95-L; CD95L; CD178; FASL; TNFSF6
Note:	This antibody was generated by SDIX's Genomic Antibody Technology® (GAT). <a href="#">Learn about GAT</a>
Protein Families:	Druggable Genome, Secreted Protein, Transmembrane
Protein Pathways:	Allograft rejection, Apoptosis, Autoimmune thyroid disease, Cytokine-cytokine receptor interaction, Graft-versus-host disease, MAPK signaling pathway, Natural killer cell mediated cytotoxicity, Neurotrophin signaling pathway, Pathways in cancer, Type I diabetes mellitus



[View online »](#)

**Product images:**

Lane 1: Marker [kDa] 219, 111, 83, 48, 32, 26, 17;  
Lane 2: RT-4; Lane 3: U-251 MG; Lane 4: Human Plasma; Lane 5: Liver; Lane 6: TonsilThis  
validation was performed by Protein Atlas and the presentation of data is for informational purposes only.



Immunohistochemical staining of human tonsil shows distinct cytoplasmic and membranous positivity in a subset of lymphoid cells. This validation was performed by Protein Atlas and the presentation of data is for informational purposes only. Heat-induced epitope retrieval by EDTA solution buffer pH 8.0 at 120°C for 3 min.