

Product datasheet for **TA590042**

IFNAR1 Rabbit Polyclonal Antibody

Product data:

Product Type:	Primary Antibodies
Applications:	ELISA
Recommended Dilution:	ELISA: 1:100-1:2000
Reactivity:	Human
Host:	Rabbit
Isotype:	IgG
Clonality:	Polyclonal
Immunogen:	DNA immunization. This antibody is specific for the Middle Region of the target protein.
Formulation:	20 mM Potassium Phosphate, 150 mM Sodium Chloride, pH 7.0
Concentration:	1.04088 mg/ml
Purification:	Purified from mouse ascites fluids or tissue culture supernatant by affinity chromatography (protein A/G)
Conjugation:	Unconjugated
Storage:	Store at -20°C as received.
Stability:	Stable for 12 months from date of receipt.
Gene Name:	interferon alpha and beta receptor subunit 1
Database Link:	NP_000620 Entrez Gene 3454 Human P17181



[View online »](#)

Background:

Interferon alpha receptor 1 (IFN-alpha R1) is a class II cytokine receptor which belongs to type I human interferons (IFNs) family. IFNs plays a role in antiviral, antiproliferative, immunomodulatory, antitumor, and antiparasitic activities by inducing transcription of IFN-stimulated genes (ISGs) through activation of the Jak-STAT pathway. Specifically, IFN- α R1 is a 135-kda signal transducing subunit of the IFN alpha/beta receptor complex (IFN-alpha R) (1). IFN-alpha R1 is phospholyated through PTK- and PKC-mediated phosphorylation, which initiates docking of STAT proteins to IFNs. This leads to activation of STAT proteins by PTK-mediated phosphorylation. The mechanism behind the amplification of IFN-alpha R complex mediated transmembrane signaling has been linked to tyrosine phosphorylation on IFN-alpha R1 (2).

Synonyms:

AVP; IFN-alpha-REC; IFNAR; IFNBR; IFRC

Note:

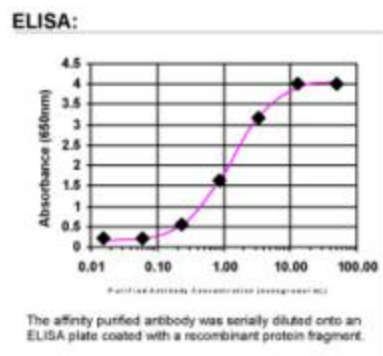
This antibody was generated by SDIX's Genomic Antibody Technology[®] (GAT). [Learn about GAT](#)

Protein Families:

Druggable Genome, Transmembrane

Protein Pathways:

Cytokine-cytokine receptor interaction, Jak-STAT signaling pathway, Natural killer cell mediated cytotoxicity, Toll-like receptor signaling pathway

Product images:

ELISA: IFNAR1 Antibody