

Product datasheet for **TA590022**

Adenylate Kinase 1 (AK1) Rabbit Polyclonal Antibody

Product data:

Product Type:	Primary Antibodies
Applications:	ELISA, IHC, WB
Recommended Dilution:	WB 1:5000, IHC 1:150, ELISA 1:100-1:2000
Reactivity:	Human, Dog, Monkey, Mouse
Host:	Rabbit
Isotype:	IgG
Clonality:	Polyclonal
Immunogen:	DNA immunization. This antibody is specific for the C Terminus Region of the target protein.
Formulation:	20 mM Potassium Phosphate, 150 mM Sodium Chloride, pH 7.0
Concentration:	1.03mg/ml
Purification:	Purified from mouse ascites fluids or tissue culture supernatant by affinity chromatography (protein A/G)
Conjugation:	Unconjugated
Storage:	Store at -20°C as received.
Stability:	Stable for 12 months from date of receipt.
Gene Name:	adenylate kinase 1
Database Link:	NP_000467 Entrez Gene 11636 Mouse Entrez Gene 480712 Dog Entrez Gene 706338 Monkey Entrez Gene 203 Human P00568

Background: Adenylate kinase is an enzyme involved in regulating the adenine nucleotide composition within a cell by catalyzing the reversible transfer of phosphate group among adinine nucleotides. Three isozymes of adenylate kinase have been identified in vertebrates, adenylate isozyme 1 (AK1), 2 (AK2) and 3 (AK3). AK1 is found in the cytosol of skeletal muscle, brain and erythrocytes, whereas AK2 and AK3 are found in the mitochondria of other tissues including liver and heart. AK1 was identified because of its association with a rare genetic disorder causing nonspherocytic hemolytic anemia where a mutation in the AK1 gene was found to reduce the catalytic activity of the enzyme.



[View online »](#)

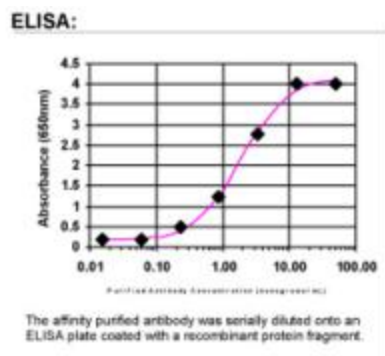
Synonyms: HTL-S-58j

Note: This antibody was generated by SDIX's Genomic Antibody Technology® (GAT). [Learn about GAT](#)

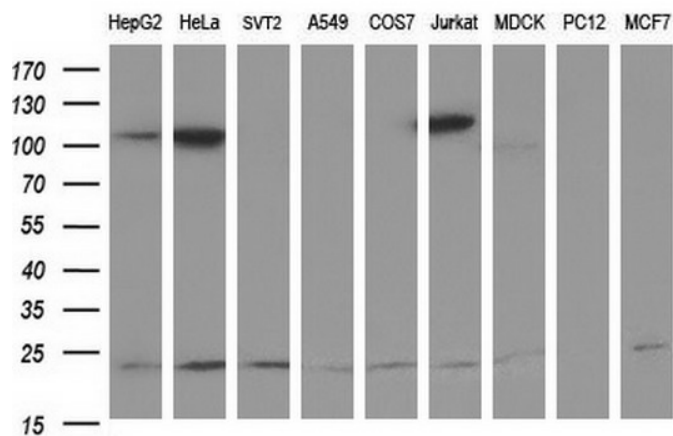
Protein Families: Druggable Genome

Protein Pathways: Metabolic pathways, Purine metabolism

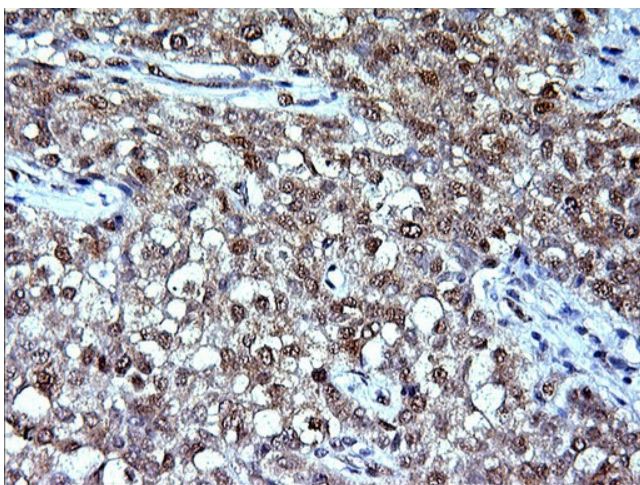
Product images:



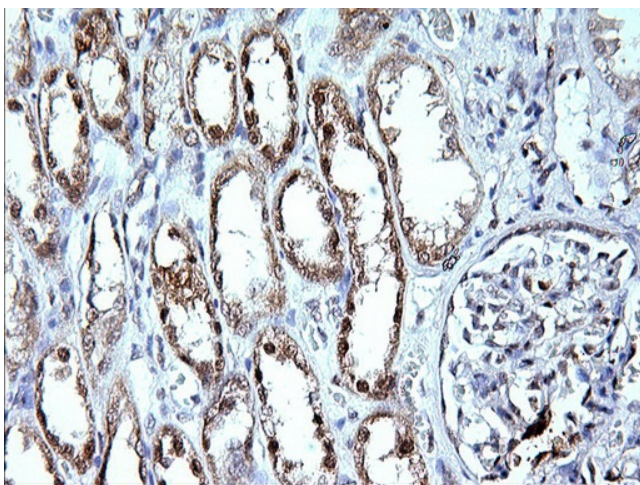
ELISA: Adenylate Kinase 1 Antibody



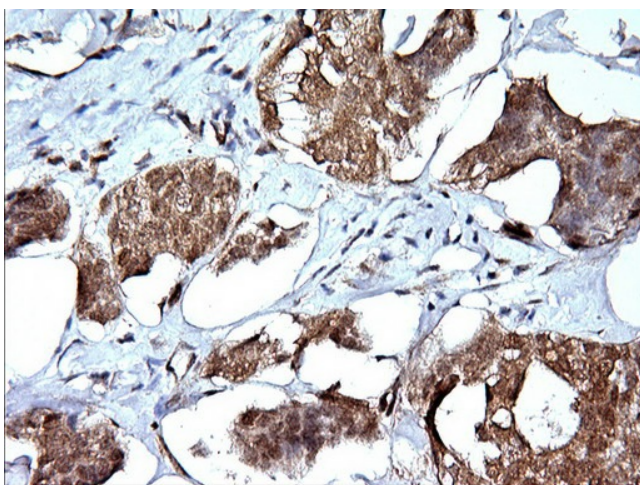
Western blot analysis of extracts (35ug) from 9 different cell lines by using anti-AK1 polyclonal antibody (HepG2: human; HeLa: human; SVT2: mouse; A549: human; COS7: monkey; Jurkat: human; MDCK: canine; PC12: rat; MCF7: human).



Immunohistochemical staining of paraffin-embedded Carcinoma of Human liver tissue using anti-AK1 rabbit polyclonal antibody. (TA590022)



Immunohistochemical staining of paraffin-embedded Human Kidney tissue using anti-AK1 rabbit polyclonal antibody. (TA590022)



Immunohistochemical staining of paraffin-embedded Adenocarcinoma of Human breast tissue using anti-AK1 rabbit polyclonal antibody. (TA590022)