

Product datasheet for **TA590020**

PON1 Rabbit Polyclonal Antibody

Product data:

| | |
|-----------------------|---|
| Product Type: | Primary Antibodies |
| Applications: | ELISA, IF, IHC, WB |
| Recommended Dilution: | WB 1:5000~20000, IHC 1:150, IF 1:500, ELISA 1:100-1:2000 |
| Reactivity: | Human, Dog, Rat |
| Host: | Rabbit |
| Isotype: | IgG |
| Clonality: | Polyclonal |
| Immunogen: | DNA immunization. This antibody is specific for the N Terminus Region of the target protein. |
| Formulation: | 20 mM Potassium Phosphate, 150 mM Sodium Chloride, pH 7.0 |
| Concentration: | 1 mg/ml |
| Purification: | Purified from mouse ascites fluids or tissue culture supernatant by affinity chromatography (protein A/G) |
| Conjugation: | Unconjugated |
| Storage: | Store at -20°C as received. |
| Stability: | Stable for 12 months from date of receipt. |
| Gene Name: | paraoxonase 1 |
| Database Link: | NP_000437 Entrez Gene 84024 Rat Entrez Gene 475234 Dog Entrez Gene 5444 Human P27169 |
| Background: | The enzyme encoded by this gene is an arylesterase that mainly hydrolyzes paroxon to produce p-nitrophenol. Paroxon is an organophosphorus anticholinesterase compound that is produced in vivo by oxidation of the insecticide parathion. Polymorphisms in this gene are a risk factor in coronary artery disease. The gene is found in a cluster of three related paraoxonase genes at 7q21.3. [provided by RefSeq] |
| Synonyms: | ESA; MVCD5; PON |
| Note: | This antibody was generated by SDIX's Genomic Antibody Technology® (GAT). Learn about GAT |

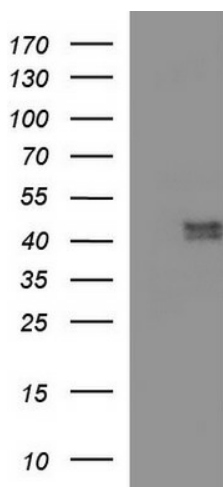


[View online »](#)

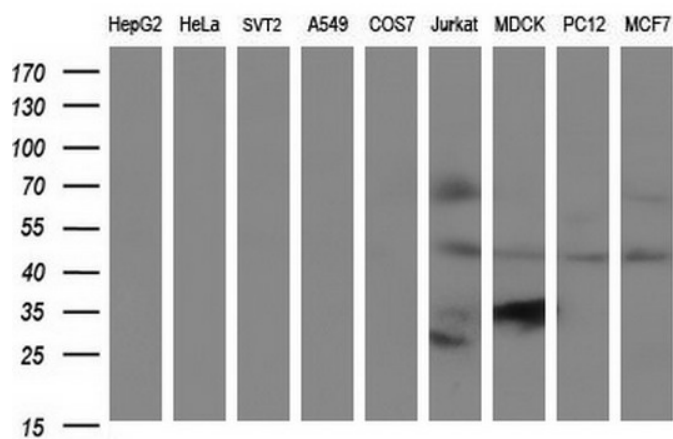
Protein Families: Druggable Genome, Secreted Protein

Protein Pathways: Metabolic pathways

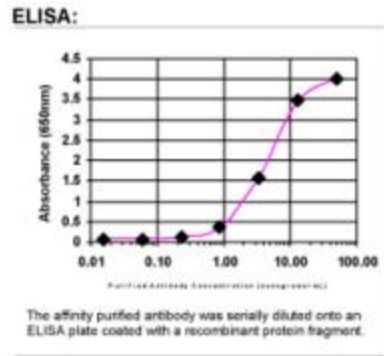
Product images:



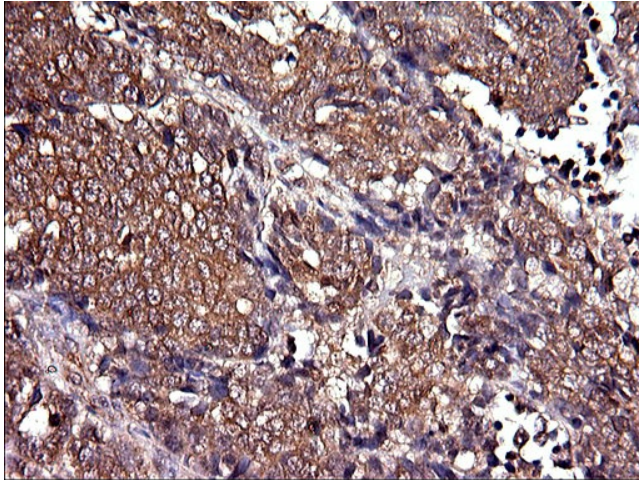
HEK293T cells were transfected with the pCMV6-ENTRY control (Left lane) or pCMV6-ENTRY PON1 ([RC210356], Right lane) cDNA for 48 hrs and lysed. Equivalent amounts of cell lysates (5 ug per lane) were separated by SDS-PAGE and immunoblotted with anti-PON1. Positive lysates [LY400156] (100ug) and [LC400156] (20ug) can be purchased separately from OriGene.



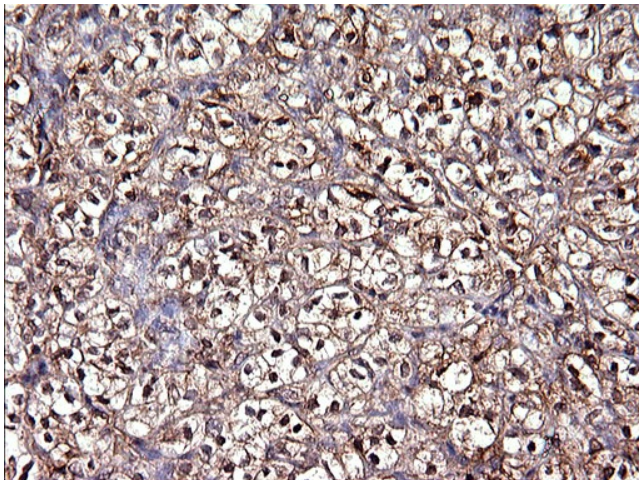
Western blot analysis of extracts (35ug) from 9 different cell lines by using anti-PON1 polyclonal antibody (HepG2: human; HeLa: human; SVT2: mouse; A549: human; COS7: monkey; Jurkat: human; MDCK: canine; PC12: rat; MCF7: human).



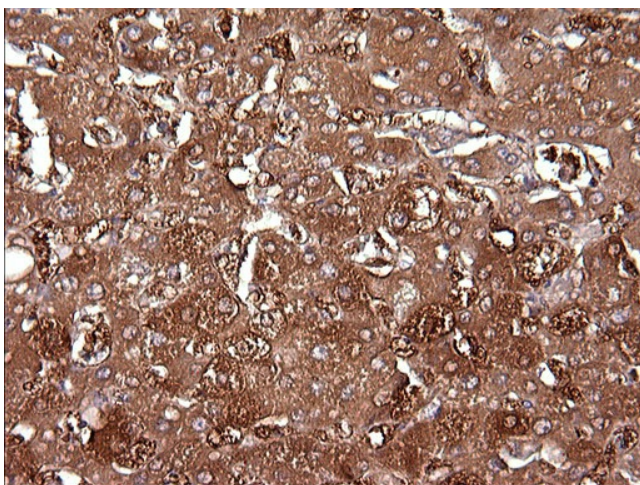
ELISA: PON1 Antibody



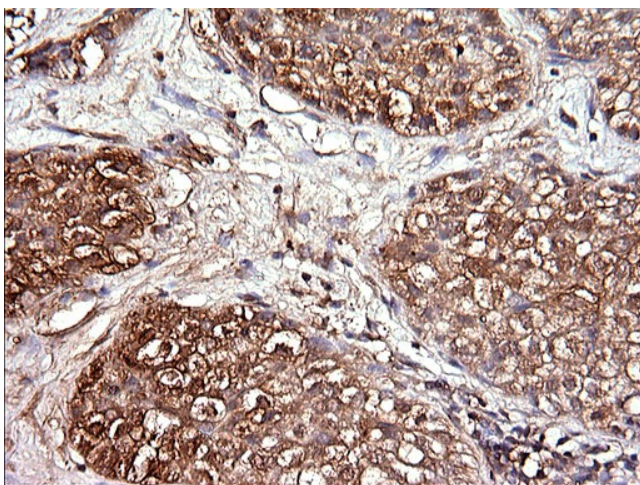
Immunohistochemical staining of paraffin-embedded Adenocarcinoma of Human colon tissue using anti-PON1 rabbit polyclonal antibody. (TA590020)



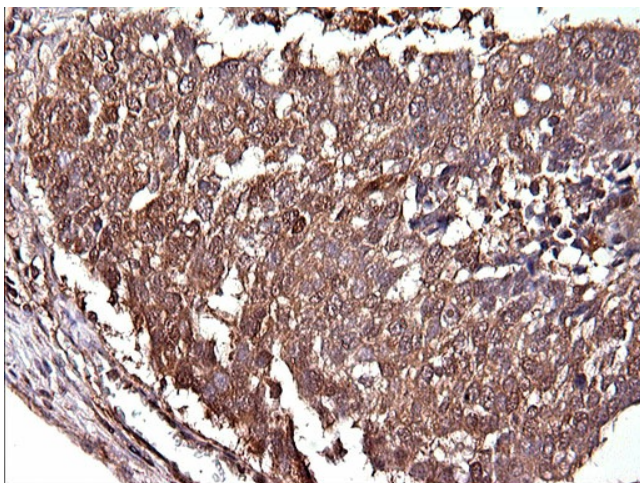
Immunohistochemical staining of paraffin-embedded Carcinoma of Human kidney tissue using anti-PON1 rabbit polyclonal antibody. (TA590020)



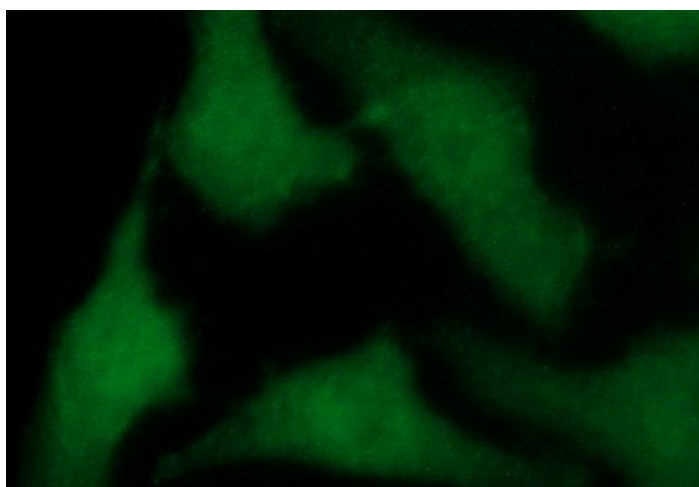
Immunohistochemical staining of paraffin-embedded Human liver tissue using anti-PON1 rabbit polyclonal antibody. (TA590020)



Immunohistochemical staining of paraffin-embedded Carcinoma of Human liver tissue using anti-PON1 rabbit polyclonal antibody. (TA590020)



Immunohistochemical staining of paraffin-embedded Carcinoma of Human lung tissue using anti-PON1 rabbit polyclonal antibody. (TA590020)



Immunofluorescent staining of HeLa cells using anti-PON1 rabbit polyclonal antibody (TA590020).