

Product datasheet for **TA590017**

Hamartin (TSC1) Rabbit Polyclonal Antibody

Product data:

Product Type:	Primary Antibodies
Applications:	ELISA, WB
Recommended Dilution:	WB 1:20000,ELISA 1:100-1:2000
Reactivity:	Human
Host:	Rabbit
Isotype:	IgG
Clonality:	Polyclonal
Immunogen:	DNA immunization. This antibody is specific for the Middle Region of the target protein.
Formulation:	20 mM Potassium Phosphate, 150 mM Sodium Chloride, pH 7.0
Concentration:	0.77mg/ml
Purification:	Purified from mouse ascites fluids or tissue culture supernatant by affinity chromatography (protein A/G)
Conjugation:	Unconjugated
Storage:	Store at -20°C as received.
Stability:	Stable for 12 months from date of receipt.
Gene Name:	TSC complex subunit 1
Database Link:	NP_000359 Entrez Gene 7248 Human Q92574
Background:	Tuberous sclerosis complexes-1 (TSC1 also known as Hamartin) is a tumor suppressor that form a complex with TSC2 (Tuberin. This complex is known to control various cellular functions including cell cycle, endocytosis, adhesion, and transcription (1). The TSC1/TSC2 complex inhibits phosphorylation of S6kinase and 4E-BP1 through inactivation of mTOR (2). Recently it has been shown that TSC1/Hamartin is localized to the centrosome and negatively regulates Plk1 implicating TSC1/hamartin to the regulation of centrosome duplication (3). Tuberous sclerosis (TSC), an autosomal dominant disorder that affects 1 in 6000 individuals, is caused by a mutation in either the TSC1 or TSC2 tumor suppressor gene.
Synonyms:	LAM; TSC

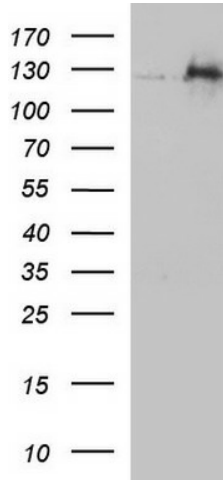


[View online »](#)

Note: This antibody was generated by SDIX's Genomic Antibody Technology® (GAT). [Learn about GAT](#)

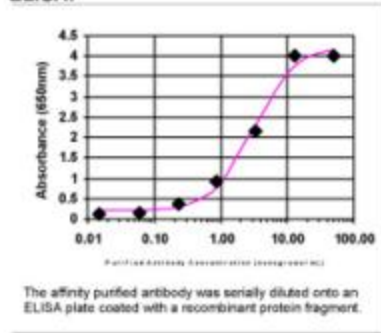
Protein Pathways: Insulin signaling pathway, mTOR signaling pathway

Product images:



HEK293T cells were transfected with the pCMV6-ENTRY control (Left lane) or pCMV6-ENTRY TSC1 ([RC213332], Right lane) cDNA for 48 hrs and lysed. Equivalent amounts of cell lysates (5 ug per lane) were separated by SDS-PAGE and immunoblotted with anti-TSC1. Positive lysates [LY400132] (100ug) and [LC400132] (20ug) can be purchased separately from OriGene.

ELISA:



ELISA: TSC1 Antibody