

Product datasheet for **TA590015**

NM23A (NME1) Rabbit Polyclonal Antibody

Product data:

Product Type:	Primary Antibodies
Applications:	ELISA, IHC, WB
Recommended Dilution:	WB 1:20000, IHC 1:150,ELISA 1:100-1:2000
Reactivity:	Human
Host:	Rabbit
Isotype:	IgG
Clonality:	Polyclonal
Immunogen:	DNA immunization. This antibody is specific for the Middle Region of the target protein.
Formulation:	20 mM Potassium Phosphate, 150 mM Sodium Chloride, pH 7.0
Concentration:	0.85mg/ml
Purification:	Purified from mouse ascites fluids or tissue culture supernatant by affinity chromatography (protein A/G)
Conjugation:	Unconjugated
Storage:	Store at -20°C as received.
Stability:	Stable for 12 months from date of receipt.
Gene Name:	NME/NM23 nucleoside diphosphate kinase 1
Database Link:	NP_000260 Entrez Gene 4830 Human P15531
Background:	This gene (NME1) was identified because of its reduced mRNA transcript levels in highly metastatic cells. Nucleoside diphosphate kinase (NDK) exists as a hexamer composed of 'A' (encoded by this gene) and 'B' (encoded by NME2) isoforms. Mutations in this gene have been identified in aggressive neuroblastomas. Two transcript variants encoding different isoforms have been found for this gene. Co-transcription of this gene and the neighboring downstream gene (NME2) generates naturally-occurring transcripts (NME1-NME2), which encodes a fusion protein comprised of sequence sharing identity with each individual gene product.
Synonyms:	AWD; GAAD; NB; NBS; NDKA; NDPK-A; NDPKA; NM23; NM23-H1



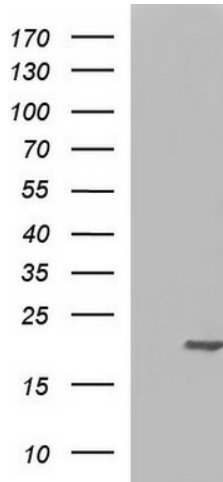
[View online »](#)

Note: This antibody was generated by SDIX's Genomic Antibody Technology® (GAT). [Learn about GAT](#)

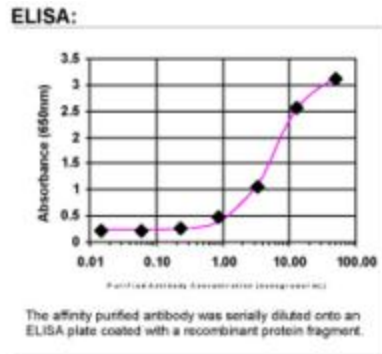
Protein Families: Druggable Genome, Stem cell - Pluripotency

Protein Pathways: Metabolic pathways, Purine metabolism, Pyrimidine metabolism

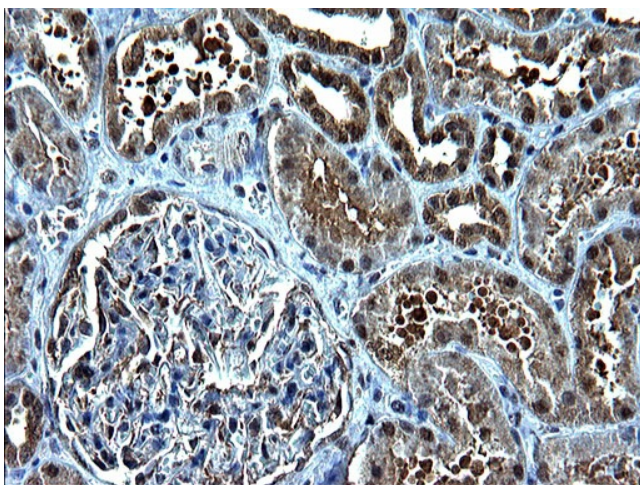
Product images:



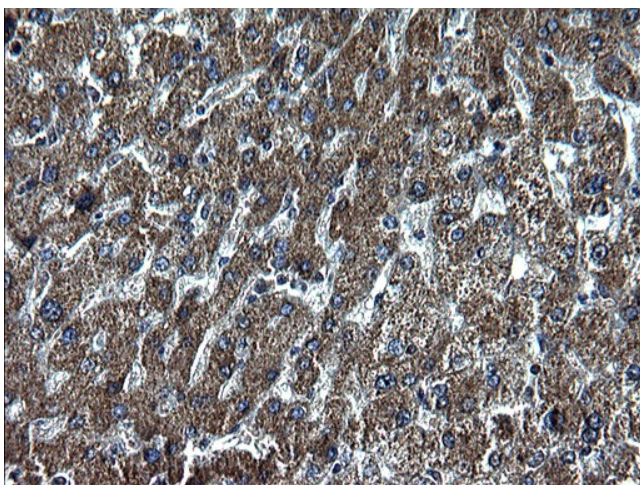
HEK293T cells were transfected with the pCMV6-ENTRY control (Cat# [PS100001], Left lane) or pCMV6-ENTRY NME1 (Cat# [RC201731], Right lane) cDNA for 48 hrs and lysed. Equivalent amounts of cell lysates (5 ug per lane) were separated by SDS-PAGE and immunoblotted with anti-NME1 (Cat# TA590015). Positive lysates [LY400102] (100ug) and [LC400102] (20ug) can be purchased separately from OriGene.



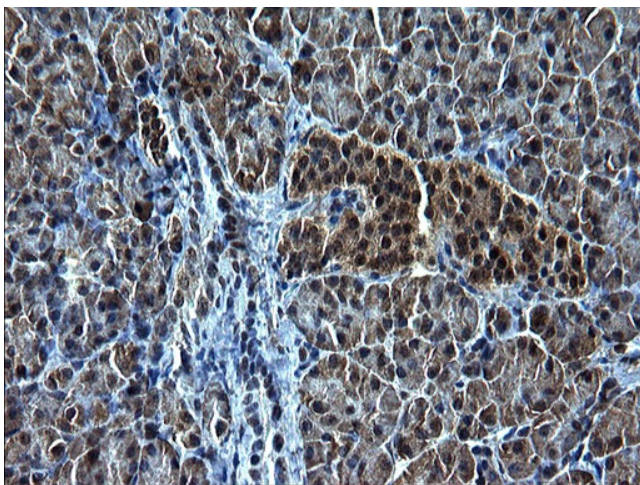
ELISA: Nm23A Antibody



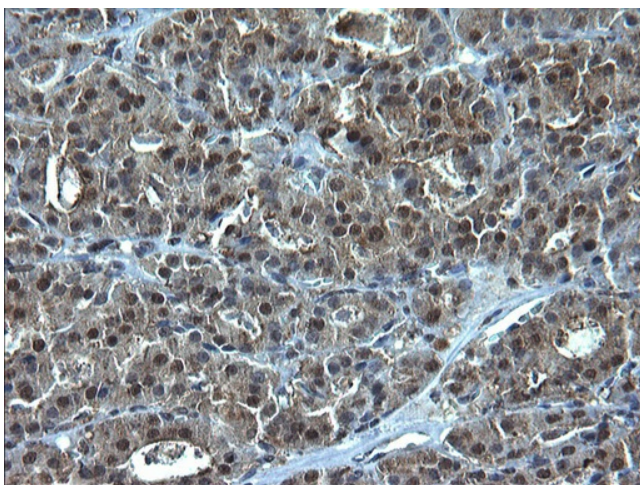
Immunohistochemical staining of paraffin-embedded Human Kidney tissue using anti-NME1 Rabbit Polyclonal antibody. (TA590015)



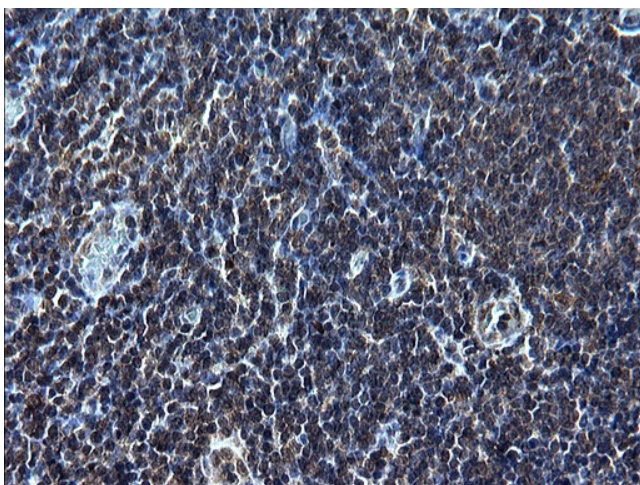
Immunohistochemical staining of paraffin-embedded Human liver tissue using anti-NME1 Rabbit Polyclonal antibody. (TA590015)



Immunohistochemical staining of paraffin-embedded Human pancreas tissue using anti-NME1 Rabbit Polyclonal antibody. (TA590015)



Immunohistochemical staining of paraffin-embedded Carcinoma of Human thyroid tissue using anti-NME1 Rabbit Polyclonal antibody. (TA590015)



Immunohistochemical staining of paraffin-embedded Human lymph node tissue using anti-NME1 Rabbit Polyclonal antibody. (TA590015)