

Product datasheet for **TA590013**

MLH1 Rabbit Polyclonal Antibody

Product data:

Product Type:	Primary Antibodies
Applications:	ELISA, IHC, WB
Recommended Dilution:	WB 1:20000, IHC 1:150,ELISA 1:100-1:2000
Reactivity:	Human
Host:	Rabbit
Isotype:	IgG
Clonality:	Polyclonal
Immunogen:	DNA immunization. This antibody is specific for the Middle Region of the target protein.
Formulation:	20 mM Potassium Phosphate, 150 mM Sodium Chloride, pH 7.0
Concentration:	0.72mg/ml
Purification:	Purified from mouse ascites fluids or tissue culture supernatant by affinity chromatography (protein A/G)
Conjugation:	Unconjugated
Storage:	Store at -20°C as received.
Stability:	Stable for 12 months from date of receipt.
Gene Name:	mutL homolog 1
Database Link:	NP_000240 Entrez Gene 4292 Human P40692



[View online »](#)

Background:

MLH1 is a DNA mismatch repair protein. The repair of mismatch DNA is essential to maintaining the integrity of genetic information over time. An alteration of microsatellite repeats is the result of slippage owing to strand misalignment during DNA replication and is referred to as microsatellite instability (MSI). These defects in DNA repair pathways have been related to human carcinogenesis. The importance of mismatch repair genes became apparent with the identification of the genetic basis for hereditary nonpolyposis colon cancer (HNPCC). MSHS2 is involved in the initial cognition of mismatch nucleotides during the replication mismatch repair process. It is thought that after MSH2 binds to a mismatched DNA duplex it is joined by a heterodimer of MLH1 and PMSH, which together help facilitate the later steps in mismatch repair.

Synonyms:

COCA2; FCC2; hMLH1; HNPCC; HNPCC2; MMRCS1

Note:

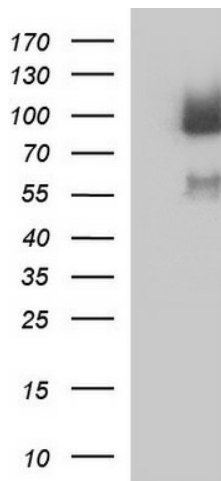
This antibody was generated by SDIX's Genomic Antibody Technology® (GAT). [Learn about GAT](#)

Protein Families:

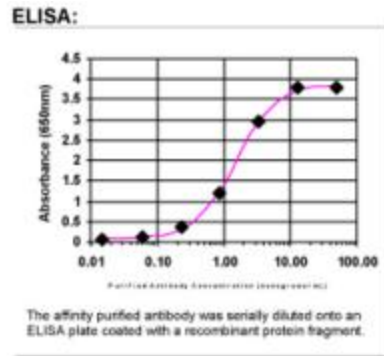
Druggable Genome

Protein Pathways:

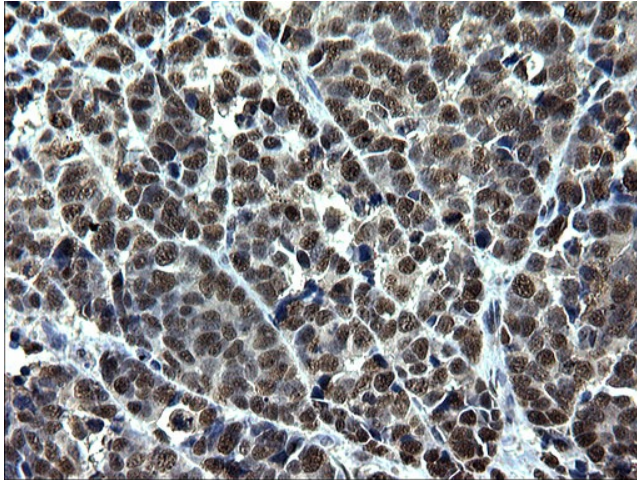
Colorectal cancer, Endometrial cancer, Mismatch repair, Pathways in cancer

Product images:

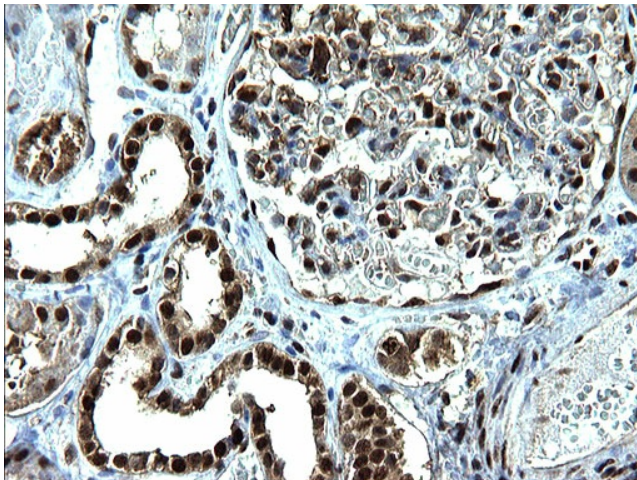
HEK293T cells were transfected with the pCMV6-ENTRY control (Left lane) or pCMV6-ENTRY MLH1 ([RC201607], Right lane) cDNA for 48 hrs and lysed. Equivalent amounts of cell lysates (5 ug per lane) were separated by SDS-PAGE and immunoblotted with anti-MLH1. Positive lysates [LY400096] (100ug) and [LC400096] (20ug) can be purchased separately from OriGene.



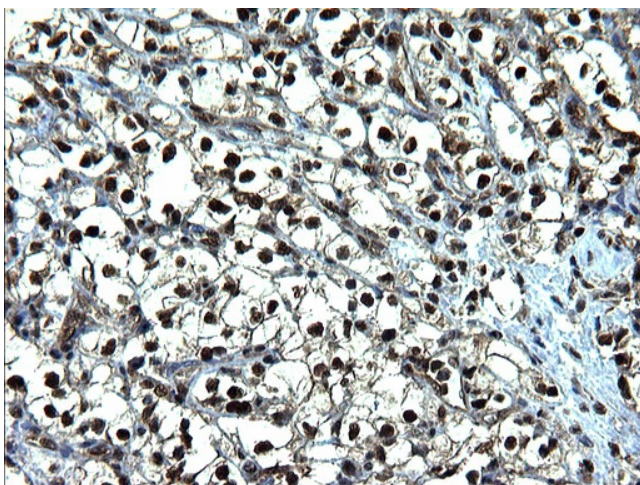
ELISA: MLH1 Antibody



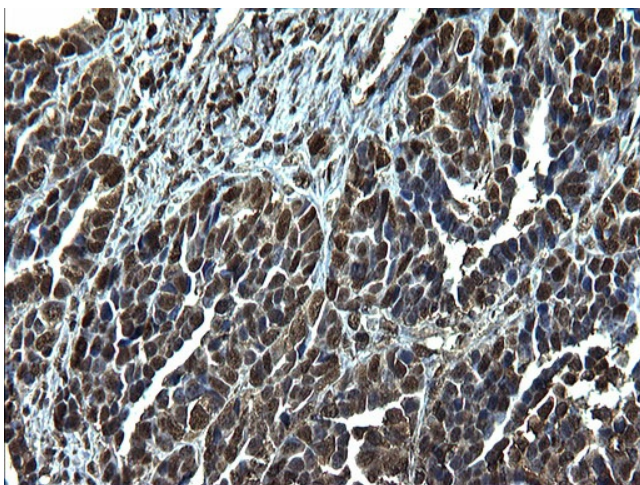
Immunohistochemical staining of paraffin-embedded Adenocarcinoma of Human colon tissue using anti-MLH1 rabbit polyclonal antibody. (TA590013)



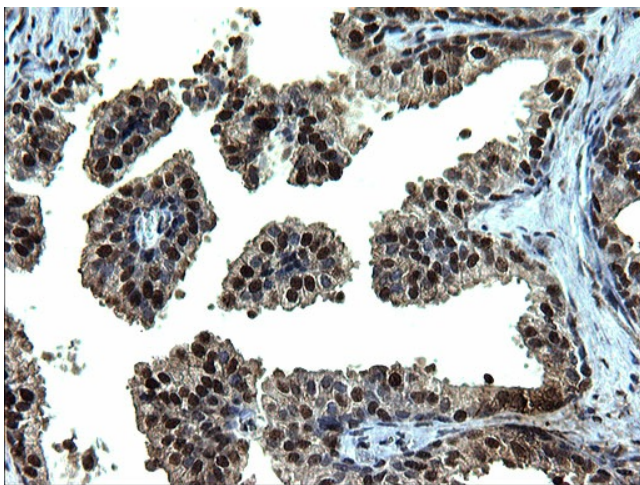
Immunohistochemical staining of paraffin-embedded Human Kidney tissue using anti-MLH1 rabbit polyclonal antibody. (TA590013)



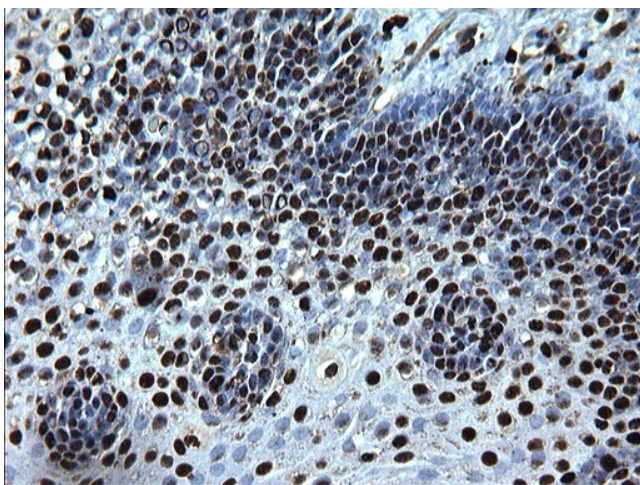
Immunohistochemical staining of paraffin-embedded Carcinoma of Human kidney tissue using anti-MLH1 rabbit polyclonal antibody. (TA590013)



Immunohistochemical staining of paraffin-embedded Adenocarcinoma of Human ovary tissue using anti-MLH1 rabbit polyclonal antibody. (TA590013)



Immunohistochemical staining of paraffin-embedded Human prostate tissue using anti-MLH1 rabbit polyclonal antibody. (TA590013)



Immunohistochemical staining of paraffin-embedded Human lymph node tissue using anti-MLH1 rabbit polyclonal antibody. (TA590013)