

## Product datasheet for **TA590010**

### FH Rabbit Polyclonal Antibody

#### Product data:

Product Type:	Primary Antibodies
Applications:	ELISA, IF, IHC, WB
Recommended Dilution:	WB 1:20000, IHC 1:150, ELISA 1:100-1:2000
Reactivity:	Human
Host:	Rabbit
Isotype:	IgG
Clonality:	Polyclonal
Immunogen:	DNA immunization. This antibody is specific for the Middle Region of the target protein.
Formulation:	20 mM Potassium Phosphate, 150 mM Sodium Chloride, pH 7.0
Concentration:	0.79mg/ml
Purification:	Purified from mouse ascites fluids or tissue culture supernatant by affinity chromatography (protein A/G)
Conjugation:	Unconjugated
Storage:	Store at -20°C as received.
Stability:	Stable for 12 months from date of receipt.
Gene Name:	fumarate hydratase
Database Link:	<a href="#">NP_000134</a> <a href="#">Entrez Gene 2271 Human P07954</a>
Background:	The protein encoded by this gene is an enzymatic component of the tricarboxylic acid (TCA) cycle, or Krebs cycle, and catalyzes the formation of L-malate from fumarate. It exists in both a cytosolic form and an N-terminal extended form, differing only in the translation start site used. The N-terminal extended form is targeted to the mitochondrion, where the removal of the extension generates the same form as in the cytoplasm. It is similar to some thermostable class II fumarases and functions as a homotetramer. Mutations in this gene can cause fumarase deficiency and lead to progressive encephalopathy.
Synonyms:	FMRD; HLRCC; LRCC; MCL; MCUL1



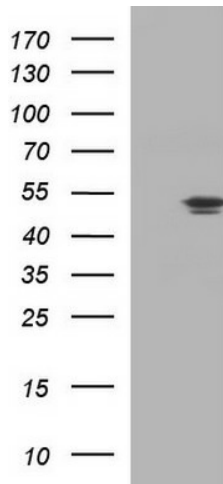
[View online »](#)

**Note:** This antibody was generated by SDIX's Genomic Antibody Technology® (GAT). [Learn about GAT](#)

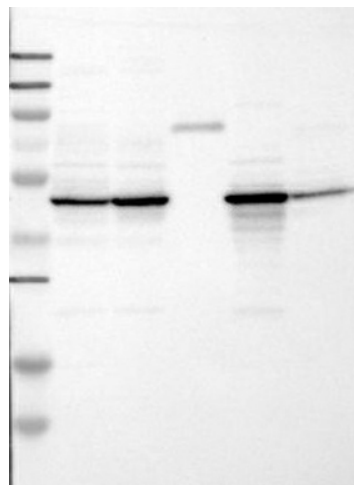
**Protein Families:** Druggable Genome

**Protein Pathways:** Citrate cycle (TCA cycle), Metabolic pathways, Pathways in cancer, Renal cell carcinoma

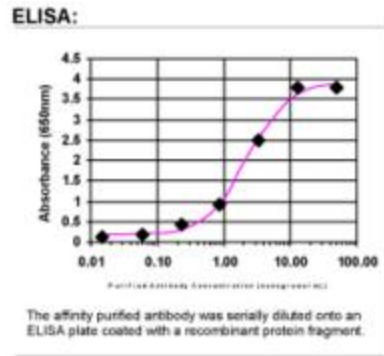
**Product images:**



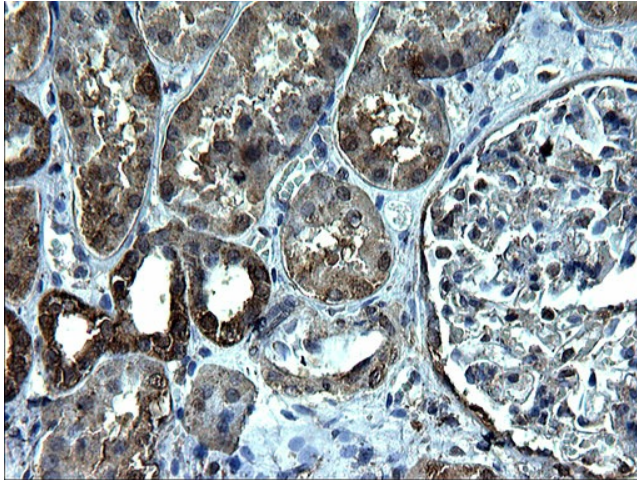
HEK293T cells were transfected with the pCMV6-ENTRY control (Left lane) or pCMV6-ENTRY FH ([RC200614], Right lane) cDNA for 48 hrs and lysed. Equivalent amounts of cell lysates (5 ug per lane) were separated by SDS-PAGE and immunoblotted with anti-FH. Positive lysates [LY400053] (100ug) and [LC400053] (20ug) can be purchased separately from OriGene.



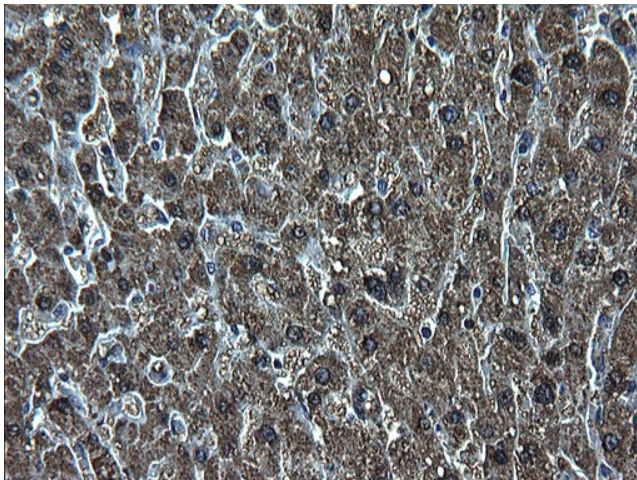
Lane 1: Marker [kDa] 250, 130, 95, 72, 55, 36, 28, 17, 11; Lane 2: RT-4; Lane 3: U-251 MG; Lane 4: Human Plasma; Lane 5: Liver; Lane 6: Tonsil. This validation was performed by Protein Atlas and the presentation of data is for informational purposes only.



ELISA: Fumarase Antibody

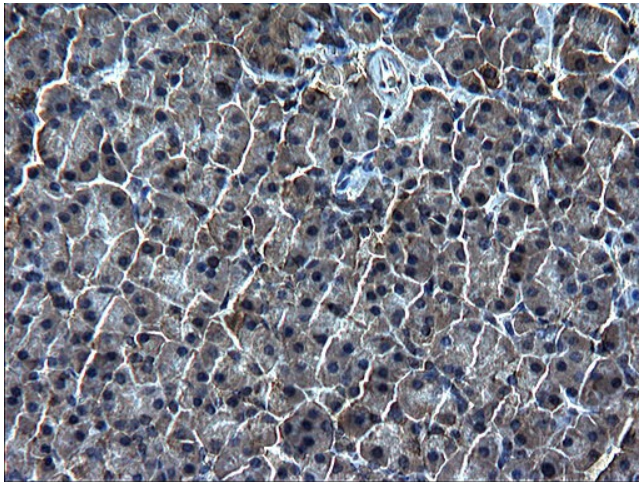


Immunohistochemical staining of paraffin-embedded Human Kidney tissue using anti-FH Rabbit Polyclonal antibody. (TA590010)

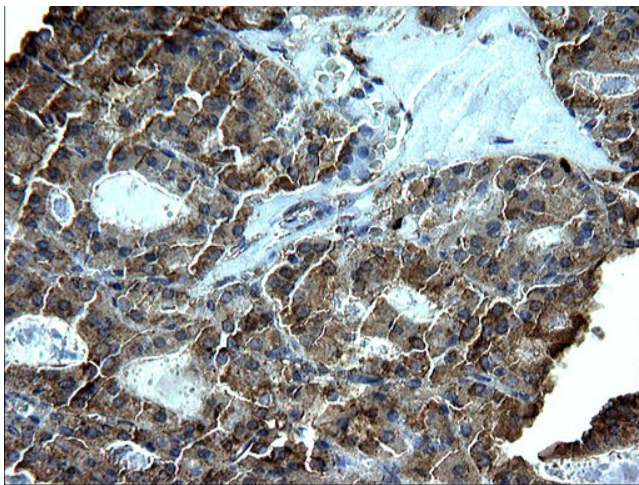


Immunohistochemical staining of paraffin-embedded Human liver tissue using anti-FH Rabbit Polyclonal antibody. (TA590010)

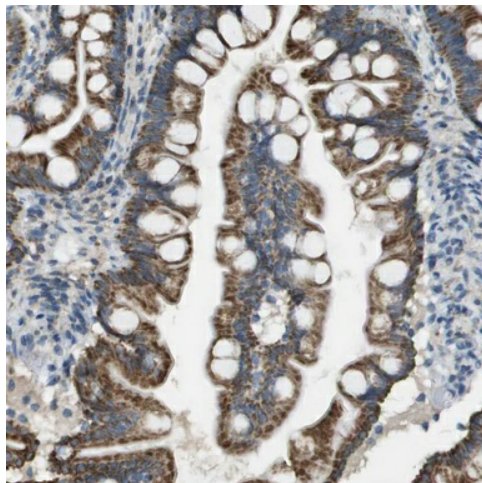




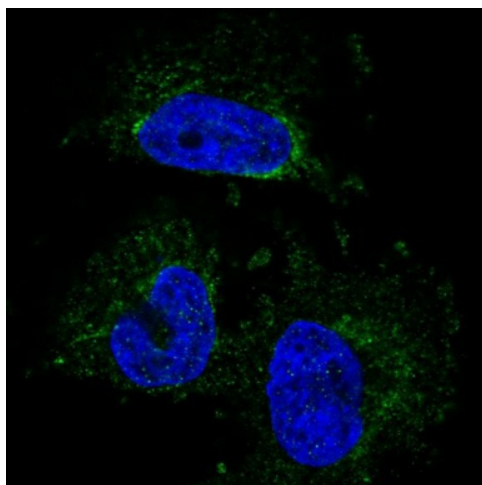
Immunohistochemical staining of paraffin-embedded Human pancreas tissue using anti-FH Rabbit Polyclonal antibody. (TA590010)



Immunohistochemical staining of paraffin-embedded Carcinoma of Human thyroid tissue using anti-FH Rabbit Polyclonal antibody. (TA590010)



Immunohistochemical staining of human small intestine shows strong cytoplasmic positivity with a granular pattern in glandular cells. This validation was performed by Protein Atlas and the presentation of data is for informational purposes only.



Immunofluorescent staining of human cell line U-251 MG shows positivity in cytoplasm. This validation was performed by Protein Atlas and the presentation of data is for informational purposes only.