

Product datasheet for **TA590006**

Endothelin B Receptor (EDNRB) Rabbit Polyclonal Antibody

Product data:

Product Type:	Primary Antibodies
Applications:	ELISA, IF, IHC, WB
Recommended Dilution:	WB 1:20000, IHC 1:150, ELISA 1:100-1:2000
Reactivity:	Human
Host:	Rabbit
Isotype:	IgG
Clonality:	Polyclonal
Immunogen:	DNA immunization. This antibody is specific for the N Terminus Region of the target protein.
Formulation:	20 mM Potassium Phosphate, 150 mM Sodium Chloride, pH 7.0
Concentration:	1.1mg/ml
Purification:	Purified from mouse ascites fluids or tissue culture supernatant by affinity chromatography (protein A/G)
Conjugation:	Unconjugated
Storage:	Store at -20°C as received.
Stability:	Stable for 12 months from date of receipt.
Gene Name:	endothelin receptor type B
Database Link:	NP_000106 Entrez Gene 1910 Human P24530



[View online »](#)

Background:

The Endothelin Receptor ETB is expressed in most tissues. Mutations of the receptor gene are responsible for Hirschsprung disease type 2, a multigenic disorder with phenotypes such as bicolored irides, megacolon, hypopigmentation, and hearing loss. The ETB receptor has similar affinity for all three endothelins and activates a phosphatidylinositol-calcium second messenger system. A splice variant, termed SVR, has been described; the sequence of the ETB-SVR receptor is identical to ET-B receptor, with the exception of the intracellular C-terminal domain. While both splice variants bind endothelin ET1, they exhibit different responses, which suggests that they may be functionally distinct. The endothelin B receptor has been reported to be expressed in adrenal, aorta, artery, brain, breast, eye, epididymis, ganglion, heart, kidney, liver, lung, ovary, placenta, prostate, skin, testis, uterus, and vessel. ESTs have been isolated from amnion, B-cell/lung/testis, breast, brain, colon, ear, embryo, eye, heart, kidney, liver, liver/spleen, lung, lymph node, placenta, prostate, and skin libraries.

Synonyms:

ABCDS; ET-B; ET-BR; ETB; ETBR; ETRB; HSCR; HSCR2; WS4A

Note:

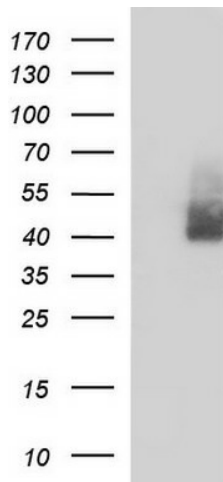
This antibody was generated by SDIX's Genomic Antibody Technology® (GAT). [Learn about GAT](#)

Protein Families:

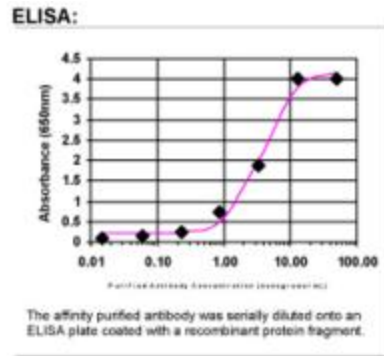
Druggable Genome, GPCR, Transmembrane

Protein Pathways:

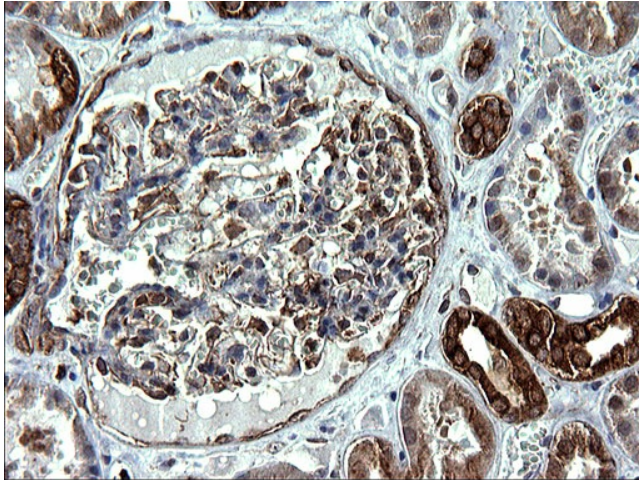
Calcium signaling pathway, Melanogenesis, Neuroactive ligand-receptor interaction

Product images:

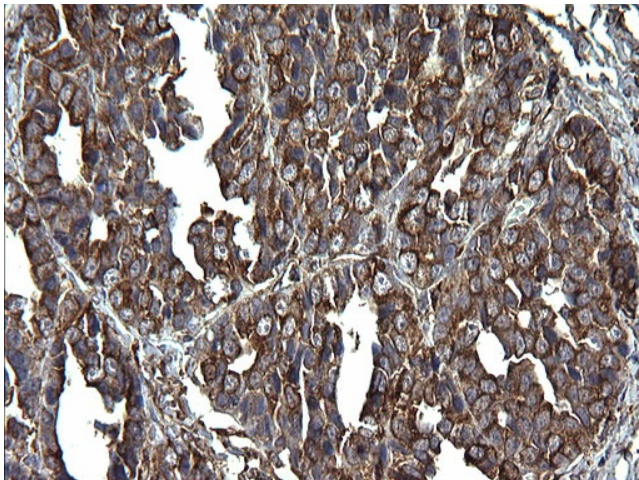
HEK293T cells were transfected with the pCMV6-ENTRY control (Cat# [PS100001], Left lane) or pCMV6-ENTRY EDNRB (Cat# [RC204899], Right lane) cDNA for 48 hrs and lysed. Equivalent amounts of cell lysates (5 ug per lane) were separated by SDS-PAGE and immunoblotted with anti-EDNRB (Cat# TA590006). Positive lysates [LY400037] (100ug) and [LC400037] (20ug) can be purchased separately from OriGene.



ELISA: Endothelin B Receptor Antibody



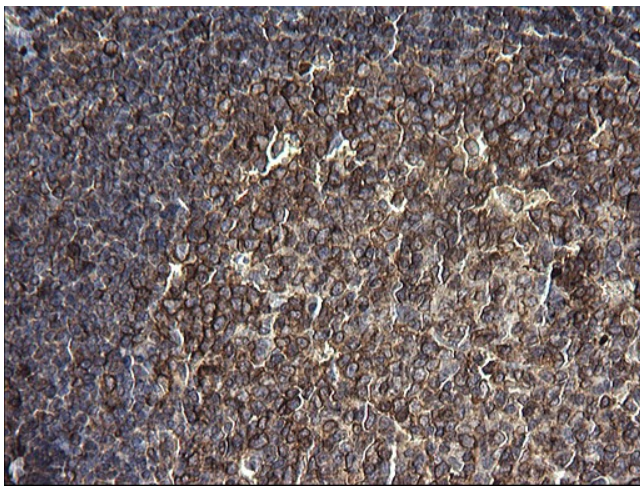
Immunohistochemical staining of paraffin-embedded Human Kidney tissue using anti-EDNRB rabbit polyclonal antibody. (TA590006)



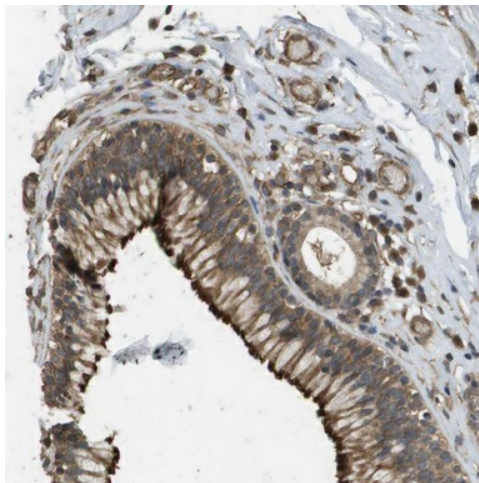
Immunohistochemical staining of paraffin-embedded Adenocarcinoma of Human ovary tissue using anti-EDNRB rabbit polyclonal antibody. (TA590006)



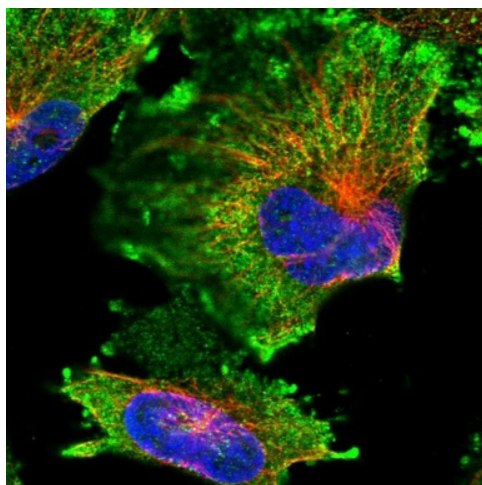
Immunohistochemical staining of paraffin-embedded Human endometrium tissue using anti-EDNRB rabbit polyclonal antibody. (TA590006)



Immunohistochemical staining of paraffin-embedded Human lymph node tissue using anti-EDNRB rabbit polyclonal antibody. (TA590006)



Immunohistochemical staining of human nasopharynx shows strong cytoplasmic and membranous positivity in respiratory epithelial cells. This validation was performed by Protein Atlas and the presentation of data is for informational purposes only.



Immunofluorescent staining of human cell line U-251 MG shows positivity in plasma membrane & cytoplasm. This validation was performed by Protein Atlas and the presentation of data is for informational purposes only.