

## Product datasheet for **TA590004**

### SERPING1 Rabbit Polyclonal Antibody

#### Product data:

Product Type:	Primary Antibodies
Applications:	ELISA
Recommended Dilution:	ELISA: 1:100-1:2000
Reactivity:	Human
Host:	Rabbit
Isotype:	IgG
Clonality:	Polyclonal
Immunogen:	DNA immunization. This antibody is specific for the N Terminus Region of the target protein.
Formulation:	20 mM Potassium Phosphate, 150 mM Sodium Chloride, pH 7.0
Concentration:	0.70146 mg/ml
Purification:	Purified from mouse ascites fluids or tissue culture supernatant by affinity chromatography (protein A/G)
Conjugation:	Unconjugated
Storage:	Store at -20°C as received.
Stability:	Stable for 12 months from date of receipt.
Gene Name:	serpin family G member 1
Database Link:	<a href="#">NP_000053</a> <a href="#">Entrez Gene 710 Human P05155</a>
Background:	C1-inhibitor (C1INH) functions as a regulator of the activation of the classical complement pathway and of the contact activation system of kinin generation and coagulation. Its primary biologically relevant target proteinases are C1r, C1s, coagulation factors XIa and XIIa, and plasma kallikrein. C1-inhibitor consists of one polypeptide chain and has a molecular mass of 104 kDa (1,2). Serum concentration has been determined to 180 ug/ml (2).
Synonyms:	C1IN; C1INH; C1NH; HAE1; HAE2
Note:	This antibody was generated by SDIX's Genomic Antibody Technology® (GAT). <a href="#">Learn about GAT</a>

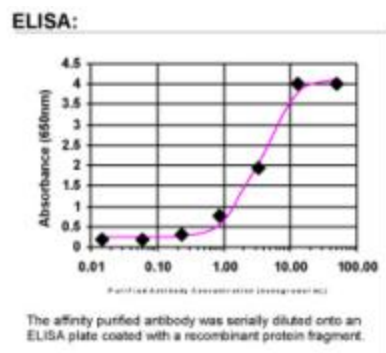


[View online »](#)

Protein Families: Druggable Genome, Secreted Protein

Protein Pathways: Complement and coagulation cascades

### Product images:



ELISA: C1 Inactivator Antibody