

## Product datasheet for **TA507395**

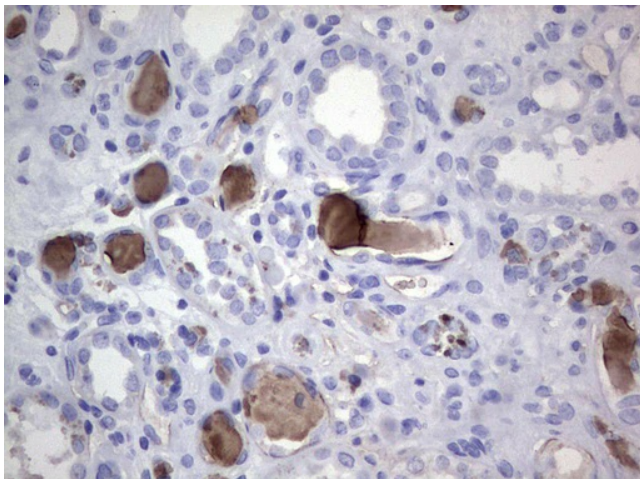
### **FAIM3 (FCMR) Mouse Monoclonal Antibody [Clone ID: OT1E6]**

#### **Product data:**

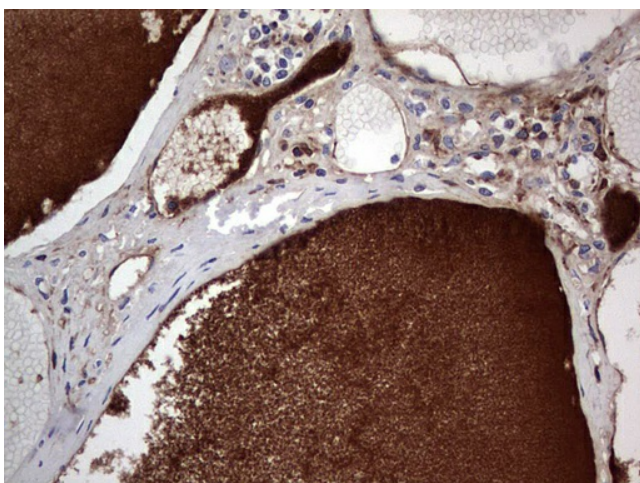
Product Type:	Primary Antibodies
Clone Name:	OT1E6
Applications:	IHC
Recommended Dilution:	IHC 1:150
Reactivity:	Human
Host:	Mouse
Isotype:	IgG1
Clonality:	Monoclonal
Immunogen:	Full length human recombinant protein of human FAIM3 (NP_005440) produced in HEK293 Cells.
Formulation:	PBS (pH 7.3) containing 1% BSA, 50% glycerol and 0.02% sodium azide.
Concentration:	1 mg/ml
Purification:	Purified from mouse ascites fluids or tissue culture supernatant by affinity chromatography (protein A/G)
Conjugation:	Unconjugated
Storage:	Store at -20°C as received.
Stability:	Stable for 12 months from date of receipt.
Predicted Protein Size:	43 kDa
Gene Name:	Fc fragment of IgM receptor
Database Link:	<a href="#">NP_005440</a> <a href="#">Entrez Gene 9214 Human</a> <a href="#">O60667</a>
Synonyms:	FAIM3; TOSO
Protein Families:	Druggable Genome, Transmembrane



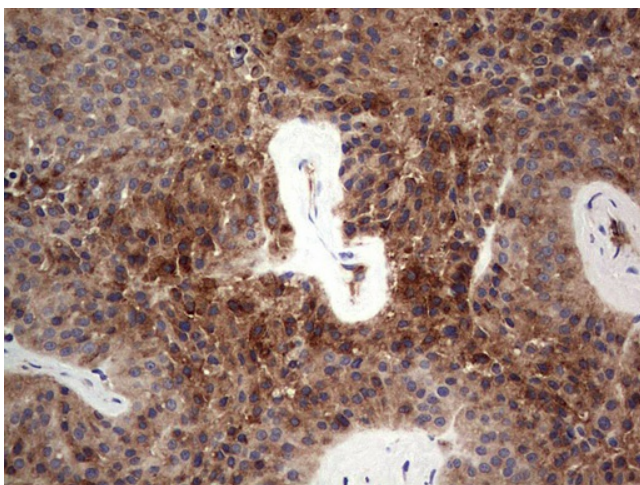
[View online »](#)

**Product images:**

Immunohistochemical staining of paraffin-embedded Human Kidney tissue within the normal limits using anti-FAIM3 mouse monoclonal antibody. (Heat-induced epitope retrieval by 1mM EDTA in 10mM Tris, pH8.5, 120°C for 3min, TA507395)



Immunohistochemical staining of paraffin-embedded Human thyroid tissue within the normal limits using anti-FAIM3 mouse monoclonal antibody. (Heat-induced epitope retrieval by 1mM EDTA in 10mM Tris, pH8.5, 120°C for 3min, TA507395)



Immunohistochemical staining of paraffin-embedded Carcinoma of Human thyroid tissue using anti-FAIM3 mouse monoclonal antibody. (Heat-induced epitope retrieval by 1mM EDTA in 10mM Tris, pH8.5, 120°C for 3min, TA507395)