

Product datasheet for **TA507378M**

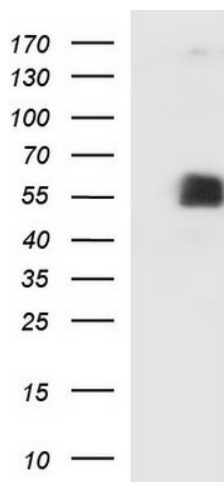
Siglec 7 (SIGLEC7) Mouse Monoclonal Antibody [Clone ID: OTI1A11]

Product data:

Product Type:	Primary Antibodies
Clone Name:	OTI1A11
Applications:	WB
Recommended Dilution:	WB 1:4000
Reactivity:	Human
Host:	Mouse
Isotype:	IgG1
Clonality:	Monoclonal
Immunogen:	Full length human recombinant protein of human SIGLEC7(NP_057627) produced in HEK293T cell.
Formulation:	PBS (pH 7.3) containing 1% BSA, 50% glycerol and 0.02% sodium azide.
Concentration:	1 mg/ml
Purification:	Purified from mouse ascites fluids or tissue culture supernatant by affinity chromatography (protein A/G)
Conjugation:	Unconjugated
Storage:	Store at -20°C as received.
Stability:	Stable for 12 months from date of receipt.
Predicted Protein Size:	41.1 kDa
Gene Name:	sialic acid binding Ig like lectin 7
Database Link:	NP_057627 Entrez Gene 27036 Human Q9Y286
Synonyms:	AIRM1; CD328; CDw328; D-siglec; p75; QA79; SIGLEC-7; SIGLEC19P; SIGLECP2
Protein Families:	Druggable Genome, ES Cell Differentiation/IPS, Transmembrane



[View online »](#)

Product images:

HEK293T cells were transfected with the pCMV6-ENTRY control (Left lane) or pCMV6-ENTRY SIGLEC7 ([RC213691], Right lane) cDNA for 48 hrs and lysed. Equivalent amounts of cell lysates (5 ug per lane) were separated by SDS-PAGE and immunoblotted with anti-SIGLEC7. Positive lysates [LY413916] (100ug) and [LC413916] (20ug) can be purchased separately from OriGene.