

Product datasheet for **TA507377AM**

Siglec 7 (SIGLEC7) Mouse Monoclonal Antibody (Biotin conjugated) [Clone ID: OTI1A1]

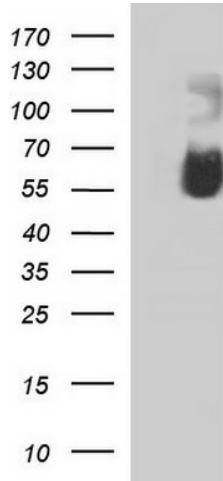
Product data:

| | |
|-------------------------|---|
| Product Type: | Primary Antibodies |
| Clone Name: | OTI1A1 |
| Applications: | WB |
| Recommended Dilution: | WB 1:4000 |
| Reactivity: | Human |
| Host: | Mouse |
| Isotype: | IgG1 |
| Clonality: | Monoclonal |
| Immunogen: | Full length human recombinant protein of human SIGLEC7(NP_057627) produced in HEK293T cell. |
| Formulation: | PBS (pH 7.3) containing 1% BSA, 50% glycerol and 0.02% sodium azide. |
| Concentration: | 0.5 mg/ml |
| Purification: | Purified from mouse ascites fluids or tissue culture supernatant by affinity chromatography (protein A/G) |
| Conjugation: | Biotin |
| Storage: | Store at -20°C as received. |
| Stability: | Stable for 12 months from date of receipt. |
| Predicted Protein Size: | 41.1 kDa |
| Gene Name: | sialic acid binding Ig like lectin 7 |
| Database Link: | NP_057627 Entrez Gene 27036 Human Q9Y286 |
| Synonyms: | AIRM1; CD328; CDw328; D-siglec; p75; QA79; SIGLEC-7; SIGLEC19P; SIGLECP2 |
| Protein Families: | Druggable Genome, ES Cell Differentiation/IPS, Transmembrane |



[View online »](#)

Product images:



HEK293T cells were transfected with the pCMV6-ENTRY control (Cat# [PS100001], Left lane) or pCMV6-ENTRY SIGLEC7 (Cat# [RC213691], Right lane) cDNA for 48 hrs and lysed. Equivalent amounts of cell lysates (5 ug per lane) were separated by SDS-PAGE and immunoblotted with anti-SIGLEC7 (Cat# [TA507377]). Positive lysates [LY413916] (100ug) and [LC413916] (20ug) can be purchased separately from OriGene.