

## Product datasheet for **TA507376AM**

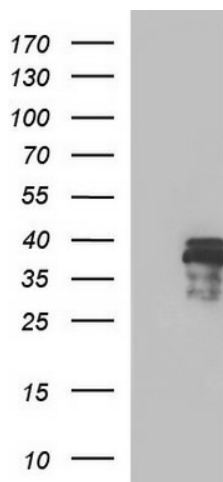
### ZFAND3 Mouse Monoclonal Antibody (Biotin conjugated) [Clone ID: OTI1E9]

#### Product data:

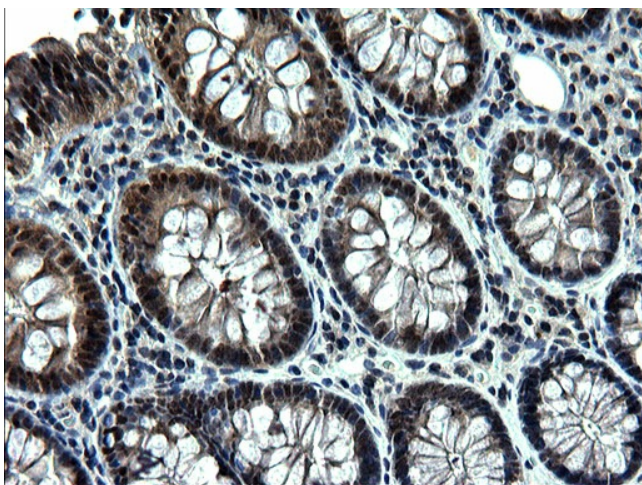
Product Type:	Primary Antibodies
Clone Name:	OTI1E9
Applications:	IHC, WB
Recommended Dilution:	WB 1:4000, IHC 1:150
Reactivity:	Human, Mouse, Rat
Host:	Mouse
Isotype:	IgG1
Clonality:	Monoclonal
Immunogen:	Full length human recombinant protein of human ZFAND3(NP_068762) produced in HEK293T cell.
Formulation:	PBS (pH 7.3) containing 1% BSA, 50% glycerol and 0.02% sodium azide.
Concentration:	0.5 mg/ml
Purification:	Purified from mouse ascites fluids or tissue culture supernatant by affinity chromatography (protein A/G)
Conjugation:	Biotin
Storage:	Store at -20°C as received.
Stability:	Stable for 12 months from date of receipt.
Predicted Protein Size:	25 kDa
Gene Name:	zinc finger AN1-type containing 3
Database Link:	<a href="#">NP_068762</a> <a href="#">Entrez Gene 21769 Mouse</a> <a href="#">Entrez Gene 361816 Rat</a> <a href="#">Entrez Gene 60685 Human</a> <a href="#">Q9H8U3</a>
Synonyms:	TEX27



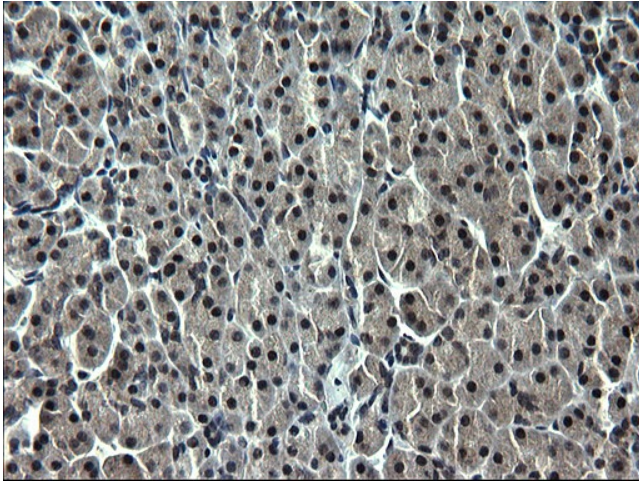
[View online »](#)

**Product images:**

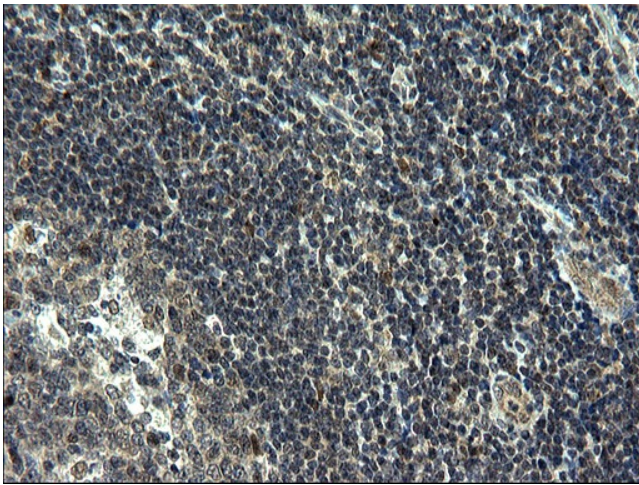
HEK293T cells were transfected with the pCMV6-ENTRY control (Left lane) or pCMV6-ENTRY ZFAND3 ([RC204382], Right lane) cDNA for 48 hrs and lysed. Equivalent amounts of cell lysates (5 ug per lane) were separated by SDS-PAGE and immunoblotted with anti-ZFAND3. Positive lysates [LY411874] (100ug) and [LC411874] (20ug) can be purchased separately from OriGene.



Immunohistochemical staining of paraffin-embedded Human colon tissue within the normal limits using anti-ZFAND3 mouse monoclonal antibody. (Heat-induced epitope retrieval by 1mM EDTA in 10mM Tris, pH8.5, 120°C for 3min, [TA507376])



Immunohistochemical staining of paraffin-embedded Human pancreas tissue within the normal limits using anti-ZFAND3 mouse monoclonal antibody. (Heat-induced epitope retrieval by 1mM EDTA in 10mM Tris, pH8.5, 120°C for 3min, [TA507376])



Immunohistochemical staining of paraffin-embedded Human lymph node tissue within the normal limits using anti-ZFAND3 mouse monoclonal antibody. (Heat-induced epitope retrieval by 1mM EDTA in 10mM Tris, pH8.5, 120°C for 3min, [TA507376])