

Product datasheet for **TA507369S**

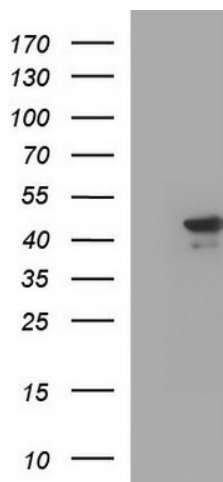
C20orf77 Mouse Monoclonal Antibody [Clone ID: OTI1C7]

Product data:

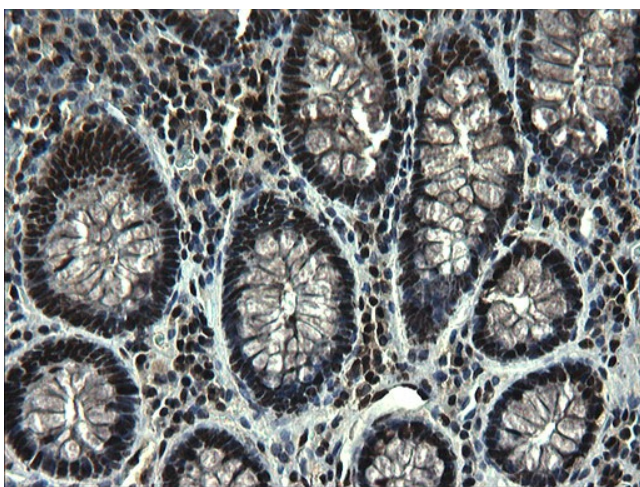
Product Type:	Primary Antibodies
Clone Name:	OTI1C7
Applications:	IHC, WB
Recommended Dilution:	WB 1:4000, IHC 1:150
Reactivity:	Human, Mouse, Rat
Host:	Mouse
Isotype:	IgG1
Clonality:	Monoclonal
Immunogen:	Full length human recombinant protein of human RPRD1B(NP_067038) produced in HEK293T cell.
Formulation:	PBS (pH 7.3) containing 1% BSA, 50% glycerol and 0.02% sodium azide.
Concentration:	1 mg/ml
Purification:	Purified from mouse ascites fluids or tissue culture supernatant by affinity chromatography (protein A/G)
Conjugation:	Unconjugated
Storage:	Store at -20°C as received.
Stability:	Stable for 12 months from date of receipt.
Predicted Protein Size:	36.7 kDa
Database Link:	NP_067038 Entrez Gene 70470 Mouse Entrez Gene 311591 Rat
Synonyms:	C20orf77; CREPT; dj1057B20.2; NET60



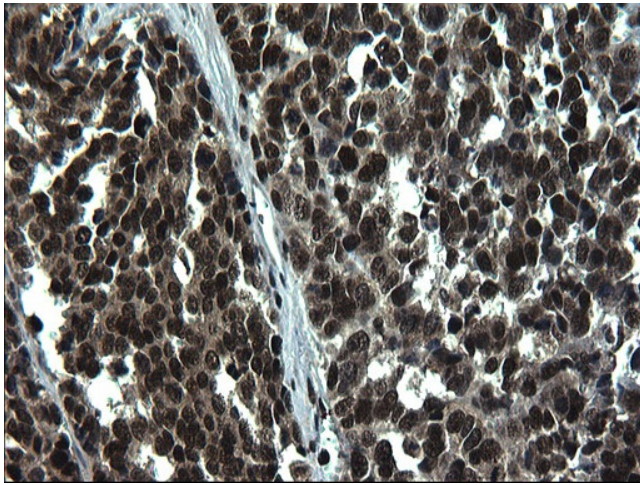
[View online »](#)

Product images:

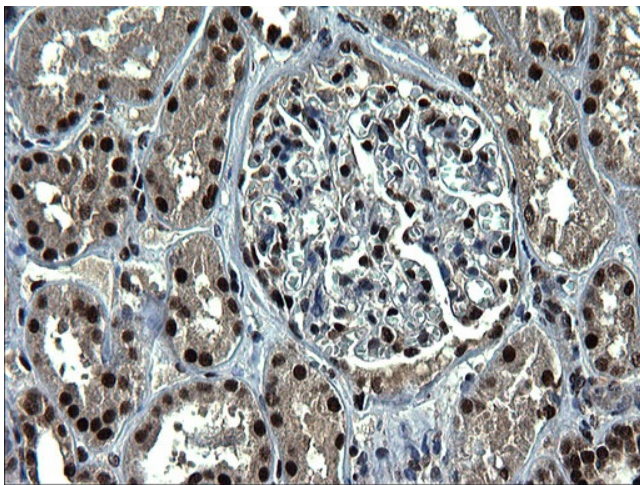
HEK293T cells were transfected with the pCMV6-ENTRY control (Cat# [PS100001], Left lane) or pCMV6-ENTRY RPRD1B (Cat# [RC207481], Right lane) cDNA for 48 hrs and lysed. Equivalent amounts of cell lysates (5 ug per lane) were separated by SDS-PAGE and immunoblotted with anti-RPRD1B (Cat# [TA507369]). Positive lysates [LY412017] (100ug) and [LC412017] (20ug) can be purchased separately from OriGene.



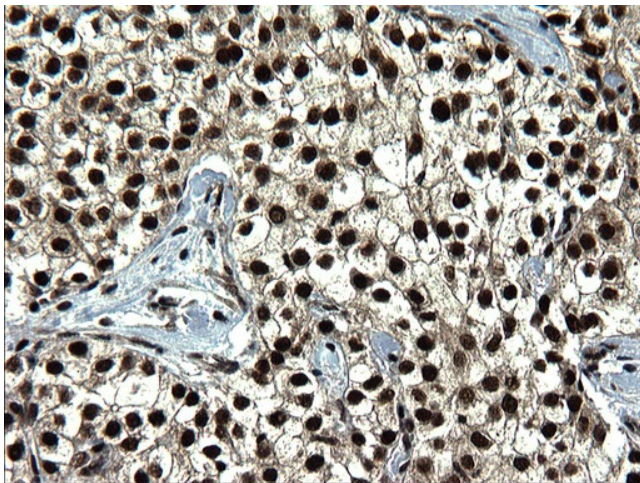
Immunohistochemical staining of paraffin-embedded Human colon tissue within the normal limits using anti-RPRD1B mouse monoclonal antibody. (Heat-induced epitope retrieval by 1mM EDTA in 10mM Tris, pH8.5, 120°C for 3min, [TA507369])



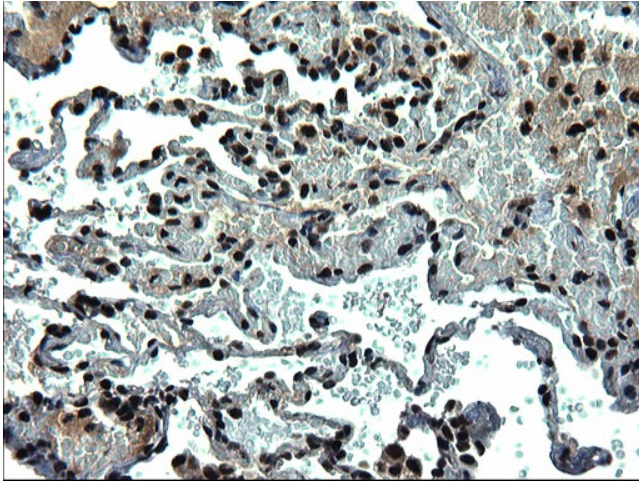
Immunohistochemical staining of paraffin-embedded Adenocarcinoma of Human colon tissue using anti-RPRD1B mouse monoclonal antibody. (Heat-induced epitope retrieval by 1mM EDTA in 10mM Tris, pH8.5, 120°C for 3min, [TA507369])



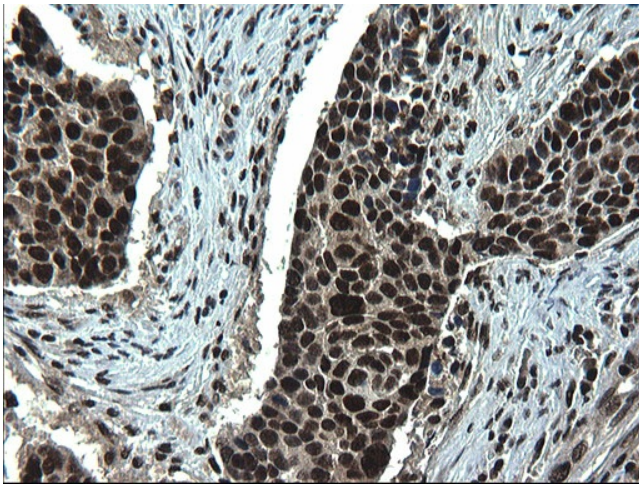
Immunohistochemical staining of paraffin-embedded Human Kidney tissue within the normal limits using anti-RPRD1B mouse monoclonal antibody. (Heat-induced epitope retrieval by 1mM EDTA in 10mM Tris, pH8.5, 120°C for 3min, [TA507369])



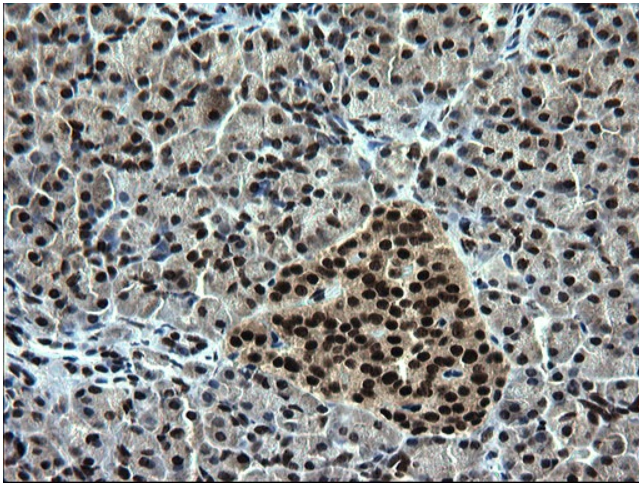
Immunohistochemical staining of paraffin-embedded Carcinoma of Human liver tissue using anti-RPRD1B mouse monoclonal antibody. (Heat-induced epitope retrieval by 1mM EDTA in 10mM Tris, pH8.5, 120°C for 3min, [TA507369])



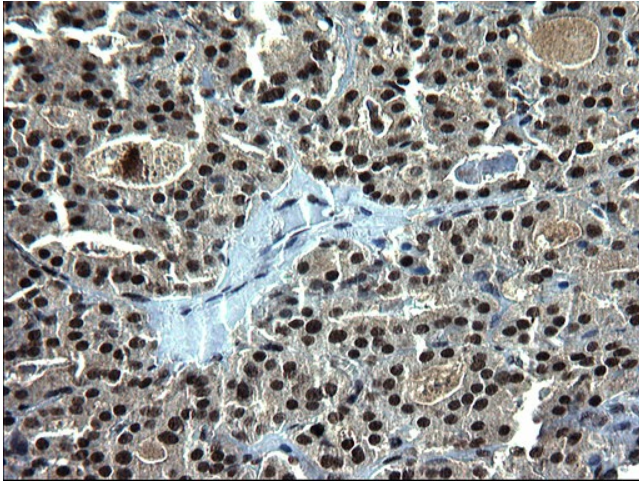
Immunohistochemical staining of paraffin-embedded Human lung tissue within the normal limits using anti-RPRD1B mouse monoclonal antibody. (Heat-induced epitope retrieval by 1mM EDTA in 10mM Tris, pH8.5, 120°C for 3min, [TA507369])



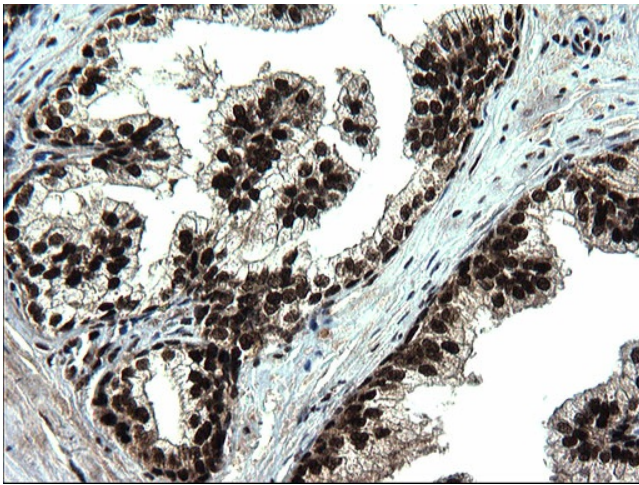
Immunohistochemical staining of paraffin-embedded Carcinoma of Human lung tissue using anti-RPRD1B mouse monoclonal antibody. (Heat-induced epitope retrieval by 1mM EDTA in 10mM Tris, pH8.5, 120°C for 3min, [TA507369])



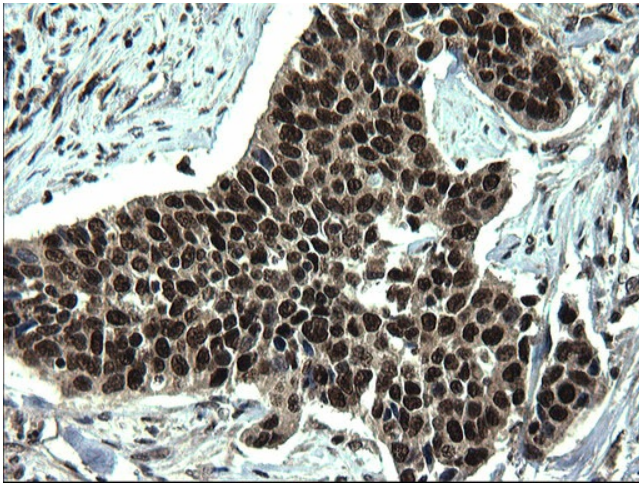
Immunohistochemical staining of paraffin-embedded Human pancreas tissue within the normal limits using anti-RPRD1B mouse monoclonal antibody. (Heat-induced epitope retrieval by 1mM EDTA in 10mM Tris, pH8.5, 120°C for 3min, [TA507369])



Immunohistochemical staining of paraffin-embedded Human thyroid tissue within the normal limits using anti-RPRD1B mouse monoclonal antibody. (Heat-induced epitope retrieval by 1mM EDTA in 10mM Tris, pH8.5, 120°C for 3min, [TA507369])



Immunohistochemical staining of paraffin-embedded Human prostate tissue within the normal limits using anti-RPRD1B mouse monoclonal antibody. (Heat-induced epitope retrieval by 1mM EDTA in 10mM Tris, pH8.5, 120°C for 3min, [TA507369])



Immunohistochemical staining of paraffin-embedded Carcinoma of Human bladder tissue using anti-RPRD1B mouse monoclonal antibody. (Heat-induced epitope retrieval by 1mM EDTA in 10mM Tris, pH8.5, 120°C for 3min, [TA507369])



Immunohistochemical staining of paraffin-embedded Human lymph node tissue within the normal limits using anti-RPRD1B mouse monoclonal antibody. (Heat-induced epitope retrieval by 1mM EDTA in 10mM Tris, pH8.5, 120°C for 3min, [TA507369])