

## Product datasheet for **TA507325AM**

### **C12orf26 (METTL25) Mouse Monoclonal Antibody (Biotin conjugated) [Clone ID: OTI1B1]**

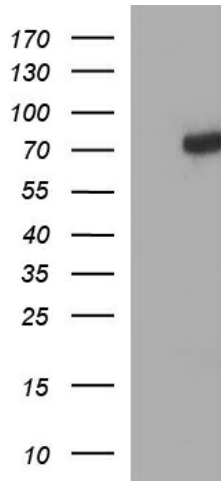
#### **Product data:**

Product Type:	Primary Antibodies
Clone Name:	OTI1B1
Applications:	IHC, WB
Recommended Dilution:	WB 1:4000, IHC 1:150
Reactivity:	Human
Host:	Mouse
Isotype:	IgG1
Clonality:	Monoclonal
Immunogen:	Full length human recombinant protein of human C12orf26(NP_115606) produced in HEK293T cell.
Formulation:	PBS (pH 7.3) containing 1% BSA, 50% glycerol and 0.02% sodium azide.
Concentration:	0.5 mg/ml
Purification:	Purified from mouse ascites fluids or tissue culture supernatant by affinity chromatography (protein A/G)
Conjugation:	Biotin
Storage:	Store at -20°C as received.
Stability:	Stable for 12 months from date of receipt.
Predicted Protein Size:	68 kDa
Gene Name:	methyltransferase like 25
Database Link:	<a href="#">NP_115606</a> <a href="#">Entrez Gene 84190 Human</a> <a href="#">Q8N6Q8</a>
Synonyms:	C12orf26

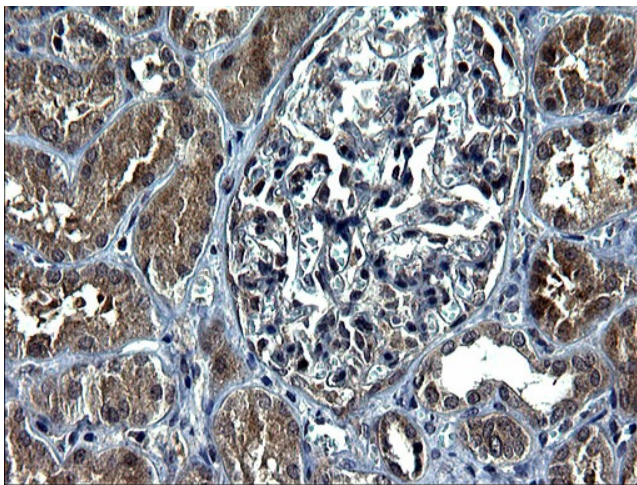


[View online »](#)

## Product images:



HEK293T cells were transfected with the pCMV6-ENTRY control (Left lane) or pCMV6-ENTRY C12orf26 ([RC206658], Right lane) cDNA for 48 hrs and lysed. Equivalent amounts of cell lysates (5 ug per lane) were separated by SDS-PAGE and immunoblotted with anti-C12orf26. Positive lysates [LY410257] (100ug) and [LC410257] (20ug) can be purchased separately from OriGene.



Immunohistochemical staining of paraffin-embedded Human Kidney tissue within the normal limits using anti-C12orf26 mouse monoclonal antibody. Heat-induced epitope retrieval by EDTA solution buffer pH 8.0 at 120°C for 3 min.