

## Product datasheet for **TA507320S**

### SIRP alpha (SIRPA) Mouse Monoclonal Antibody [Clone ID: OT11H1]

#### Product data:

Product Type:	Primary Antibodies
Clone Name:	OT11H1
Applications:	FC, WB
Recommended Dilution:	WB 1:4000
Reactivity:	Human
Host:	Mouse
Isotype:	IgG2a
Clonality:	Monoclonal
Immunogen:	Full length human recombinant protein of human SIRPA(NP_001035111) produced in HEK293T cell.
Formulation:	PBS (pH 7.3) containing 1% BSA, 50% glycerol and 0.02% sodium azide.
Concentration:	1 mg/ml
Purification:	Purified from mouse ascites fluids or tissue culture supernatant by affinity chromatography (protein A/G)
Conjugation:	Unconjugated
Storage:	Store at -20°C as received.
Stability:	Stable for 12 months from date of receipt.
Predicted Protein Size:	52.3 kDa
Gene Name:	signal regulatory protein alpha
Database Link:	<a href="#">NP_001035111</a> <a href="#">Entrez Gene 140885 Human</a> <a href="#">P78324</a>



[View online »](#)

**Background:**

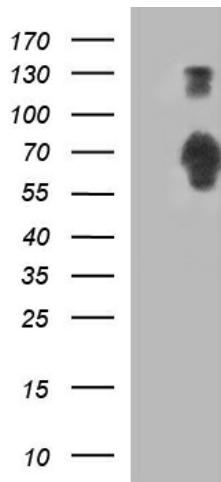
The protein encoded by this gene is a member of the signal-regulatory-protein (SIRP) family, and also belongs to the immunoglobulin superfamily. SIRP family members are receptor-type transmembrane glycoproteins known to be involved in the negative regulation of receptor tyrosine kinase-coupled signaling processes. This protein can be phosphorylated by tyrosine kinases. The phospho-tyrosine residues of this PTP have been shown to recruit SH2 domain containing tyrosine phosphatases (PTP), and serve as substrates of PTPs. This protein was found to participate in signal transduction mediated by various growth factor receptors. CD47 has been demonstrated to be a ligand for this receptor protein. This gene and its product share very high similarity with several other members of the SIRP family. These related genes are located in close proximity to each other on chromosome 20p13. Multiple alternatively spliced transcript variants have been determined for this gene. [provided by RefSeq, Jul 2008]

**Synonyms:**

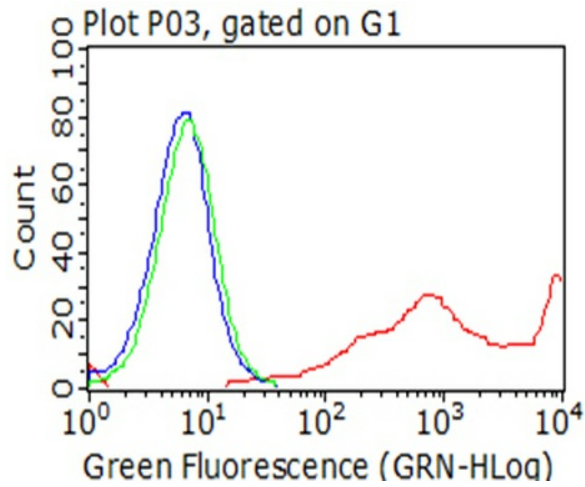
BIT; CD172A; MFR; MYD-1; P84; PTPNS1; SHPS1; SIRP

**Protein Families:**

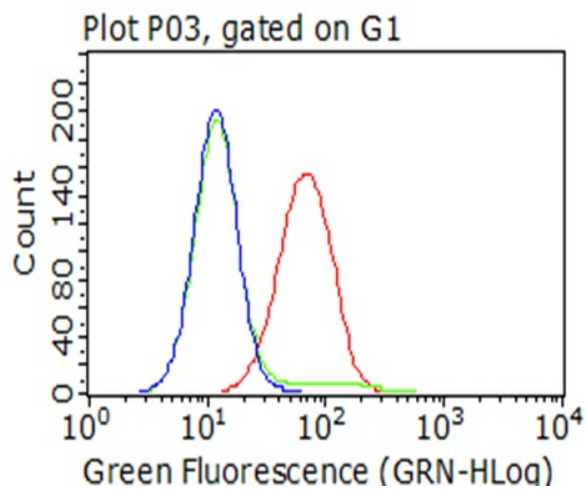
Druggable Genome, Phosphatase, Transmembrane

**Product images:**

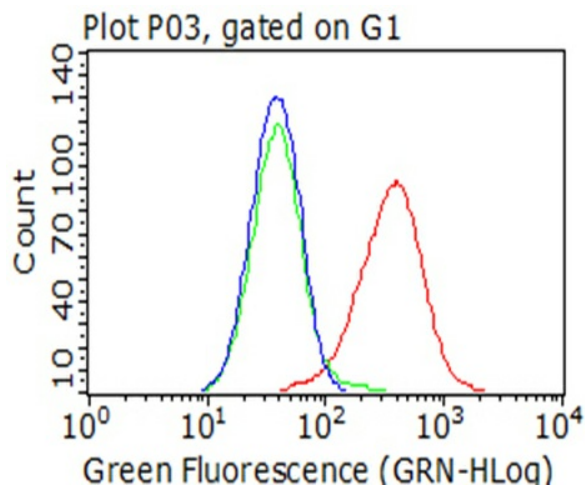
HEK293T cells were transfected with the pCMV6-ENTRY control (Left lane) or pCMV6-ENTRY SIRPA ([RC222380], Right lane) cDNA for 48 hrs and lysed. Equivalent amounts of cell lysates (5 ug per lane) were separated by SDS-PAGE and immunoblotted with anti-SIRPA. Positive lysates [LY421878] (100ug) and [LC421878] (20ug) can be purchased separately from OriGene.



Flow cytometric analysis of living 293T cells transfected with SIRPA overexpression plasmid ([RC222380]), Red)/empty vector ([PS100001], Blue) using anti-SIRPA antibody ([TA507320]). Cells incubated with a non-specific antibody (Green) were used as isotype control (1:100).



Flow cytometric analysis of living A375 cells, using anti-SIRPA antibody ([TA507320], Red), compared to an isotype control (green), and a PBS control (blue) (1:100).



Flow cytometric analysis of living SK-MEL-28 cells, using anti-SIRPA antibody ([TA507320], Red), compared to an isotype control (green), and a PBS control (blue) (1:100).