

## Product datasheet for **TA507305**

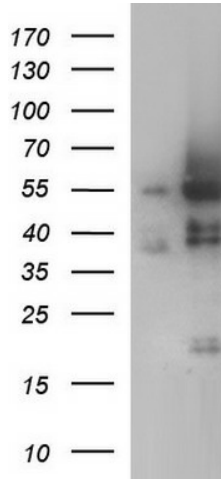
### ANKMY2 Mouse Monoclonal Antibody [Clone ID: OTI1F11]

#### Product data:

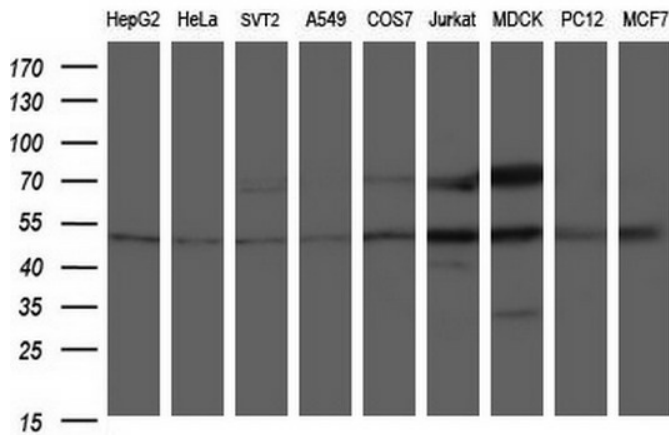
Product Type:	Primary Antibodies
Clone Name:	OTI1F11
Applications:	IHC, WB
Recommended Dilution:	WB 1:400~4000, IHC 1:150
Reactivity:	Human, Dog, Rat, Monkey, Mouse
Host:	Mouse
Isotype:	IgG1
Clonality:	Monoclonal
Immunogen:	Full length human recombinant protein of human ANKMY2(NP_064715) produced in HEK293T cell.
Formulation:	PBS (pH 7.3) containing 1% BSA, 50% glycerol and 0.02% sodium azide.
Concentration:	1 mg/ml
Purification:	Purified from mouse ascites fluids or tissue culture supernatant by affinity chromatography (protein A/G)
Conjugation:	Unconjugated
Storage:	Store at -20°C as received.
Stability:	Stable for 12 months from date of receipt.
Predicted Protein Size:	49.1 kDa
Gene Name:	ankyrin repeat and MYND domain containing 2
Database Link:	<a href="#">NP_064715</a> <a href="#">Entrez Gene 217473</a> <a href="#">MouseEntrez Gene 314046</a> <a href="#">RatEntrez Gene 100856722</a> <a href="#">DogEntrez Gene 709414</a> <a href="#">MonkeyEntrez Gene 57037</a> <a href="#">Human Q8IV38</a>
Synonyms:	ZMYND20



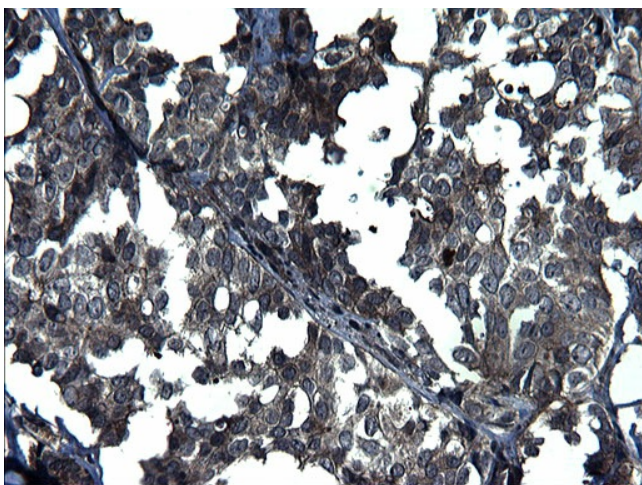
[View online »](#)

**Product images:**


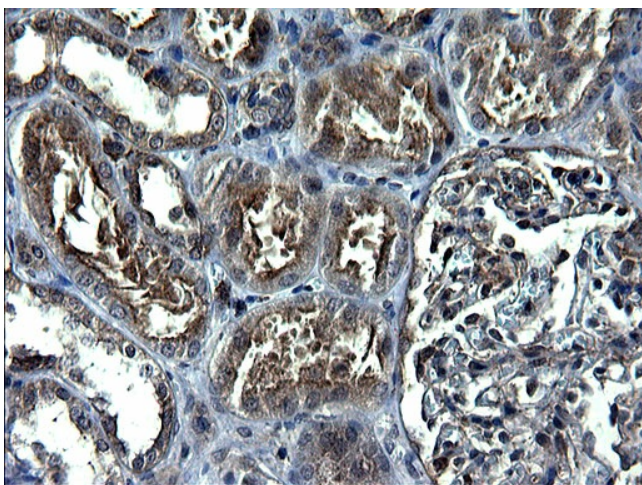
HEK293T cells were transfected with the pCMV6-ENTRY control (Cat# [PS100001], Left lane) or pCMV6-ENTRY ANKMY2 (Cat# [RC206770], Right lane) cDNA for 48 hrs and lysed. Equivalent amounts of cell lysates (5 ug per lane) were separated by SDS-PAGE and immunoblotted with anti-ANKMY2(Cat# TA507305). Positive lysates [LY412559] (100ug) and [LC412559] (20ug) can be purchased separately from OriGene.



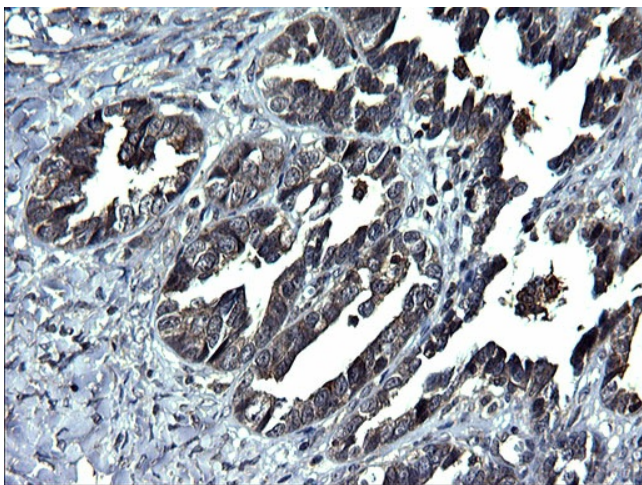
Western blot analysis of extracts (35ug) from 9 different cell lines by using anti-ANKMY2 monoclonal antibody (HepG2: human; HeLa: human; SVT2: mouse; A549: human; COS7: monkey; Jurkat: human; MDCK: canine; PC12: rat; MCF7: human).



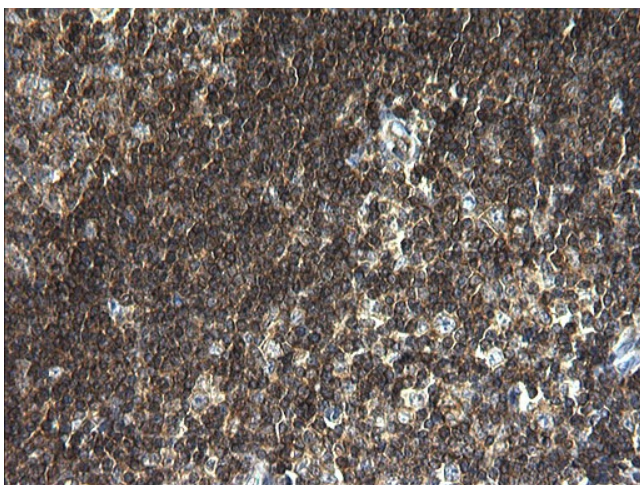
Immunohistochemical staining of paraffin-embedded Adenocarcinoma of Human breast tissue using anti-ANKMY2 mouse monoclonal antibody. (Heat-induced epitope retrieval by 1mM EDTA in 10mM Tris, pH8.5, 120°C for 3min, TA507305)



Immunohistochemical staining of paraffin-embedded Human Kidney tissue within the normal limits using anti-ANKMY2 mouse monoclonal antibody. (Heat-induced epitope retrieval by 1mM EDTA in 10mM Tris, pH8.5, 120°C for 3min, TA507305)



Immunohistochemical staining of paraffin-embedded Adenocarcinoma of Human ovary tissue using anti-ANKMY2 mouse monoclonal antibody. (Heat-induced epitope retrieval by 1mM EDTA in 10mM Tris, pH8.5, 120°C for 3min, TA507305)



Immunohistochemical staining of paraffin-embedded Human lymph node tissue within the normal limits using anti-ANKMY2 mouse monoclonal antibody. (Heat-induced epitope retrieval by 1mM EDTA in 10mM Tris, pH8.5, 120°C for 3min, TA507305)