

Product datasheet for **TA507302**

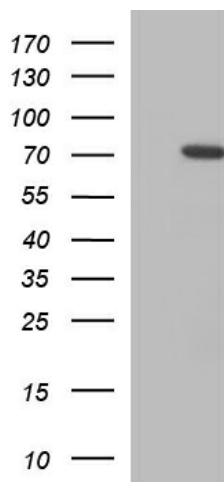
C12orf26 (METTL25) Mouse Monoclonal Antibody [Clone ID: OT1E2]

Product data:

Product Type:	Primary Antibodies
Clone Name:	OT1E2
Applications:	WB
Recommended Dilution:	WB 1:4000
Reactivity:	Human
Host:	Mouse
Isotype:	IgG1
Clonality:	Monoclonal
Immunogen:	Full length human recombinant protein of human C12orf26(NP_115606) produced in HEK293T cell.
Formulation:	PBS (pH 7.3) containing 1% BSA, 50% glycerol and 0.02% sodium azide.
Concentration:	1 mg/ml
Purification:	Purified from mouse ascites fluids or tissue culture supernatant by affinity chromatography (protein A/G)
Conjugation:	Unconjugated
Storage:	Store at -20°C as received.
Stability:	Stable for 12 months from date of receipt.
Predicted Protein Size:	68 kDa
Gene Name:	methyltransferase like 25
Database Link:	NP_115606 Entrez Gene 84190 Human Q8N6Q8
Synonyms:	C12orf26



[View online »](#)

Product images:

HEK293T cells were transfected with the pCMV6-ENTRY control (Left lane) or pCMV6-ENTRY C12orf26 ([RC206658], Right lane) cDNA for 48 hrs and lysed. Equivalent amounts of cell lysates (5 ug per lane) were separated by SDS-PAGE and immunoblotted with anti-C12orf26. Positive lysates [LY410257] (100ug) and [LC410257] (20ug) can be purchased separately from OriGene.