

Product datasheet for **TA507286S**

Albumin (ALB) Mouse Monoclonal Antibody [Clone ID: OTI3B10]

Product data:

Product Type:	Primary Antibodies
Clone Name:	OTI3B10
Applications:	WB
Recommended Dilution:	WB 1:2000
Reactivity:	Human
Host:	Mouse
Isotype:	IgG1
Clonality:	Monoclonal
Immunogen:	Human recombinant protein fragment corresponding to amino acids 19-609 of human ALB (NP_000468) produced in E.coli.
Formulation:	PBS (pH 7.3) containing 1% BSA, 50% glycerol and 0.02% sodium azide.
Concentration:	1 mg/ml
Purification:	Purified from mouse ascites fluids or tissue culture supernatant by affinity chromatography (protein A/G)
Conjugation:	Unconjugated
Storage:	Store at -20°C as received.
Stability:	Stable for 12 months from date of receipt.
Predicted Protein Size:	67.2 kDa
Gene Name:	albumin
Database Link:	NP_000468 Entrez Gene 213 Human P02768



[View online »](#)

Background:

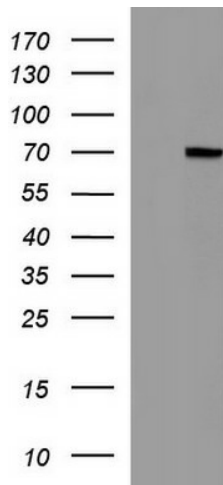
Albumin is a soluble, monomeric protein which comprises about one-half of the blood serum protein. Albumin functions primarily as a carrier protein for steroids, fatty acids, and thyroid hormones and plays a role in stabilizing extracellular fluid volume. Albumin is a globular unglycosylated serum protein of molecular weight 65,000. Albumin is synthesized in the liver as prealbumin which has an N-terminal peptide that is removed before the nascent protein is released from the rough endoplasmic reticulum. The product, proalbumin, is in turn cleaved in the Golgi vesicles to produce the secreted albumin. [provided by RefSeq, Jul

Synonyms:

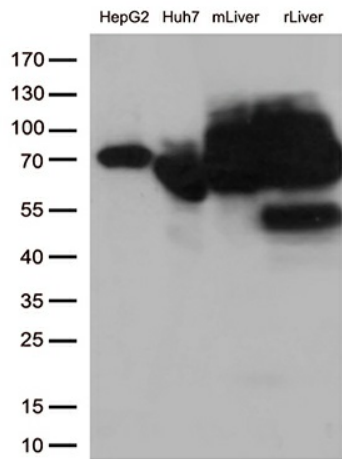
FDAHT; HSA; PRO0883; PRO0903; PRO1341

Protein Families:

Secreted Protein

Product images:


HEK293T cells were transfected with the pCMV6-ENTRY control (Left lane) or pCMV6-ENTRY ALB ([RC205943], Right lane) cDNA for 48 hrs and lysed. Equivalent amounts of cell lysates (5 ug per lane) were separated by SDS-PAGE and immunoblotted with anti-ALB (1:2000).



Western blot analysis of extracts (35ug) from 2 cell lines and 2 tissues lysates by using anti-ALB monoclonal antibody (1:1000).