

Product datasheet for **TA507282M**

GGA2 Mouse Monoclonal Antibody [Clone ID: OTI1D2]

Product data:

Product Type:	Primary Antibodies
Clone Name:	OTI1D2
Applications:	WB
Recommended Dilution:	WB 1:4000
Reactivity:	Human, Mouse, Rat
Host:	Mouse
Isotype:	IgG2b
Clonality:	Monoclonal
Immunogen:	Full length human recombinant protein of human GGA2(NP_055859) produced in HEK293T cell
Formulation:	PBS (pH 7.3) containing 1% BSA, 50% glycerol and 0.02% sodium azide.
Concentration:	1 mg/ml
Purification:	Purified from mouse ascites fluids or tissue culture supernatant by affinity chromatography (protein A/G)
Conjugation:	Unconjugated
Storage:	Store at -20°C as received.
Stability:	Stable for 12 months from date of receipt.
Predicted Protein Size:	67 kDa
Gene Name:	golgi associated, gamma adaptin ear containing, ARF binding protein 2
Database Link:	NP_055859 Entrez Gene 74105 Mouse Entrez Gene 293455 Rat Entrez Gene 23062 Human Q9UJY4



[View online »](#)

Background:

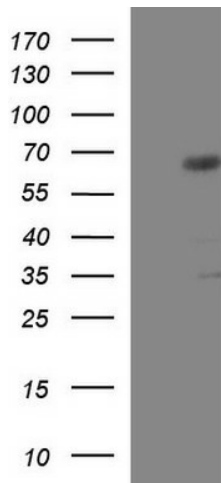
This gene encodes a member of the Golgi-localized, gamma adaptin ear-containing, ARF-binding (GGA) family. This family includes ubiquitous coat proteins that regulate the trafficking of proteins between the trans-Golgi network and the lysosome. These proteins share an amino-terminal VHS domain which mediates sorting of the mannose 6-phosphate receptors at the trans-Golgi network. They also contain a carboxy-terminal region with homology to the ear domain of gamma-adaptins. This family member may play a significant role in cargo molecules regulation and clathrin-coated vesicle assembly. [provided by RefSeq, Jul 2008]

Synonyms:

VEAR

Protein Pathways:

Lysosome

Product images:


HEK293T cells were transfected with the pCMV6-ENTRY control (Cat# [PS100001], Left lane) or pCMV6-ENTRY GGA2 (Cat# [RC200153], Right lane) cDNA for 48 hrs and lysed. Equivalent amounts of cell lysates (5 ug per lane) were separated by SDS-PAGE and immunoblotted with anti-GGA2 (Cat# [TA507282]). Positive lysates [LY414846] (100ug) and [LC414846] (20ug) can be purchased separately from OriGene.